

Rotating bent lever

New

GT64
AC161

Common applications

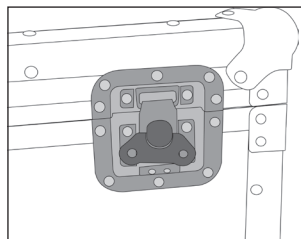
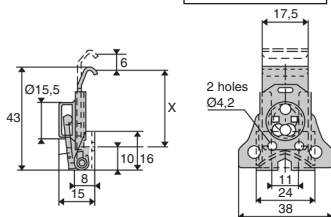
- Closure by eccentric cam by turning the butterfly nut
- Automatic return of the butterfly nut by a spring system.
- Model designed to be hung in a recess (use of an **AC161 hook** is possible but not essential)
- Good tensile strength.
- Easy to operate
- Smaller footprint
- In the open position, the unit folds down completely.
- Very high safety against accidental opening (e.g. during vibration).
- Allows for seamless use and greater flexibility in positioning tolerances.
- Material:

White galvanised steel or stainless steel

Info

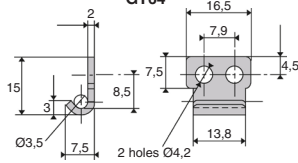
- The approximate fitting size: $X = 32,7$ mm for a tension of about 60 daN.
- Usable hook: **AC161**

NEW!



Application example

GT64



AC161

DISCOUNTS

Qty	1+	10+	20+	50+
Disc. Price	-	-3%	-5%	On request

Part number	Material	Thickness latching tab	Thickness retaining bracket	Max. Stroke	Max. tension (daN)	Weight (g)	Price each 1 to 9
Bent lever							
GT64-ZB	White galvanised steel	15/10è	12/10è	6	80	39	8,12 €
GT64-SS	Rough 303 stainless steel	15/10è	12/10è	6	80	39	10,12 €
Hook							
AC161-ZB	White galvanised steel	15/10è	12/10è	-	-	3,7	0,29 €
AC161-SS	Rough 303 stainless steel	15/10è	12/10è	-	-	3,7	0,39 €

Dimensions in mm

New

Rotating bent lever with spring

Increased fitting tolerances

GT64R AC161

- Closure by eccentric cam by turning the butterfly nut
- Automatic return of the butterfly nut by a spring system.
- Model designed to be hung in a recess (use of an AC161 hook is possible but not essential)
- Good tensile strength.
- Easy to operate
- Smaller footprint
- In the open position, the unit folds down completely.
- Lead sealing option
- Very high safety against accidental opening (e.g. during vibration).
- Allows for seamless use and greater flexibility in positioning tolerances.
- Material:

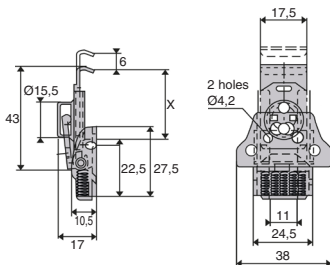
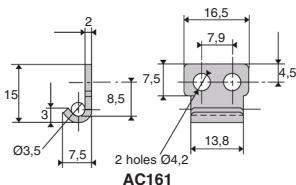
White galvanised steel or stainless steel

Advantage

- Compensation for tolerances on fitting sizes by 4 springs.

Info

- The approximate fitting size: $X = 31,4 \text{ mm}$ for a tension of about 60 daN.
- Usable hook: **AC161**

**GT64R****AC161**

DISCOUNTS

Qty	1+	10+	20+	50+
Disc.	Price	-3%	-5%	On request

Part number	Material	Thickness latching tab	Thickness retaining bracket	Stroke	Max. tension (daN)	Weight (g)	Price each 1 to 9
Bent lever							
GT64R-ZB	White galvanised steel	15/10è	20/10è	6	80	39	10,93 €
GT64R-SS	Rough 303 stainless steel	15/10è	20/10è	6	80	39	13,27 €
Hook							
AC161-ZB	White galvanised steel	15/10è	20/10è	-	-	3,7	0,29 €
AC161-SS	Rough 303 stainless steel	15/10è	20/10è	-	-	3,7	0,39 €

Dimensions in mm

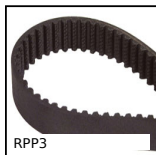
Fax: 0 825 88 6000 Service 0,15€/mln + prix appel

cial2@hpceurope.com

WEB
04/2021

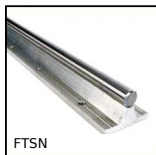
HPC

Our other products



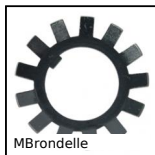
RPP3

RPP heavy duty timing belt, RPP3



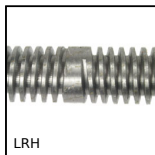
FTSN

Supported shaft for linear guide, Steel shaft / Aluminium support



MBrondelle

Stop washer, Stop washer MB



LRH

Bi-directional leadscrew, Bi-directional - 1 thread



D19 D29

Compression springs in metre length steel, by the metre



SSDB

Stainless steel bevel gear, 2:1



TCSH

Automatic chain tensioner, With support



SSB

Stainless steel bevel gear, 1:1



PLM-20SC

Threaded cylindrical magnet, With



CM

Tools Hygienic Usit® and Hygienic



ZBconique

Machined plastic bevel gear , 1:1



G1

Steel spur gear, Steel 20NCD2

Complementary products



gt64

Rotating bent lever, Common applications