

# Rotating bent lever

New

GT64  
AC161

Common applications

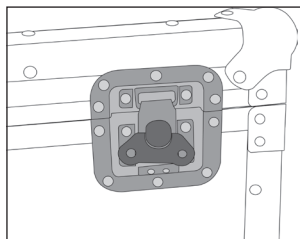
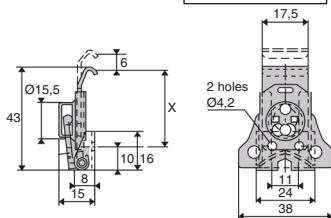
- Closure by eccentric cam by turning the butterfly nut
- Automatic return of the butterfly nut by a spring system.
- Model designed to be hung in a recess (use of an **AC161 hook** is possible but not essential)
- Good tensile strength.
- Easy to operate
- Smaller footprint
- In the open position, the unit folds down completely.
- Very high safety against accidental opening (e.g. during vibration).
- Allows for seamless use and greater flexibility in positioning tolerances.
- Material:

White galvanised steel or stainless steel

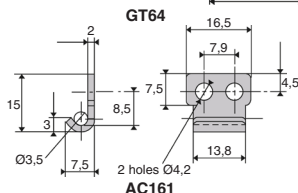
## Info

- The approximate fitting size:  $X = 32,7 \text{ mm}$  for a tension of about 60 daN.
- Usable hook: **AC161**

NEW!



Application example



## DISCOUNTS

Qty	1+	10+	20+	50+
Disc. Price		-3%	-5%	On request

Part number	Material	Thickness latching tab	Thickness retaining bracket	Stroke	Max. tension (daN)	Weight (g)	Price each 1 to 9
<b>Bent lever</b>							
GT64-ZB	White galvanised steel	15/10è	12/10è	6	80	39	8,12 €
GT64-SS	Rough 303 stainless steel	15/10è	12/10è	6	80	39	10,12 €
<b>Hook</b>							
AC161-ZB	White galvanised steel	15/10è	12/10è	-	-	3,7	0,29 €
AC161-SS	Rough 303 stainless steel	15/10è	12/10è	-	-	3,7	0,39 €

Dimensions in mm

HPC

WEB  
04/2021

www.hpceurope.com

Tél: 0 825 88 5000 Service 0,15 €/min + prix appel

## Increased fitting tolerances

## GT64R AC161

- Closure by eccentric cam by turning the butterfly nut
- Automatic return of the butterfly nut by a spring system.
- Model designed to be hung in a recess (use of an AC161 hook is possible but not essential)
- Good tensile strength.
- Easy to operate
- Smaller footprint
- In the open position, the unit folds down completely.
- Lead sealing option
- Very high safety against accidental opening (e.g. during vibration).
- Allows for seamless use and greater flexibility in positioning tolerances.
- Material:

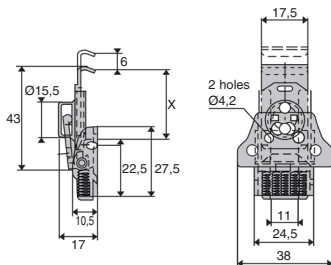
White galvanised steel or stainless steel

### Advantage

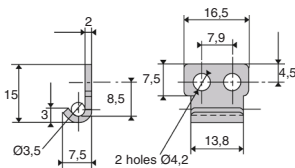
- Compensation for tolerances on fitting sizes by 4 springs.

### Info

- The approximate fitting size:  $X = 31,4 \text{ mm}$  for a tension of about 60 daN.
- Usable hook: **AC161**



GT64R



AC161

### DISCOUNTS

Qty	1+	10+	20+	50+
Disc.	Price	-3%	-5%	On request

Part number	Material	Thickness latching tab	Thickness retaining bracket	Stroke	Max. tension (daN)	Weight (g)	Price each 1 to 9
<b>Bent lever</b>							
GT64R-ZB	White galvanised steel	15/10è	20/10è	6	80	39	10,93 €
GT64R-SS	Rough 303 stainless steel	15/10è	20/10è	6	80	39	13,27 €
<b>Hook</b>							
AC161-ZB	White galvanised steel	15/10è	20/10è	-	-	3,7	0,29 €
AC161-SS	Rough 303 stainless steel	15/10è	20/10è	-	-	3,7	0,39 €

Dimensions in mm

## Our other products



GPLbr

Brush, brass



VELM6

Screw-on base for  
hook-and-loop strip,  
Polyamide



H2

Crossed helical gear  
crossed axis at 90°,  
Steel 20NCD2



G-ECO

Eco range Spur gear,  
Steel C45



STRIP1000

Sealing brush strip,  
1m length



PTAF80-PAMF80

Articulated fixable  
foot with pressed  
base Ø80, Ø 80



TK

Topball self-aligning  
linear bearing, Topball  
self-aligning



E50

Right angle helical  
reducers, from 3 to 41  
Nm



RTK

BoWex® curved tooth  
gear coupling, Nylon



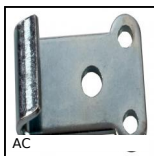
SFE

Female rod ends,  
Stainless steel / PTFE



PSG08

Spur gear - precision  
range, Case hardened



AC

Strike for toggle latch,  
15mm

## Complementary products



gt64r

Rotating bent lever  
with spring, Increased  
fitting tolerances