



DryLin® W slide assembly

Size 20

WW20

A **WW20** slide assembly comprises:

- 1 mounting assembly plate
- 4 WJUM01-20 bearing blocks

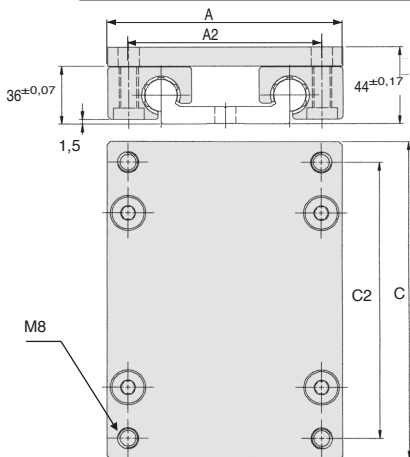
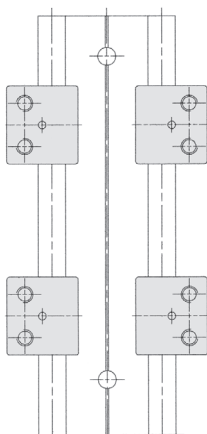
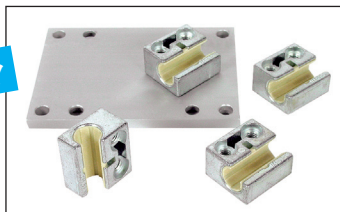
Advantages

- Low profile design

Accessories

- **WS20-80** rails

Modular



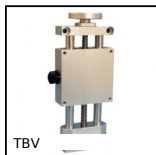
DISCOUNTS

Qty	1+	5+	10+	15+	20+
Disc.	List	-10%	-15%	-20%	On request

Part number	A	C	A2	C2	Max. static load (20°C)					Weight (kg)	Stock*	Price each 1 to 4
					Coy (N)	Coz (N)	Mox (N)	Moy (Nm)	Moz (Nm)			
WW20-80-15	134	150	116	132	12800	12800	525	670	670	1,20	✓	124,34 €
WW20-80-20	134	200	116	182	12800	12800	525	990	990	1,30	-	133,54 €
WW20-80-25	134	250	116	232	12800	12800	525	1250	1250	1,50	-	142,04 €

*Depending on availability - Dimensions in mm

Our other products



TBV

Manual lifting tables,
3kg



BVR

Adjustable screw stop,
Steel



SUA4

Single chain supplied
by the metre, Steel



GLB

Small 6 lobe threaded
handle - female,
Technopolymer -
Brass



PGR

Folding revolving
handle for handwheel,
Folding



AZY

Cylindrical elasto
mount, Steel



CLR

Straight clevis,
Straight clevis for use
with a male clevis



BMM

Knurled knob - male,
Knurled



BCTH

Mushroom headed
button Hygienic
Usit®, With female



WS16

Drylin® W rail, Rail



T5M T10M

T type timing belt per
metre, T10 Steel
cored polyurethane



PRF_BASE

Base plate for
aluminium profile,
Base plate

Complementary products



WJUM20

Drylin® W bearing
block, Slide



WS20

Drylin® W rail, Rail