

# DryLin® W slide assembly



## WW16

## Size 16

A **WW16** slide assembly comprises:

- 1 mounting assembly plate
- 4 WJUM01-16 bearing block

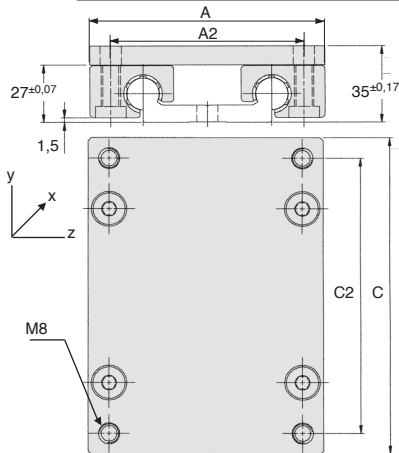
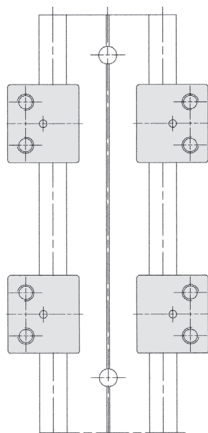
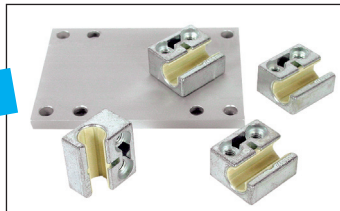
### Advantage

- Low profile design

### Accessories

- **WS10-40** and **WS10-80** rails

**Modular**



### DISCOUNTS

Qty	1+	5+	10+	15+	20+
Disc.	List	-10%	-15%	-20%	On request

Part number	A	C	A2	C2	Max. static load (20°C)					Weight (kg)	Price each 1 to 4	
					Coy (N)	Coz (N)	Mox (N)	Moy (Nm)	Moz (Nm)			
WW16-60-10	104	100	86	82	8400	8400	240	270	270	0,71	-	119,58 €
WW16-60-15	104	150	86	132	8400	8400	240	480	480	0,84	-	130,89 €
WW16-60-20	104	200	86	182	8400	8400	240	690	690	0,97	-	144,26 €

\*Depending on availability - Dimensions in mm

**HPC**

WEB  
04/2020

www.hpceurope.com

Tél: 0 825 88 5000 Service 0,15 €/min + prix appel

## Our other products



BHEX

Hexagonal cap, Black technopolymer



ZG2

Plastic spur gear, Machined plastic (delrin)



PM3

Worm and wheel set, Non hardened steel



PPS

Lifting ring, Universal threaded



NCT

Square tube connector, Fixed angle



TK

Topball self-aligning linear bearing, Topball self-aligning



PR40

Articulated foot Ø50, Ø 50



BLHM40

Right angled gearbox, double output shafts, up to 10.3 Nm



DBL821

Idler for slat top chain, Range 821



SHWbr

Washer - DIN125, Brass



ACM\_AZ

Mounting bracket for bonnet fastener, Hook



GBMz

Cylindrical ballscrew nut, Cylindrical nut - Multiple starts

## Complementary products



WJUM16

Drylin® W bearing block, Slide



WS16

Drylin® W rail, Rail