



DryLin®W slide assembly

Size 10

WW10

- A **WW10** slide comprises:
- 1 mounting assembly plate
 - 4 WJUM01-10 bearing block

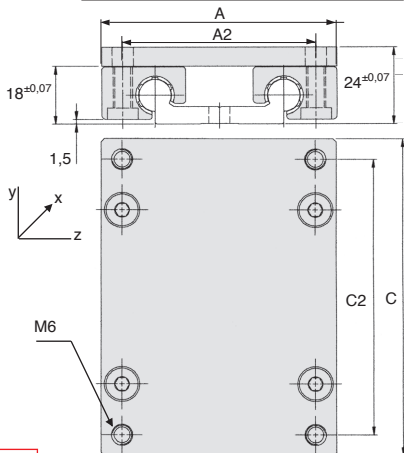
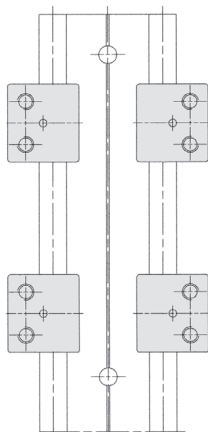
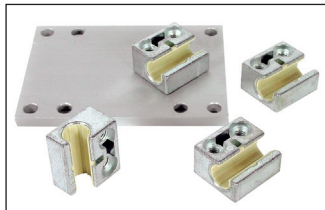
Advantages

- Low profile design

Accessories

- **WS10-40** and **WS10-80** rails

Modular



DISCOUNTS

Qty	1+	5+	10+	15+	20+
Disc.	List	-10%	-15%	-20%	On request

Part number	A	C	A2	C2	Max. static load (20°C)					Weight (kg)	Stock*	Price each 1 to 4
					Coy (N)	Coz (N)	Mox (N)	Moy (Nm)	Moz (Nm)			
WW10-40-10	73	100	60	87	4800	4800	96	170	170	0,29	✓	88,35 €
WW10-40-15	73	150	60	137	4800	4800	96	290	290	0,34	✓	93,42 €
WW10-40-20	73	200	60	187	4800	4800	96	410	410	0,40	✓	98,85 €
WW10-80-10	107	100	94	87	4800	4800	178	170	170	0,34	✓	94,48 €
WW10-80-15	107	150	94	137	4800	4800	178	290	290	0,42	✓	101,00 €
WW10-80-20	107	200	94	187	4800	4800	178	410	410	0,50	✓	111,65 €

*Depending on availability - Dimensions in mm

Our other products



COA-COG

Surface mounting plate, Surface mounting plate for clevis



NTM

Nylon tipped set screw, Nylon-point



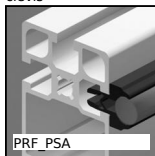
LVT

Miniature motorised actuator 4A, 4 amperes



DOG316

Motor-gearbox 12V and 24V DC, from 1.5 to 2 Nm



PRF PSA

Shaft support for aluminium profile, Shaft support



PSG2

Spur gear - precision range, Case hardened steel 20NCD2



NT62

Spur gear coaxial gearbox, from 6 to 18 Nm - Inline



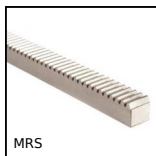
UGPC

Actuator guide kit, Short bearing



PSG15S

Spur gear - precision range, Stainless steel 303



MRS

Stainless steel metric section rack, Stainless steel



BABS303

303 Stainless steel compact ball pin, Stainless steel 303



T5-16ECO

T type timing pulley, Economy range - T5 aluminium

Complementary products



WJUM10

Drylin® W bearing block, Slide



WS10

Drylin® W rail, Rail