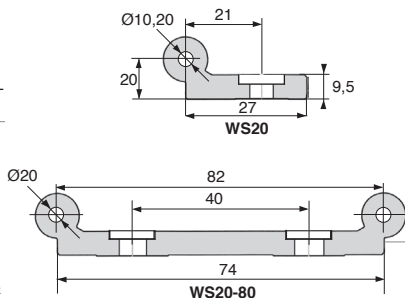
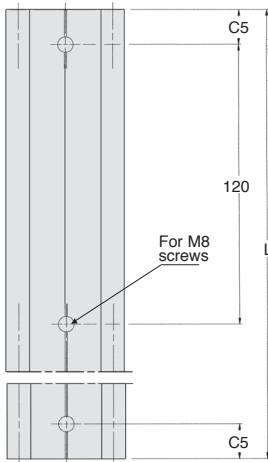
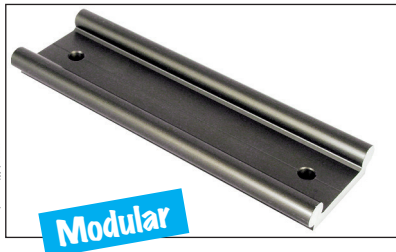




- Material: Hard anodised aluminium
- Standard length: 1000mm
- Other lengths available (up to 4000 mm)
- For bearing blocks **WJUM20** and **WJRM20**



DISCOUNTS

Qty	1+	5+	10+	15+	20+
Disc.	List	-10%	-15%	-20%	On request

Part number	Length L (mm)	Max. length L (mm)	C5 mini	C5 maxi	Iy (mm ⁴)	Iz (mm ⁴)	Wby (mm ³)	Wbz (mm ³)	Weight (kg/m)	Stock*	Price each 1 to 4
WS20	1000	4000	20	79,5	9000	2850	1000	310	1,32	✓	110,61 €
WS20-80	1000	4000	20	79,5	108000	78700	21000	4000	3,30	✓	235,33 €

*Depending on availability - Dimensions in mm

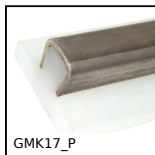
Our other products



PRF_GAL
Roller for aluminium profile, Flat roller



SUA4_L
Chain link, Steel



GMK17_P
Flat Guide, Flat guide for conical profile



KK
Rounded end feather key, Steel



PR125
Articulated foot Ø123, Ø 123



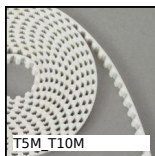
CRM
Moulded nylon rack, Nylon



PTA80ssEB
Articulated foot with sheet metal base Ø80, Articulated foot



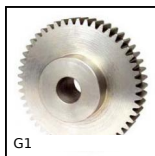
HCSS
Set screw with hexagonal socket, Cup point



T5M_T10M
T type timing belt per metre, T5 Steel cored polyurethane



BLH30
Right angled gearbox, from 1.32 to 4.40 Nm



G1
Steel spur gear, Steel 20NCD2



RFK38B
Hypoid gearbox - Stainless steel, up to 200 Nm

Complementary products



WJUM20
Drylin® W bearing block, Slide



WW20
Drylin® W slide, slide assembly



WJRM
Drylin® W hybrid bearing block, Hybrid bearings