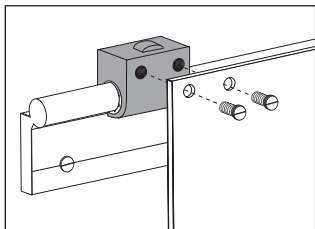


# Linear guide system **Drylin® W**

## WJRM

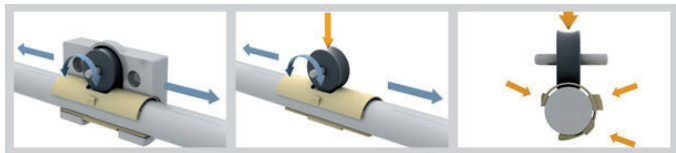
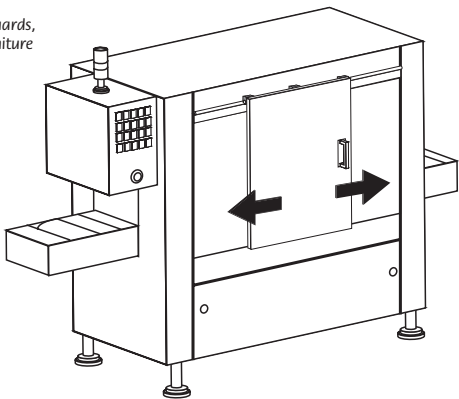
## Hybrid bearings

- Drylin W hybrid bearings offer a unique combination of sliding and rolling movement. Depending on the mounting arrangement used, the use of maintenance free rollers reduce the driving force required. Any shear forces or shock forces are absorbed by the bearing. This hybrid bearing is ideally suited for manual adjustments especially in the applications such as door adjustments.
- Low driving force required, coefficient of friction 0.04 to 0.05 $\mu$
- Highly cost effective solution
- Can be used with any of 7 profiles rails such as WS10, WS16 and WS20



### Applications

- Adjustable doors, machine guards, simple handling systems, furniture



# Linear guide system **Drylin® W**

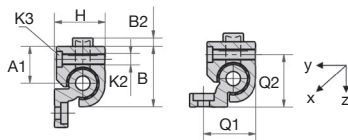
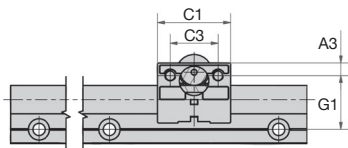
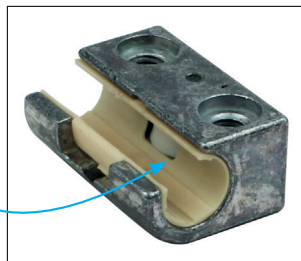
Sizes 10-16-20

**WJRM**

- **Material :**  
Zamack  
Liner manufactured from iglidur J

## Advantages

- No lubrication required
- Small size
- Lightweight



WJRM01-10  
WJRM01-16  
WJRM01-20

WJRM02-10  
WJRM01-16  
WJRM01-20

## DISCOUNTS

Qty	1+	5+	10+	15+	20+
Disc.	List	-10%	-15%	-20%	On request

Part number	Static load Co (N)	Dynamic load Cz capacity for a total travel distance of (km)			F <sub>xv</sub> Max (N.m/s)
		10 (N)	100 (N)	200 (N)	
WJRM01-10	250	250	90	50	50
WJRM02-10	250	250	90	50	50
WJRM01-16	400	400	140	70	80
WJRM01-20	550	550	200	100	80

Part number	A1	A3	B	B2	C1	C3	G1	H	K2	K3	Q1	Q2	Weight (g)	Price each
														1 to 4
WJRM01-10	16,5	6,5	26	2,5	35	22	27	18	M6	M5	-	-	46	23,30 €
WJRM02-10	16,5	6,5	26	2,5	35	22	27	18	M6	M5	26	19	46	23,30 €
WJRM01-16	25	9	34,5	5	48	30	33	27	M8	M6	32	28	131	50,96 €
WJRM01-20	30	9	42,5	6	52	34	38	36	M8	M6	37	37	232	59,49 €

Dimensions in mm

Fax: 0 825 88 6000 Service 0,15€/mln + prix appel

cial2@hpceurope.com

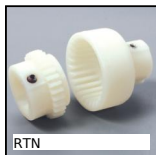
WEB  
04/2020

**HPC**

## Our other products



Steel bevel gear, 2:1



BoWex® curved tooth gear coupling, Nylon



Shaft locking washer, E clip



Pull handle, Up to 250 °C



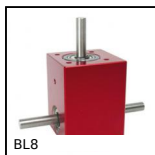
Extension springs  
DIN2097, DIN 2097



Indexing plunger mini,  
miniature - Stainless steel



Mushroom headed  
button Hygienic  
Usit®, With male  
thread and high head



Right angled gearbox,  
from 0.20 to 2 Nm



Sealing brush strip,  
3m length



Miniature ballscrew,  
Nut+rolled ballscrew



Motor-gearbox 12V  
and 24V DC, from



Moulded plastic bevel gear (nylon), 1:1

## Complementary products



Drylin® W rail, Rail



Drylin® W rail, Rail



Drylin® W rail, Rail