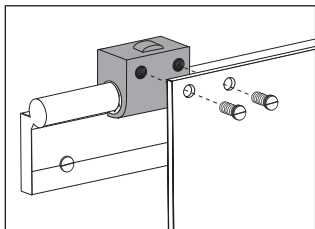


# Linear guide system **Drylin® W**

## WJRM

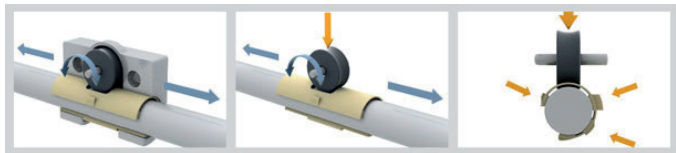
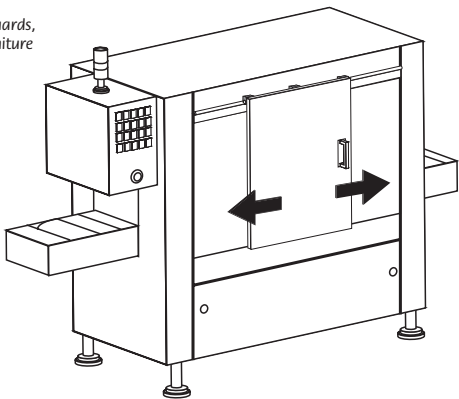
## Hybrid bearings

- Drylin W hybrid bearings offer a unique combination of sliding and rolling movement. Depending on the mounting arrangement used, the use of maintenance free rollers reduce the driving force required. Any shear forces or shock forces are absorbed by the bearing. This hybrid bearing is ideally suited for manual adjustments especially in the applications such as door adjustments.
- Low driving force required, coefficient of friction 0.04 to 0.05 $\mu$
- Highly cost effective solution
- Can be used with any of 7 profiles rails such as WS10, WS16 and WS20



### Applications

- Adjustable doors, machine guards, simple handling systems, furniture



# Linear guide system **Drylin® W**

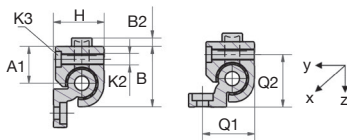
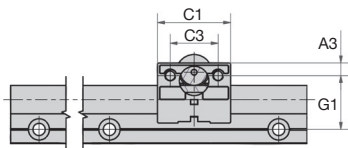
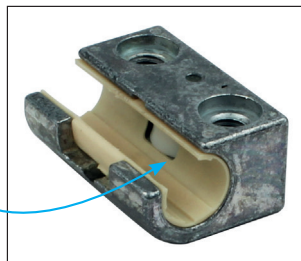
Sizes 10-16-20

**WJRM**

- **Material :**  
Zamack  
Liner manufactured from iglidur J

## Advantages

- No lubrication required
- Small size
- Lightweight



WJRM01-10  
WJRM01-16  
WJRM01-20

WJRM02-10  
WJRM01-16  
WJRM01-20

## DISCOUNTS

Qty	1+	5+	10+	15+	20+
Disc.	List	-10%	-15%	-20%	On request

Part number	Static load Co (N)	Dynamic load Cz capacity for a total travel distance of (km)			F <sub>xv</sub> Max (N.m/s)
		10 (N)	100 (N)	200 (N)	
WJRM01-10	250	250	90	50	50
WJRM02-10	250	250	90	50	50
WJRM01-16	400	400	140	70	80
WJRM01-20	550	550	200	100	80

Part number	Dimensions in mm													Weight Price each	
	A1	A3	B	B2	C1	C3	G1	H	K2	K3	Q1	Q2	(g)	1 to 4	
WJRM01-10	16,5	6,5	26	2,5	35	22	27	18	M6	M5	-	-	46	23,30 €	
WJRM02-10	16,5	6,5	26	2,5	35	22	27	18	M6	M5	26	19	46	23,30 €	
WJRM01-16	25	9	34,5	5	48	30	33	27	M8	M6	32	28	131	50,96 €	
WJRM01-20	30	9	42,5	6	52	34	38	36	M8	M6	37	37	232	59,49 €	

Dimensions in mm

## Our other products



SMLS  
Linear table, For small lengths



RURp  
Wheel pivoting with plate, Polyurethane - Aluminium rim (Free running)



PARF110  
Pressed steel base rigid foot, Swivelling Ø110



LFM2  
Steel leadscrew, Medium carbon steel - 2 threads



BSB  
Ballscrew bearing unit, Support



WSS  
Symmetrical S shaped hook, Steel



MBEX  
Hexagonal ended handle, Hexagonal ended handle



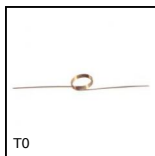
GLB  
Small 6 lobe threaded handle - female, Technopolymer - Stainless steel



PLN  
Cylindrical spacer, Thermoplastic



BSM\_LOK  
Long-Lok spring plunger with internal hexagonal socket,



TO  
Torsion spring, Stainless steel



CHMR50  
Worm and wheel gear reducer, up to 107 Nm

## Complementary products



WS10  
Drylin® W rail, Rail



WS16  
Drylin® W rail, Rail



WS20  
Drylin® W rail, Rail