

# Wing nut, hand tightened **DIN315**

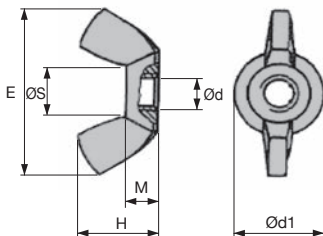
Brass

**WINGBR**

- Wing nut conforming to DIN315
- Material:  
Brass

## Advantages

- Easy hand tightening



## DISCOUNTS

Qty	1+	6+	11+
Disc.	Net	-10%	On request

Part N°	ØD	E	H	M	ØD1	ØS	Qty/pack	Price each
								1 to 5
WING-M4/BR/B	M4	20	10,5	4,6	8	7	100	32,76 €
WING-M5/BR/B	M5	26	13	6,5	11	9	100	34,88 €
WING-M6/BR/B	M6	33	17	8	13	11	100	56,28 €
WING-M8/BR/B	M8	39	20	10	16	12,5	100	103,98 €

All dimensions in mm

**Fax** 0 825 88 6000  
Service 0,15 € / min  
+ prix appel

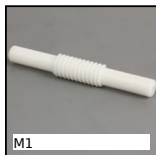
cial2@hpceurope.com

**HPC**

SUPPLEMENT 2019

191

## Our other products



Worm and wheel set,  
Machined plastic  
(delrin)



Coupling bar for  
aluminium profile,  
Coupling bar



Indexing plunger,  
steel class 5.8



Self-lubricating  
blanks, Bronze BP25



Machined plastic  
bevel gear, 2:1



Worm and wheel set,  
Non hardened steel



Adjustable latch  
clamp with strike  
plate, Stroke from  
117,4mm to 128mm



Spur gear - precision  
range, Stainless steel  
316



Adjustable latch  
clamp with strike  
plate



Spring hinge, welded



Half-rail guide, Rail



Eco. range steel bevel  
gear, 4:1

## Complementary products



Hexagonal headed  
screw VTH - DIN933,  
Brass



Manually tightened  
wing nut DIN315,  
Brass DIN 315



Hexagonal nut  
DIN934, Brass



Washer - DIN125,  
Brass