

Manually operated wing nut

WING

Steel (ANSI B18-17) or
Stainless steel (DIN315/315)

- **Wing nut**

- **Materials:**

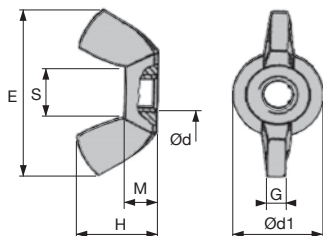
Steel wing nut (conforms to ANSI B18-17):

chromed forged steel

Stainless steel wing nut

(conforms to DIN314/315):

A2 stainless steel



DISCOUNTS

Qty per packs	1+	6+	20+	50+
Discounts	List	-5%	-20%	On request

Part number	Ød	Ød1	S	E	G	H	M	Qty per packs	Price each 1 to 5
Steel									
WING-M3/B	M3	7,5	-	18,5	-	8,8	3,0	500	46,18 €
WING-M4/B	M4	7,8	-	18,5	-	8,8	3,0	500	49,76 €
WING-M5/B	M5	9,5	-	22,5	-	10,5	3,8	500	51,19 €
WING-M6/B	M6	12,4	-	27,2	-	12,7	4,7	500	57,57 €
WING-M8/B	M8	13,5	-	30,0	-	14,6	5,6	200	30,05 €
WING-M10/B	M10	15,6	-	35,0	-	16,7	6,3	200	48,64 €
WING-M12/B	M12	20,5	-	47,6	-	22,3	7,5	100	53,29 €
A2 stainless steel									
WING-M3/SS/B	M3	6,8	4,5	15,3	1,2	7,2	2,4	100	13,61 €
WING-M4/SS/B	M4	8,0	5,2	17,6	1,6	8,6	2,9	100	12,98 €
WING-M5/SS/B	M5	10,3	6,7	22,5	2,1	11,0	4,1	100	14,14 €
WING-M6/SS/B	M6	12,7	8,4	27,8	2,5	13,6	5,1	100	20,01 €
WING-M8/SS/B	M8	13,8	9,1	30,3	2,8	14,8	5,6	100	28,23 €
WING-M10/SS/B	M10	16,5	11	36,2	3,3	17,7	6,8	100	50,21 €
WING-M12/SS/B	M12	22,5	15	49,4	4,5	24,1	9,0	50	53,53 €

Dimensions in mm

Our other products



BAP25

Plastic clamping collar, Ø25 - Ø40



PMC150_M16

Anti-vibration machine mount, Square base plate



H025S

Needle roller universal joint - Stainless steel, Heavy duty DIN808-7...



PP60

Worm and wheel gear reducer, from 17.80 to 34 Nm



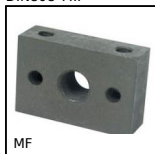
MSP3815

Masterplate® glueable insert rectangular, rectangular with nut



CFES

Eccentric cam follower, Eccentric



MF

Shock Absorber universal flange, Universal fixing



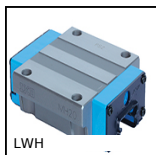
RJA00_28

Sealing strip, Clipping



VTSM

Ball head screws Hygienic Design®



LWH

High rigidity linear slide, Chariot - from



BAC105

Storage bin, 8mm



PSP

Support profile, Panel support

Complementary products



NIN

Self-locking nut, Steel



SHN

Hexagonal nut DIN934, Steel (Class 6|8)



CHC

Socket headed screw, Steel class 12.19



WINGbrEcrou

Manually tightened wing nut DIN315, Brass DIN 315