



Flanged polymer nut

1 trapezoidal right-hand thread

WFRM

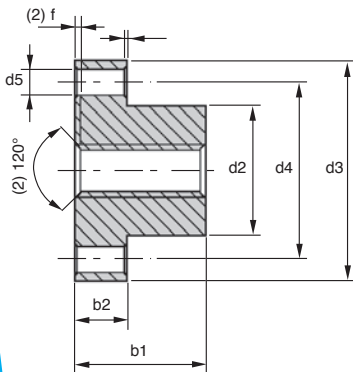
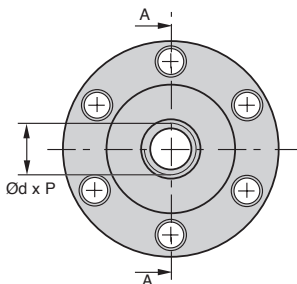
- Material: **iglidur®** W300

Advantages

- Dry working
- Not affected by dirt
- No maintenance required
- No corrosion
- Silent in operation

Accessories

- **LFM** steel lead screw or **LSM** stainless steel lead screw



No maintenance

DISCOUNTS

Qty	1+	6+	20+	40+	60+
Disc.	List	-10%	-15%	-20%	On request

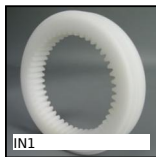
Part number	Ød	Pitch P	d2	d3	d4	d5	b1	b2	Stock*	Price each 1 to 5
WFRM102	10	2	25	42	34	5	25	10	✓	30,88 €
WFRM123	12	3	28	48	38	6	35	12	✓	37,72 €
WFRM164	16	4	28	48	38	6	35	12	✓	48,24 €
WFRM184	18	4	28	48	38	6	35	12	✓	57,36 €
WFRM204	20	4	32	55	45	7	44	12	✓	57,56 €
WFRM245	24	5	32	55	45	7	44	12	✓	79,83 €
WFRM306	30	6	38	62	50	7	46	14	✓	86,87 €

*Depending on availability - Dimensions in mm

Our other products



DB
Steel bevel gear, 2:1



IN1
Internal gear,
Machined plastic
(delrin)



PRF_RR
Coupling bar for
aluminium profile,
Coupling bar



PO
Pull handle - Multi-
sector, Tapped
recessed insert



CHB
Reaction arm, CHB
gear reducers
reaction arm



CHAL3
Piano hinge, Steel



BPHT
Ball transfer unit bolt
fitting, Heavy



RJUM05
Drylin R® linear
bearing housing,
Closed - Long



CHMBR
Reaction arm, CHM
and CHMR gear



DOG319
Motor-gearbox 12V
and 24V DC, from 4 to



MSP3815
Masterplate®
glueable insert



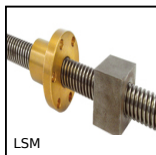
NPTF20
Fixed tube carrier,
Fixed Ø10 to Ø14

Complementary products

tapped i...



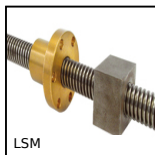
LFM
Steel leadscrew,
Medium carbon steel -
1 thread



LSM
Stainless steel 316L
leadscrew, Stainless
steel - 1 thread



LFM
Steel leadscrew,
Medium carbon steel -
1 thread



LSM
Stainless steel 316L
leadscrew, Stainless
steel - 1 thread