

3 lobed handle



VTLM Black polyamide with steel insert

Improved tightening

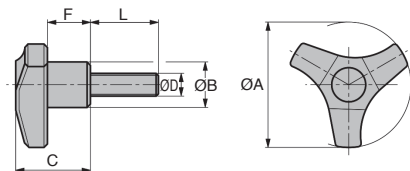
- Operating element

- Materials:

Black polyamide, matt surface finish
Chromed steel thread

Advantages

- Highly resistant, increased tightening force
- Suitable for all hand sizes



DISCOUNTS

Qty	1+	10+	20+	50+	100+	200+
Disc.	List	-5%	-10%	-15%	-20%	On request

Part number	ØD	ØA	ØB	C	F	L	Weight (g)	Stock*	Price each 1 to 9
VTLM6-15-45	M6	45	18	27	16	15	15,4	✓	2,16 €
VTLM6-20-45	M6	45	18	27	16	20	16,4	✓	2,16 €
VTLM6-25-45	M6	45	18	27	16	25	17,0	-	2,25 €
VTLM6-30-45	M6	45	18	27	16	30	17,4	-	2,25 €
VTLM6-40-45	M6	45	18	27	16	40	20,0	✓	2,25 €
VTLM8-15-45	M8	45	18	27	16	15	19,0	-	2,25 €
VTLM8-20-45	M8	45	18	27	16	20	20,2	-	2,42 €
VTLM8-30-45	M8	45	18	27	16	30	23,6	✓	2,42 €
VTLM8-40-45	M8	45	18	27	16	40	27,0	-	2,46 €
VTLM10-20-45	M10	45	18	27	16	20	30,0	-	2,49 €
VTLM10-30-45	M10	45	18	27	16	30	35,0	-	2,62 €
VTLM6-20-55	M6	55	20	33	19	20	22,8	-	2,46 €
VTLM6-25-55	M6	55	20	33	19	25	23,6	-	2,54 €
VTLM6-40-55	M6	55	20	33	19	40	26,8	-	2,54 €
VTLM8-20-55	M8	55	20	33	19	20	27,2	-	2,54 €
VTLM8-30-55	M8	55	20	33	19	30	30,0	✓	2,54 €
VTLM8-40-55	M8	55	20	33	19	40	33,4	✓	2,62 €
VTLM10-15-55	M10	55	20	33	19	15	32,0	-	2,80 €
VTLM10-20-55	M10	55	20	33	19	20	36,4	-	2,80 €
VTLM10-30-55	M10	55	20	33	19	30	42,0	-	2,87 €

*Depending on availability - Dimensions in mm



3 lobed handle

Black polyamide with brass insert

VTLF

- Operating element
- Materials:

Black polyamide
Brass insert

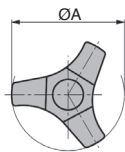
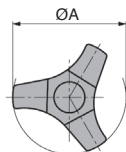
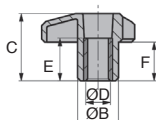
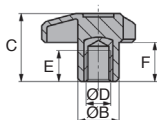
Advantages

- Highly resistant, increased tightening force
- Suitable for all hand sizes
- Can be used outside

Improved tightening



Brass insert



Blind tapped brass insert

Through tapped brass insert

DISCOUNTS

Qty	1+	10+	20+	50+	100+	200+
Disc.	List	-5%	-10%	-15%	-20%	On request

Part number	ØD	ØA	ØB	C	F	E	Weight (g)	Stock*	Price each 1 to 9
Blind tapped brass insert									
VTLFB6-45	M6	45	18	27	16	14	13,8	✓	2,95 €
VTLFB8-45	M8	45	18	27	16	14	15,6	✓	3,07 €
VTLFB10-45	M10	45	18	27	16	14	17,2	-	3,40 €
VTLFB8-55	M8	55	20	33	19	14	22,8	-	3,45 €
VTLFB10-55	M10	55	20	33	19	14	23,4	✓	3,78 €
VTLFB12-55	M12	55	20	33	19	14	25,6	✓	4,06 €
Through tapped brass insert									
VTLF6-45	M6	45	18	27	16	14	12,4	-	3,45 €
VTLF8-45	M8	45	18	27	16	14	13,2	✓	3,40 €
VTLF10-45	M10	45	18	27	16	14	13,2	✓	3,74 €
VTLF8-55	M8	55	20	33	19	14	18,2	-	3,74 €
VTLF10-55	M10	55	20	33	19	14	19,2	✓	3,86 €
VTLF12-55	M12	55	20	33	19	14	19,8	✓	4,22 €

*Depending on availability - Dimensions in mm

Three-lobe knob



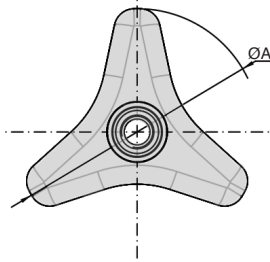
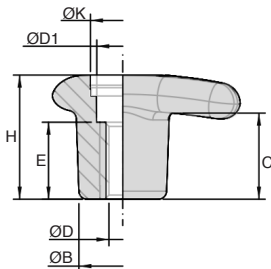
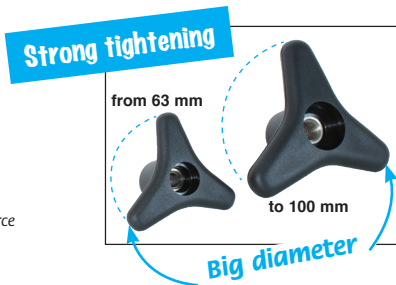
VTLB

Thermoplastic

- **Operating element**
- Insert with *tapped through hole*
- Working T° range -30°C to +130°C
- **Materials**
 - Black polyamide PA6 noir glass fiber reinforced
 - Brass or stainless steel 303 insert

Advantages

Handwheel size up to 100mm diameter provides excellent grip and clamping force



DISCOUNT

Qty	1+	10+	20+	50+	100+
Disc.	List	-5%	-10%	-15%	On request

Part number												Stock*		Price each 1 à 9	
Brass insert	Stainless steel insert	ØA	ØB	C	ØD	E	H	ØD1	ØK	Weight (g)	Brass	Stainless steel	Brass	Stainless steel	
VTLB8-63	VTLB8-63/SS	63	21	21	M8	18,5	30	12,5	Ø15	30	-	-	7,34 €	13,08 €	
VTLB10-63	-	63	21	21	M10	18,5	30	12,5	Ø15	34	-	-	7,59 €	-	
VTLB10-80	VTLB10-80/SS	80	26	23	M10	25	35	13	Ø20	59	-	-	8,93 €	13,36 €	
VTLB12-80	-	80	26	23	M12	25	35	13	Ø20	61	-	-	9,69 €	-	
VTLB12-100	VTLB12-100/SS	100	30	25	M12	25	38	17	Ø25	87	-	-	12,57 €	18,17 €	
VTLB14-100	-	100	30	25	M14	25	38	17	Ø25	89	-	-	13,61 €	-	

*Depending on availability - Dimensions in mm

Our other products



BABPass

Hardened stainless steel ball pin with ring, With grip ring



INS100

Self tapping inserts-coarse thread, Coarse thread



SSB

Stainless steel bevel gear, 1:1



SSG1

Stainless steel spur gear, Stainless steel 304L



CHM63

Worm and wheel gear reducer, up to 196 Nm



J53

Spur gear coaxial gearbox, from 0.43 to 1.15 - In-line



SERB

Cam latch, Cam latch



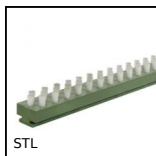
PM2

Worm and wheel set, Hardened steel



NPR

Reflector support,



STL

Guidance brush - Brush, Brush



AC144

Strike for toggle latch, 22mm



ACLBS

Closing system for aluminium profile, Spacer for spherical ended stop

Complementary products



VTLF

3 lobed handle, Polyamide - Brass



VTLF

3 lobed handle, Polyamide - Brass



GLP

Small 6 lobe threaded handle - male, Technopolymer - Steel



VB

Small 6 lobe threaded handle - female, Duroplast - Brass