

3 lobed handle



VTLM Black polyamide with steel insert

Improved tightening

- **Operating element**

- **Materials:**

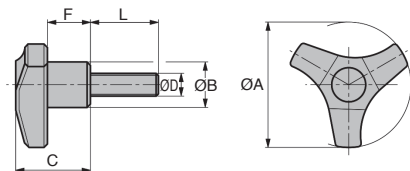
Black polyamide, matt surface finish

Chromed steel thread

Advantages

- Highly resistant, increased tightening force

- Suitable for all hand sizes



DISCOUNTS

Qty	1+	10+	20+	50+	100+	200+
Disc.	List	-5%	-10%	-15%	-20%	On request

Part number	ØD	ØA	ØB	C	F	L	Weight (g)	Stock*	Price each 1 to 9
VTLM6-15-45	M6	45	18	27	16	15	15,4	✓	2,16 €
VTLM6-20-45	M6	45	18	27	16	20	16,4	✓	2,16 €
VTLM6-25-45	M6	45	18	27	16	25	17,0	-	2,25 €
VTLM6-30-45	M6	45	18	27	16	30	17,4	-	2,25 €
VTLM6-40-45	M6	45	18	27	16	40	20,0	✓	2,25 €
VTLM8-15-45	M8	45	18	27	16	15	19,0	-	2,25 €
VTLM8-20-45	M8	45	18	27	16	20	20,2	-	2,42 €
VTLM8-30-45	M8	45	18	27	16	30	23,6	✓	2,42 €
VTLM8-40-45	M8	45	18	27	16	40	27,0	-	2,46 €
VTLM10-20-45	M10	45	18	27	16	20	30,0	-	2,49 €
VTLM10-30-45	M10	45	18	27	16	30	35,0	-	2,62 €
VTLM6-20-55	M6	55	20	33	19	20	22,8	-	2,46 €
VTLM6-25-55	M6	55	20	33	19	25	23,6	-	2,54 €
VTLM6-40-55	M6	55	20	33	19	40	26,8	-	2,54 €
VTLM8-20-55	M8	55	20	33	19	20	27,2	-	2,54 €
VTLM8-30-55	M8	55	20	33	19	30	30,0	✓	2,54 €
VTLM8-40-55	M8	55	20	33	19	40	33,4	✓	2,62 €
VTLM10-15-55	M10	55	20	33	19	15	32,0	-	2,80 €
VTLM10-20-55	M10	55	20	33	19	20	36,4	-	2,80 €
VTLM10-30-55	M10	55	20	33	19	30	42,0	-	2,87 €

*Depending on availability - Dimensions in mm



3 lobed handle

Black polyamide with brass insert

VTLF

- Operating element
- Materials:

Black polyamide
Brass insert

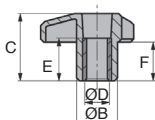
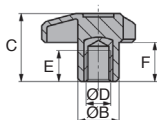
Advantages

- Highly resistant, increased tightening force
- Suitable for all hand sizes
- Can be used outside

Improved tightening



Brass insert



Blind tapped
brass insert

Through tapped
brass insert

DISCOUNTS

Qty	1+	10+	20+	50+	100+	200+
Disc.	List	-5%	-10%	-15%	-20%	On request

Part number	ØD	ØA	ØB	C	F	E	Weight (g)	Stock*	Price each 1 to 9
Blind tapped brass insert									
VTLFB6-45	M6	45	18	27	16	14	13,8	✓	2,95 €
VTLFB8-45	M8	45	18	27	16	14	15,6	✓	3,07 €
VTLFB10-45	M10	45	18	27	16	14	17,2	-	3,40 €
VTLFB8-55	M8	55	20	33	19	14	22,8	-	3,45 €
VTLFB10-55	M10	55	20	33	19	14	23,4	✓	3,78 €
VTLFB12-55	M12	55	20	33	19	14	25,6	✓	4,06 €
Through tapped brass insert									
VTLF6-45	M6	45	18	27	16	14	12,4	-	3,45 €
VTLF8-45	M8	45	18	27	16	14	13,2	✓	3,40 €
VTLF10-45	M10	45	18	27	16	14	13,2	✓	3,74 €
VTLF8-55	M8	55	20	33	19	14	18,2	-	3,74 €
VTLF10-55	M10	55	20	33	19	14	19,2	✓	3,86 €
VTLF12-55	M12	55	20	33	19	14	19,8	✓	4,22 €

*Depending on availability - Dimensions in mm

Three-lobe knob



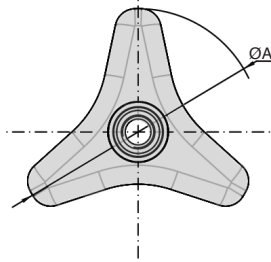
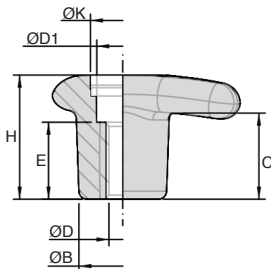
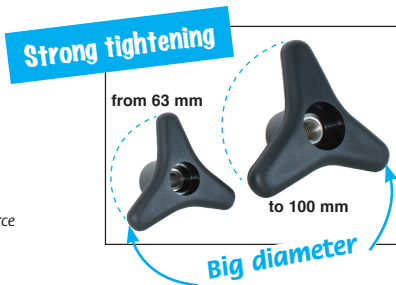
VTLB

Thermoplastic

- **Operating element**
- Insert with *tapped* through hole
- Working T° range -30°C to +130°C
- Materials
 - Black polyamide PA6 noir glass fiber reinforced
 - Brass or stainless steel 303 insert

Advantages

Handwheel size up to 100mm diameter provides excellent grip and clamping force



DISCOUNT

Qty	1+	10+	20+	50+	100+
Disc.	List	-5%	-10%	-15%	On request

Part number										Stock*		Price each 1 à 9		
Brass insert	Stainless steel insert	ØA	ØB	C	ØD	E	H	ØD1	ØK	Weight (g)	Brass	Stainless steel	Brass	Stainless steel
VTLB8-63	VTLB8-63/SS	63	21	21	M8	18,5	30	12,5	Ø15	30	-	-	7,34 €	13,08 €
VTLB10-63	-	63	21	21	M10	18,5	30	12,5	Ø15	34	-	-	7,59 €	-
VTLB10-80	VTLB10-80/SS	80	26	23	M10	25	35	13	Ø20	59	-	-	8,93 €	13,36 €
VTLB12-80	-	80	26	23	M12	25	35	13	Ø20	61	-	-	9,69 €	-
VTLB12-100	VTLB12-100/SS	100	30	25	M12	25	38	17	Ø25	87	-	-	12,57 €	18,17 €
VTLB14-100	-	100	30	25	M14	25	38	17	Ø25	89	-	-	13,61 €	-

*Depending on availability - Dimensions in mm

Our other products



PR85
Articulated foot Ø83,
Ø 83



BTCW
Cap for square tube to
be welded, To be
welded



BIM
Indexing plunger mini,
miniature



BAGtr
Lead screw clamping
collar, Aluminium



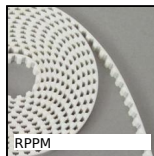
RESC
Retractable castor for
aluminium profile,
Retractable castor



ZDB
Machined plastic
bevel gear , 2:1



SSB
Stainless steel bevel
gear, 1:1



RPPM
RPP type belt per
metre, RPP8 Steel
cored polyurethane



Gdal
Double universal joint
eco series, Low duty



RHTplss
High Temperature
Castor, up to 200kg



EBH
Cap nut Hygienic
Design®, With collar



PTA150
Articulated levelling
foot, pressed base
Ø150, Ø 150

Complementary products



VTLB
Three-lobed knob,
Thermoplastic / Brass
or stainless steel
insert



GLB
Small 6 lobe female
handle,
Technopolymer -
Brass



GLP
Small 6 lobe threaded
handle - male,
Technopolymer - Steel



VB
Small 6 lobe threaded
handle - female,
Duroplast - Brass