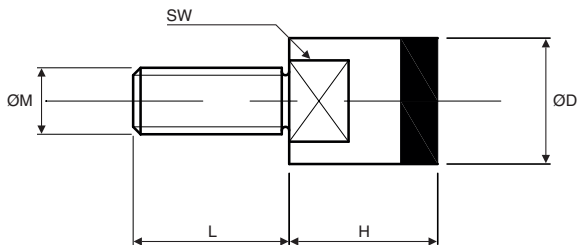


Magnetic head screw

VTAP

With rubber coating

- **Magnetic screw with rubber coating**
- With magnet incorporated in the screw head
- According to DIN EN ISO 4017-8,8
- Temperature of use: Max. 80°C
- Materials:
 - Zinc-plated steel body
 - NdFeB Magnet



DISCOUNTS

Qty	1+	5+	20+	40+	60+
Disc.	List	-15%	-20%	-30%	On request

Part number	ØM	ØD	L	H	SW	F (N)	Weight (g)	Price each 1 to 4
VTAP6-13	M6	13	10	16	11	15	13	17,14 €
VTAP8-16	M8	16	12	18	13	23	23	20,55 €
VTAP10-20	M10	20	14	20	17	46	44	25,29 €

*Depending on availability - Tolerances +/-0.2mm - Dimensions in mm

Magnetic screw with socket

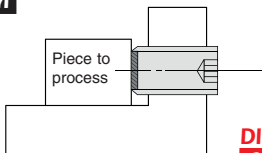
Steel

HCA

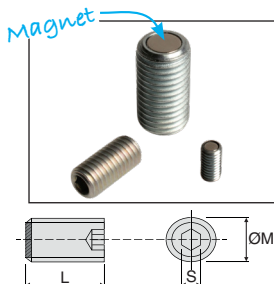
- **Magnetic screw with socket hexagonal head**
- With magnet incorporated at the end of the screw.
- According to DIN EN ISO 4017-8,8
- Temperature of use: Max. 80°C
- Materials:
Zinc-plated steel body
NdFeB Magnet

Application

- Sensor counter
- Fixtures



Example of use:
Fixtures



DISCOUNTS

Qty	1+	5+	20+	40+	60+
Disc.	List	-15%	-20%	-30%	On request

Part number	ØM	L	S	F (N)	Weight (g)	Price each 1 to 4
HCA6-12	M6	12	3	2,5	2	6,73 €
HCA6-16	M6	16	3	2,5	3	6,80 €
HCA6-20	M6	20	3	2,5	4	6,87 €
HCA6-25	M6	25	3	2,5	5	7,01 €
HCA6-30	M6	30	3	2,5	6	7,08 €
HCA8-16	M8	16	4	7,0	6	7,01 €
HCA8-20	M8	20	4	7,0	8	7,15 €
HCA8-25	M8	25	4	7,0	10	7,23 €
HCA8-30	M8	30	4	7,0	11	7,38 €
HCA8-40	M8	40	4	7,0	15	7,74 €
HCA10-20	M10	20	5	11,0	12	7,52 €
HCA10-25	M10	25	5	11,0	15	7,74 €
HCA10-30	M10	30	5	11,0	18	7,85 €
HCA10-40	M10	40	5	11,0	24	8,20 €
HCA10-50	M10	50	5	11,0	30	8,64 €
HCA12-25	M12	25	6	17,0	21	8,35 €
HCA12-30	M12	30	6	17,0	25	8,57 €
HCA12-40	M12	40	6	17,0	34	9,07 €
HCA12-50	M12	50	6	17,0	43	9,54 €
HCA12-60	M12	60	6	17,0	52	10,04 €
HCA16-30	M16	30	8	35,0	45	11,02 €
HCA16-40	M16	40	8	35,0	60	11,66 €
HCA16-50	M16	50	8	35,0	76	12,35 €
HCA16-60	M16	60	8	35,0	92	13,00 €
HCA16-80	M16	80	8	35,0	123	14,33 €

*Depending on availability - Dimensions in mm

Magnetic screw with hexagonal head

VTHA

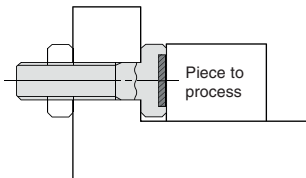
Steel

- **Magnetic screw with hexagonal head**
- With magnet incorporated in the screw head
- According to DIN EN ISO 4017-8,8
- Temperature of use: Max. 80°C
- Materials:
 - Zinc-plated steel body
 - NdFeB Magnet

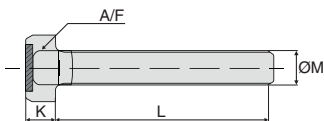


Application

- Sensor counter
- Fixtures



Example of use:
Fixtures



DISCOUNTS

Qty	1+	5+	20+	40+	60+
Disc.	List	-15%	-20%	-30%	On request

Part number	ØM	L	K	A/F	F (N)	Weight (g)	Price each
VTHA6-12	M6	12	4,3	10	25	6	7,59 €
VTHA6-16	M6	16	4,3	10	25	6	7,66 €
VTHA6-20	M6	20	4,3	10	25	7	7,74 €
VTHA6-25	M6	25	4,3	10	25	8	7,85 €
VTHA6-30	M6	30	4,3	10	25	10	7,92 €

*Depending on availability - Dimensions in mm

HPC

WEB
04/2021

www.hpceurope.com

Tél: 0 825 88 5000 Service 0,15 €/min + prix appel

DISCOUNTS

Qty	1+	5+	20+	40+	60+
Disc.	List	-15%	-20%	-30%	On request

Part number	ØM	L	K	A/F	F (N)	Weight (g)	Price each 1 to 4
VTHA8-16	M8	16	4,3	13	50	11	8,28 €
VTHA8-20	M8	20	4,3	13	50	12	8,43 €
VTHA8-25	M8	25	4,3	13	50	15	8,50 €
VTHA8-30	M8	30	4,3	13	50	17	8,64 €
VTHA8-40	M8	40	4,3	13	50	21	9,00 €
VTHA10-20	M10	20	6,3	17	75	24	9,75 €
VTHA10-25	M10	25	6,3	17	75	27	9,90 €
VTHA10-30	M10	30	6,3	17	75	31	10,04 €
VTHA10-40	M10	40	6,3	17	75	37	10,47 €
VTHA10-50	M10	50	6,3	17	75	43	10,81 €
VTHA12-25	M12	25	7,5	19	110	40	11,38 €
VTHA12-30	M12	30	7,5	19	110	45	11,59 €
VTHA12-40	M12	40	7,5	19	110	54	11,73 €
VTHA12-50	M12	50	7,5	19	110	62	12,20 €
VTHA12-60	M12	60	7,5	19	110	71	12,70 €
VTHA16-30	M16	30	10,0	24	145	86	13,90 €
VTHA16-40	M16	40	10,0	24	145	100	14,62 €
VTHA16-50	M16	50	10,0	24	145	117	14,62 €
VTHA16-60	M16	60	10,0	24	145	133	15,95 €
VTHA16-80	M16	80	10,0	24	145	165	17,28 €

*Depending on availability - Dimensions in mm

Our other products



HS

Hexagonal spacer,
Stainless steel 303



M0

Worm and wheel set,
Machined plastic
(delrin)



SVG

Adjustable latch
clamp with catch-
plate, Stroke from
174mm to 190mm



TCLpoche

T-Clip - Aluminium
profile attachment,
Pocket fastening
system



BLH70

Right angled gearbox,
from 26 to 128 Nm



ZBconique

Machined plastic
bevel gear, 1:1



NKIA

Combined bearing
with inner ring, Axial
load in one direction



BLHM60

Right angled gearbox,
double output shafts,
up to 70 Nm



PRES

Manual workbench
press, Tool holder



MET

Bushing, Self-
lubricating sintered



GE32

Sprung toggle latch
with connecting link,



GDR882

Straight track, Range
882

Complementary products



VTAP

Magnetic head screw,
With rubber coating
With rubber coating



HCA

Magnetic screw with
socket, Steel