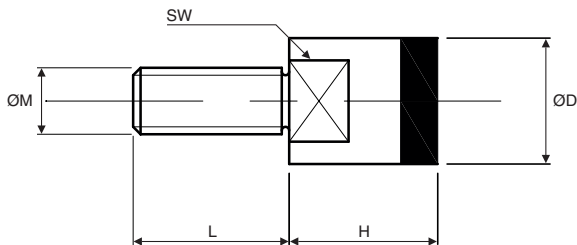


# Magnetic head screw

## VTAP

## With rubber coating

- **Magnetic screw with rubber coating**
- With magnet incorporated in the screw head
- According to DIN EN ISO 4017-8,8
- Temperature of use: Max. 80°C
- Materials:
  - Zinc-plated steel body
  - NdFeB Magnet



### DISCOUNTS

Qty	1+	5+	20+	40+	60+
Disc.	List	-15%	-20%	-30%	On request

Part number	ØM	ØD	L	H	SW	F (N)	Weight (g)	Price each 1 to 4
VTAP6-13	M6	13	10	16	11	15	13	17,14 €
VTAP8-16	M8	16	12	18	13	23	23	20,55 €
VTAP10-20	M10	20	14	20	17	46	44	25,29 €

\*Depending on availability - Tolerances +/-0.2mm - Dimensions in mm

# Magnetic screw with socket

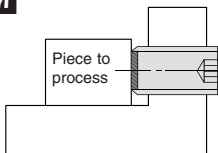
Steel

HCA

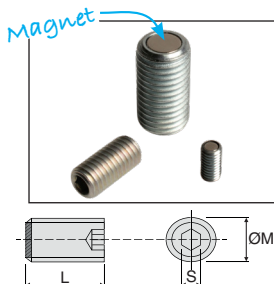
- **Magnetic screw with socket hexagonal head**
- With magnet incorporated at the end of the screw.
- According to DIN EN ISO 4017-8,8
- Temperature of use: Max. 80°C
- Materials:  
Zinc-plated steel body  
NdFeB Magnet

## Application

- Sensor counter
- Fixtures



Example of use:  
Fixtures



## DISCOUNTS

Qty	1+	5+	20+	40+	60+
Disc.	List	-15%	-20%	-30%	On request

Part number	ØM	L	S	F (N)	Weight (g)	Price each 1 to 4
HCA6-12	M6	12	3	2,5	2	6,73 €
HCA6-16	M6	16	3	2,5	3	6,80 €
HCA6-20	M6	20	3	2,5	4	6,87 €
HCA6-25	M6	25	3	2,5	5	7,01 €
HCA6-30	M6	30	3	2,5	6	7,08 €
HCA8-16	M8	16	4	7,0	6	7,01 €
HCA8-20	M8	20	4	7,0	8	7,15 €
HCA8-25	M8	25	4	7,0	10	7,23 €
HCA8-30	M8	30	4	7,0	11	7,38 €
HCA8-40	M8	40	4	7,0	15	7,74 €
HCA10-20	M10	20	5	11,0	12	7,52 €
HCA10-25	M10	25	5	11,0	15	7,74 €
HCA10-30	M10	30	5	11,0	18	7,85 €
HCA10-40	M10	40	5	11,0	24	8,20 €
HCA10-50	M10	50	5	11,0	30	8,64 €
HCA12-25	M12	25	6	17,0	21	8,35 €
HCA12-30	M12	30	6	17,0	25	8,57 €
HCA12-40	M12	40	6	17,0	34	9,07 €
HCA12-50	M12	50	6	17,0	43	9,54 €
HCA12-60	M12	60	6	17,0	52	10,04 €
HCA16-30	M16	30	8	35,0	45	11,02 €
HCA16-40	M16	40	8	35,0	60	11,66 €
HCA16-50	M16	50	8	35,0	76	12,35 €
HCA16-60	M16	60	8	35,0	92	13,00 €
HCA16-80	M16	80	8	35,0	123	14,33 €

\*Depending on availability - Dimensions in mm

# Magnetic screw with hexagonal head

## VTHA

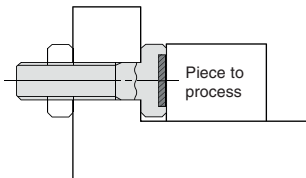
## Steel

- **Magnetic screw with hexagonal head**
- With magnet incorporated in the screw head
- According to DIN EN ISO 4017-8,8
- Temperature of use: Max. 80°C
- Materials:
  - Zinc-plated steel body
  - NdFeB Magnet

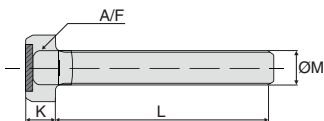


### Application

- Sensor counter
- Fixtures



Example of use:  
Fixtures



### DISCOUNTS

Qty	1+	5+	20+	40+	60+
Disc.	List	-15%	-20%	-30%	On request

Part number	ØM	L	K	A/F	F (N)	Weight (g)	Price each
VTHA6-12	M6	12	4,3	10	25	6	7,59 €
VTHA6-16	M6	16	4,3	10	25	6	7,66 €
VTHA6-20	M6	20	4,3	10	25	7	7,74 €
VTHA6-25	M6	25	4,3	10	25	8	7,85 €
VTHA6-30	M6	30	4,3	10	25	10	7,92 €

\*Depending on availability - Dimensions in mm

**HPC**

WEB  
04/2021

www.hpceurope.com

Tél: 0 825 88 5000 Service 0,15 €/min + prix appel

## DISCOUNTS

Qty	1+	5+	20+	40+	60+
Disc.	List	-15%	-20%	-30%	On request

Part number	ØM	L	K	A/F	F (N)	Weight (g)	Price each 1 to 4
VTHA8-16	M8	16	4,3	13	50	11	8,28 €
VTHA8-20	M8	20	4,3	13	50	12	8,43 €
VTHA8-25	M8	25	4,3	13	50	15	8,50 €
VTHA8-30	M8	30	4,3	13	50	17	8,64 €
VTHA8-40	M8	40	4,3	13	50	21	9,00 €
VTHA10-20	M10	20	6,3	17	75	24	9,75 €
VTHA10-25	M10	25	6,3	17	75	27	9,90 €
VTHA10-30	M10	30	6,3	17	75	31	10,04 €
VTHA10-40	M10	40	6,3	17	75	37	10,47 €
VTHA10-50	M10	50	6,3	17	75	43	10,81 €
VTHA12-25	M12	25	7,5	19	110	40	11,38 €
VTHA12-30	M12	30	7,5	19	110	45	11,59 €
VTHA12-40	M12	40	7,5	19	110	54	11,73 €
VTHA12-50	M12	50	7,5	19	110	62	12,20 €
VTHA12-60	M12	60	7,5	19	110	71	12,70 €
VTHA16-30	M16	30	10,0	24	145	86	13,90 €
VTHA16-40	M16	40	10,0	24	145	100	14,62 €
VTHA16-50	M16	50	10,0	24	145	117	14,62 €
VTHA16-60	M16	60	10,0	24	145	133	15,95 €
VTHA16-80	M16	80	10,0	24	145	165	17,28 €

\*Depending on availability - Dimensions in mm

## Our other products



RURp

Wheel pivoting with plate, Polyurethane - Aluminium rim (Free running)



SLHVlok

Horizontal toggle clamp, Horizontal toggle clamp / vertical foot



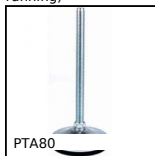
CLAT

Clamping lever Hygienic Usit® - male, Stainless steel



CHA135

Screwed hinge, 135 degrees



PTA80

Articulated levelling foot, pressed base Ø80, Ø 80



PTA80

Articulated levelling foot, pressed base Ø80, Ø 80



RBN

Wheel, Rubber tyre - Polypropylene rim



BLM

Spring loaded plunger with ball tip, Plastic body



SDCss

Positioning sleeve for indexing pin, For pin



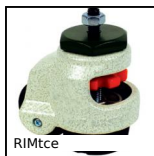
RCX-6

Spherical tilt washer - DIN6319, concave



YG2

HEAVY DUTY spur gear, Steel 35NCD6



RIMtce

Locking castor, with central hole

## Complementary products



VTHA

Magnetic screw with hexagonal head, Steel



HCA

Magnetic screw with socket, Steel