

## VT27 VT40

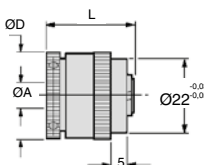
Torque up to 1.32Nm

- **Basic clutch to be insert into a hub**
- Protects equipment in case of excess torque
- Max. backlash 2°
- Max. sliding velocity: 1000 rpm
- Max surface temperature 80°C
- Power dissipation at 20°C :
  - 2 discs : 7 watts
  - 6 discs : 8.6 watts
- Materials:
  - Hubs + discs: treated steel
  - Casing + adjuster ring: aluminium

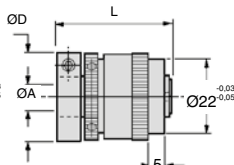


### Advantages

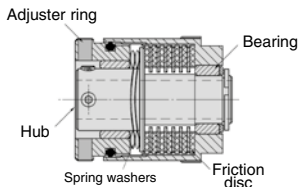
- Clutches interrupt rotation when load being transmitted exceeds preset limit.



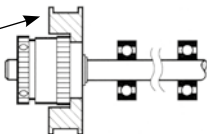
VT2 With set screw



VT4 With clamp fixing



Pulley (Or gear, etc...) bonded to register. Press fits not permissible.



### DISCOUNTS

Qty	1+	5+	10+	15+	20+	25+
Disc.	List	-15%	-20%	-25%	-30%	On request

Part number	ØA <small>+0.03 -0.00</small>	N° of friction discs	ØD	L	Screw	Heat dissipation at 20°C (Watts)	Max. frictional torque (Nm)	Moment of inertia (kgm <sup>2</sup> x 10 <sup>4</sup> )	Price each 1 to 4
<b>With set screw</b>									
VT2712-6	6	2	25,8	26,4	M3	7,0	0,53	242	✓ 65,60 €
VT2712-8	8	2	25,8	26,4	M3	7,0	0,53	242	✓ 65,60 €
VT2796-6	6	6	25,8	32,4	M3	8,6	1,32	312	✓ 77,75 €
VT2796-8	8	6	25,8	32,4	M3	8,6	1,32	312	✓ 77,75 €
<b>With locking jaw</b>									
VT4012-6	6	2	25,8	34,4	M3	7,0	0,53	317	✓ 73,97 €
VT4012-8	8	2	25,8	34,4	M3	7,0	0,53	317	- 73,97 €
VT4096-6	6	6	25,8	40,7	M3	8,6	1,32	381	✓ 85,04 €
VT4096-8	8	6	25,8	40,7	M3	8,6	1,32	381	✓ 85,04 €

\*Depending on availability - Dimensions in mm