

Retaining catch, single sided

VRC1

Indexed 4 x 90°

Adjustable retaining catch

- To be used for door locking, drawers and as handling aid.

- Material :

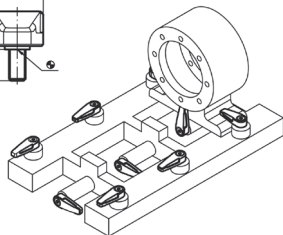
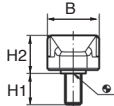
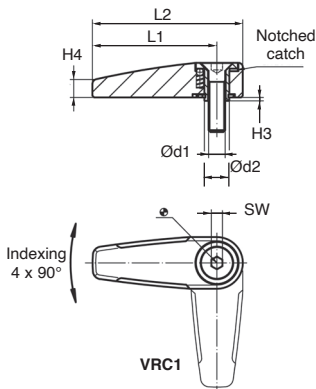
Body :

Die cast zinc, black similar to RAL 9005

Die cast zinc, silver similar to RAL 9006

Internal pieces : Sintered metal

Screw : A2 stainless steel (ISO 10642)



Typical application



DISCOUNTS

Qty	1+	6+	20+
Disc.	List	-10%	On request

Part number	Colour	Ød1	Ød2	L1	L2	B	H1	H2	H3	H4	SW	Weight (g)	Price each 1 to 5
VRC1-M6/A	Silver	M6	9	45	55	19,0	12	13,3	0,8	6,5	4	59	20,13 €
VRC1-M8/A	Silver	M8	14	65	78	25,2	14	15,8	0,8	9,0	5	136	25,18 €
VRC1-M6/N	Black	M6	9	45	55	19,0	12	13,3	0,8	6,5	4	59	20,13 €
VRC1-M8/N	Black	M8	14	65	78	25,2	14	15,8	0,8	9,0	5	136	25,18 €

*Depending on availability - Dimensions in mm

Retaining catch, dual sided

Indexed 4 x 90°

VRC2

Adjustable retaining catch

- To be used for door locking, drawers and as handling aid.

- Material :

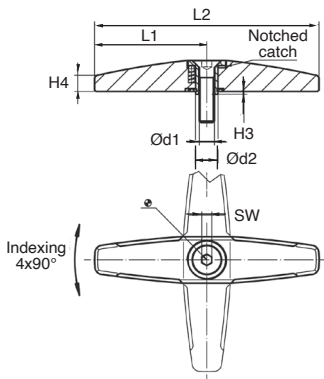
Body :

Die cast zinc, black similar to RAL 9005

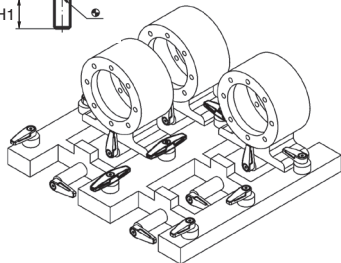
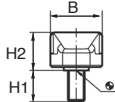
Die cast zinc, silver similar to RAL 9006

Internal pieces : Sintered metal

Screw : A2 stainless steel (ISO 10642)



VRC2



Typical application



DISCOUNTS

Qty	1+	6+	20+
Disc.	List	-10%	On request

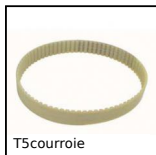
Part number	Colour	Ød1	Ød2	L1	L2	B	H1	H2	H3	H4	SW	Weight (g)	Price each 1 to 5
VRC2-M6/A	Silver	M6	9	45	90	19,0	12	13,3	0,8	6,5	4	93	22,53 €
VRC2-M8/A	Silver	M8	14	65	130	25,2	14	15,8	0,8	9,0	5	220	29,13 €
VRC2-M6/N	Black	M6	9	45	90	19,0	12	13,3	0,8	6,5	4	93	22,53 €
VRC2-M8/N	Black	M8	14	65	130	25,2	14	15,8	0,8	9,0	5	220	29,13 €

*Depending on availability - Dimensions in mm

Our other products



Connecting kits, XZ linking kit



T type timing belt, T5 Steel cored polyurethane



Arm with rotating handle, Square bore



Compact precision slide, from 1510 N to 10500 N



Linear bearing with inclined ball tracks, Heavy loads / -20° +200°



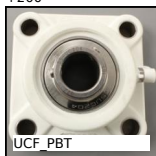
Linear roller slide, Rail - from 9410 N to 101000 N



Pad eye on mounting plate squarred, Stainless steel



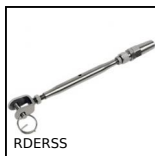
Stainless steel spur gear, Stainless steel 304L



Stainless steel/Polymer flanged bearing, Polymer and



Sealing brush strip, 1m length



Stainless steel manual rigging screw, Stainless steel -



Worm and wheel gear reducer, up to 540 Nm

Complementary products



Retaining clamp, single sided, Single sided