

Retaining catch, single sided

VRC1

Indexed 4 x 90°

Adjustable retaining catch

- To be used for door locking, drawers and as handling aid.

- Material :

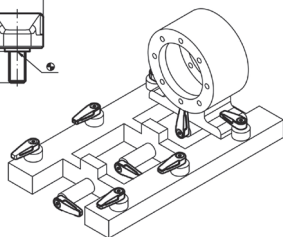
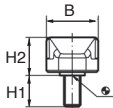
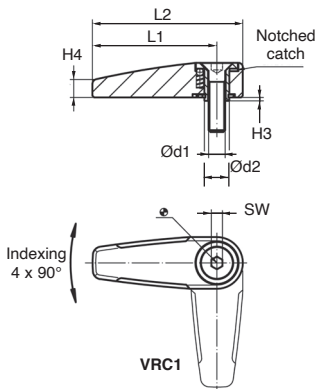
Body :

Die cast zinc, black similar to RAL 9005

Die cast zinc, silver similar to RAL 9006

Internal pieces : Sintered metal

Screw : A2 stainless steel (ISO 10642)



Typical application

IN STOCK*
Otherwise contact us

DISCOUNTS

Qty	1+	6+	20+
Disc.	List	-10%	On request

Part number	Colour	Ød1	Ød2	L1	L2	B	H1	H2	H3	H4	SW	Weight (g)	Price each 1 to 5
VRC1-M6/A	Silver	M6	9	45	55	19,0	12	13,3	0,8	6,5	4	59	20,13 €
VRC1-M8/A	Silver	M8	14	65	78	25,2	14	15,8	0,8	9,0	5	136	25,18 €
VRC1-M6/N	Black	M6	9	45	55	19,0	12	13,3	0,8	6,5	4	59	20,13 €
VRC1-M8/N	Black	M8	14	65	78	25,2	14	15,8	0,8	9,0	5	136	25,18 €

*Depending on availability - Dimensions in mm

Retaining catch, dual sided

Indexed 4 x 90°

VRC2

Adjustable retaining catch

- To be used for door locking, drawers and as handling aid.

- Material :

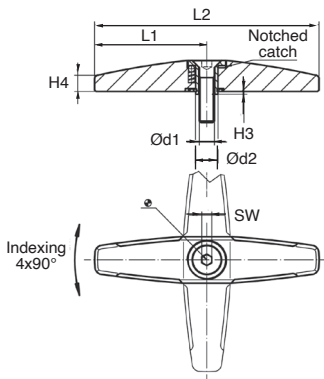
Body :

Die cast zinc, black similar to RAL 9005

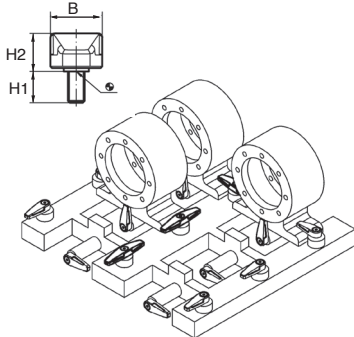
Die cast zinc, silver similar to RAL 9006

Internal pieces : Sintered metal

Screw : A2 stainless steel (ISO 10642)



VRC2



Typical application



DISCOUNTS

Qty	1+	6+	20+
Disc.	List	-10%	On request

Part number	Colour	Ød1	Ød2	L1	L2	B	H1	H2	H3	H4	SW	Weight (g)	Price each 1 to 5
VRC2-M6/A	Silver	M6	9	45	90	19,0	12	13,3	0,8	6,5	4	93	22,53 €
VRC2-M8/A	Silver	M8	14	65	130	25,2	14	15,8	0,8	9,0	5	220	29,13 €
VRC2-M6/N	Black	M6	9	45	90	19,0	12	13,3	0,8	6,5	4	93	22,53 €
VRC2-M8/N	Black	M8	14	65	130	25,2	14	15,8	0,8	9,0	5	220	29,13 €

*Depending on availability - Dimensions in mm

Our other products



PRF CHA D
Hinge and joint, Lift-off hinge



CHM75
Worm and wheel gear reducer, up to 298 Nm



gt64r
Rotating bent lever with spring, Increased fitting tolerances



MHQMEP
Arm with rotating handle, Square bore



CLR
Straight clevis, Straight clevis for use with a male clevis



SSDB
Stainless steel bevel gear, 2:1



AT5courroie
AT type timing belt, AT5 Steel cored polyurethane



FR
Steel thread inserts, Steel



CHAR
Spring hinge, screwed



GSA_A
Adjustable gas spring, Steel



PLM-SC
Magnetic stud with threaded hole, With



BGC
Oldham coupling, Clamp

Complementary products



VRC2
Retaining clamp, dual sided, Dual sided