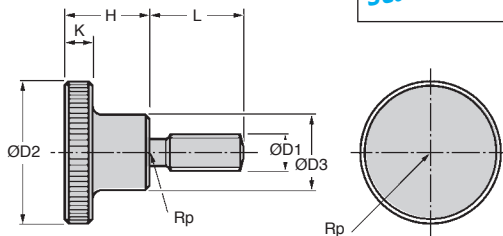


- **Material: Polished stainless steel 303**
- Operating elements
- Conforms to DIN 464
- ** These thumb screws are supplied with shaft threaded along the entire length (no groove)



DISCOUNTS

Qty	1+	6+	20+	40+	60+	101+
Disc.	List	-10%	-15%	-20%	-25%	On request

Part number	ØD1	ØD2	ØD3	H	K	L	Stock*	Price each 1 to 5
VMS4-10	M4	16	8	9,5	3,5	10	✓	2,55 €
VMS4-16	M4	16	8	9,5	3,5	16	✓	2,82 €
VMS4-20	M4	16	8	9,5	3,5	20**	✓	3,08 €
VMS5-10	M5	20	10	11,5	4,0	10	✓	3,14 €
VMS5-16	M5	20	10	11,5	4,0	16	✓	3,73 €
VMS5-20	M5	20	10	11,5	4,0	20**	✓	4,50 €
VMS6-10	M6	24	12	15,0	5,0	10	✓	6,75 €
VMS6-16	M6	24	12	15,0	5,0	16	✓	5,25 €
VMS6-20	M6	24	12	15,0	5,0	20	✓	9,50 €
VMS6-25	M6	24	12	15,0	5,0	25**	✓	7,71 €
VMS8-16	M8	30	16	18,0	6,0	16	✓	12,01 €
VMS8-20	M8	30	16	18,0	6,0	20	✓	13,02 €
VMS8-25	M8	30	16	18,0	6,0	25	✓	12,36 €
VMS10-20	M10	36	20	23,0	8,0	20	✓	18,28 €
VMS10-25	M10	36	20	23,0	8,0	25	✓	20,57 €

*Depending on availability - Dimensions in mm

Our other products



PRF1932

Standard aluminium profile, 19 x 32 mm



UCF PBT

Stainless steel/Polymer flanged bearing, Polymer and stainless steel



UTKpwrr

V shaped channel UtiliTrak®, V rail



RPP

Connecting plate for RPP type timing belts, RRP5



M0

Worm and wheel set, Bronze



GDR880

Straight track for slat top chain, Ranges 880 and 881



NKIA

Combined bearing with inner ring, Axial load in one direction



PT820

Drive sprocket for slat top chain, Ranges 820 and 815



P30

Worm and wheel gear reducer, up to 8.80



RPCtc

Swivel castor with central hole, Steel -



SRG

Adjustable latch clamp with strike



AZY

Cylindrical elasto mount, Steel

Complementary products



EMS

Stainless steel knurled thumb nut, Knurled