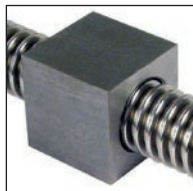
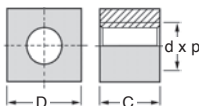


## 1 trapezoidal right or left-hand thread VKM VKMLH

- Right or left hand thread
- Thread conforms to NFE 03.616
- Material: Steel S300Pb
- Machined nut
- Thread tolerance: 7H



### Accessories

- LFM steel leadscrew or  
LSM stainless steel leadscrew

### DISCOUNTS <sup>A</sup>

Qty	1+	10+	20+	40+
Disc.	List	-30%	-40%	On request

### DISCOUNTS <sup>B</sup>

Qté	1+	5+	10+
Rem.	List	-5%	On request

Part number	Ød	Pitch P	D	C	Weight (kg)	Stock*	Price each	
							1 to 9	40 to 59**
<b>Right-hand thread</b>								
VKM102	10	2	17	15	0,027	✓	A 2,94 €	A 1,77 €
VKM123	12	3	25	18	0,076	✓	A 5,09 €	A 3,06 €
VKM143	14	3	25	20	0,079	✓	A 6,00 €	A 3,60 €
VKM164	16	4	28	24	0,119	✓	A 6,41 €	A 3,85 €
VKM184	18	4	30	28	0,154	✓	A 7,53 €	A 4,52 €
VKM204	20	4	35	30	0,259	✓	A 8,50 €	A 5,10 €
VKM225	22	5	35	33	0,240	✓	A 10,56 €	A 6,33 €
VKM245	24	5	40	36	0,354	✓	A 11,88 €	A 7,13 €
VKM285	28	5	45	42	0,506	✓	A 14,94 €	A 8,96 €
VKM306	30	6	45	45	0,513	✓	A 17,38 €	A 10,42 €
VKM326	32	6	55	48	0,891	✓	A 25,61 €	A 15,37 €
VKM366	36	6	60	54	1,163	✓	B 23,01 €	B On request
VKM407	40	7	60	60	1,216	✓	B 28,75 €	B On request
VKM447	44	7	65	66	1,538	-	B 44,42 €	B On request
<b>Left-hand thread</b>								
VKM102/LH	10	2	17	15	0,027	✓	A 4,73 €	A 2,84 €
VKM123/LH	12	3	25	18	0,076	✓	A 6,23 €	A 3,74 €
VKM143/LH	14	3	25	20	0,079	✓	A 6,91 €	A 4,15 €
VKM164/LH	16	4	28	24	0,119	✓	A 7,57 €	A 4,55 €
VKM184/LH	18	4	30	28	0,154	✓	A 9,12 €	A 5,47 €
VKM204/LH	20	4	35	30	0,259	✓	A 10,25 €	A 6,15 €
VKM225/LH	22	5	35	33	0,240	✓	A 12,13 €	A 7,28 €
VKM245/LH	24	5	40	36	0,354	✓	A 13,60 €	A 8,16 €
VKM285/LH	28	5	45	42	0,506	-	A 17,38 €	A 10,42 €
VKM306/LH	30	6	45	45	0,513	-	A 20,98 €	A 12,59 €
VKM326/LH	32	6	55	48	0,891	-	A 30,17 €	A 18,10 €
VKM366/LH	36	6	60	54	1,163	-	B 27,37 €	B On request
VKM407/LH	40	7	60	60	1,216	-	B 35,28 €	B On request
VKM447/LH	44	7	65	66	1,538	-	B 53,32 €	B On request

\*Depending on availability - Dimensions in mm

\*\* refer to discounts

## Our other products



LSAG

Precision linear rotary ball spline, Rail - from 514 N to 15386 N



SLBW

Indexing plunger, weldable, Weldable - Steel



ZB

Shaft for linear guides, Hardened ground stainless steel



MCL

Cylindrical threaded sleeve, Cylindrical - steel



RIMtce

Locking castor, with central hole



FAD

Threaded swivel feet, Swivel feet without anti-slip plate



NPTF20

Fixed tube carrier, Fixed Ø10 to Ø14



SLB

Indexing plunger, stainless steel



V3RA\_PT

3-spoked handwheel with handle, Polyamide



PAV

Fixed anti-vibration foot mount, Vibration-dampening



RJA11\_27

Sealing strip, Not clipping



MACss

Stainless steel carabiner, Stainless steel

## Complementary products



LFM

Steel leadscrew, Medium carbon steel - 1 thread



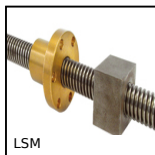
LSM

Stainless steel 316L leadscrew, Stainless steel - 1 thread



LFM

Steel leadscrew, Medium carbon steel - 1 thread



LSM

Stainless steel 316L leadscrew, Stainless steel - 1 thread