

Small 6 lobe threaded handle



VB

Black Duroplast blind insert

- Operating element
- Materials:
Black phenolic Duroplast
Insert: brass or stainless steel

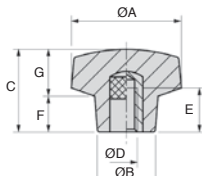
Advantages

- Easy grip
- Temperature resistant
- Good chemical resistance
- Easier to clean than technopolymer
- In machining applications, less likely to retain swarf

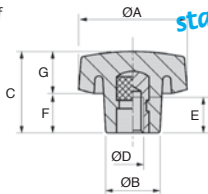
Good
resistance



brass or
stainless steel
insert



VB20-VB50



DISCOUNTS VB60-VB70

Qty	1+	10+	20+	50+	100+	200+
Disc.	List	-5%	-10%	-15%	-20%	On request

Part number	ØA	ØB	C	ØD	E	F	G	Weight (g)	Price each 1 to 9
Brass insert									
VB20-M4	20	13	15	M4	9	7	8	5	2,95 €
VB20-M5	20	13	15	M5	9	7	8	5	3,07 €
VB20-M6	20	13	15	M6	9	7	8	5	3,15 €
VB30-M6	30	17	24	M6	9	11	13	15	3,88 €
VB30-M8	30	17	24	M8	15	11	13	17	3,98 €
VB40-M8	40	21	28	M8	15	12	16	34	4,82 €
VB40-M10	40	21	28	M10	16	12	16	36	4,93 €
VB50-M8	50	25	33	M8	15	13	20	54	5,88 €
VB50-M10	50	25	33	M10	16	13	20	56	5,88 €
VB50-M12	50	25	33	M12	18	13	20	58	6,21 €
VB60-M12	60	28	35	M12	18	15	20	70	7,71 €
VB70-M12	70	32	42	M12	18	21	21	95	9,51 €
VB70-M14	70	32	42	M14	20	21	21	100	10,57 €
VB70-M16	70	32	42	M16	20	21	21	102	10,90 €
Stainless steel insert									
VB20-M5/SS	20	13	15	M5	9	7	8	5	6,03 €
VB20-M6/SS	20	13	15	M6	9	7	8	5	6,32 €
VB30-M6/SS	30	17	24	M6	9	11	13	15	8,33 €
VB40-M8/SS	40	21	28	M8	15	12	16	33	9,58 €
VB50-M8/SS	50	25	33	M8	15	13	20	54	11,37 €
VB50-M10/SS	50	25	33	M10	16	13	20	55	16,24 €

Dimensions in mm

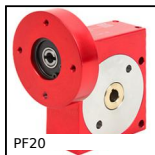
Our other products



MSP3815
Masterplate®
glueable insert
rectangular,
rectangular with



CHT
Asynchronous AC
Motor 1.1 to 1.85kW,
1.1 to 1.85kW



PF20
Worm and wheel gear
reducer, up to 5 Nm



FBL4004_K32
Brush strip per metre,
Black striated
polypropylene (PP)



LRM
Trapezoidal bronze
nut, Bronze - 1 thread



T10_21N1F
T type timing pulley,
Economy range - T10
moulded plastic
(nylon)



BDPR
Holding arm, Rigid



VMS
Stainless steel knurled
thumb screw, Knurled



ZG4
Plastic spur gear,
Machined plastic



BH02
Single housed bearing
assembly, Bearing



BAP25
Plastic clamping
collar, Ø25 - Ø40



GLT3-46A
Telescopic drawer
with damper,

Complementary products



GLB
Small 6 lobe threaded
handle - female,
Technopolymer -
Brass



VBFP
Small 6 lobe threaded
handle - female,
Duroplast - Brass



VTLM
3 lobed handle,
Polyamide - Steel



VTLF
3 lobed handle,
Polyamide - Brass