



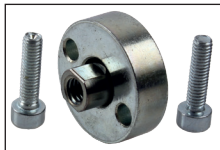
# Actuator guide kit

## Coupling for threaded cylinder end

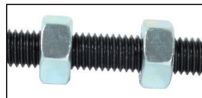
**UGAC**  
**UGET**

**UGAC:** Connects the threaded end of the actuator to the piece to be moved

- In line flexible coupling, allows radial movement (E) of the cylinder end
- Material: Zinc plated steel



**UGAC**



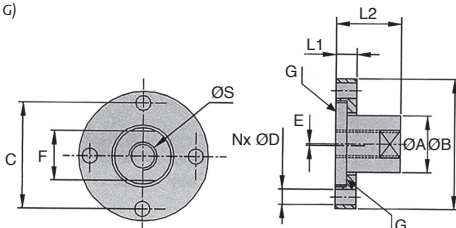
**UGET**

### Info.

- Grease the 2 surfaces (marked G) during assembly

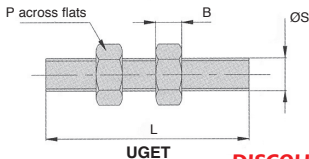
**UGET:** For connecting the threaded end of a short stroke actuator to the UGAC coupling

- Material: Blackened steel, zinc plated steel



### Info.

- If the actuator does not complete the stroke, check the tightness of the threads



**UGET**

### DISCOUNTS

Qty	1+	2+	4+
Disc.	List	-5%	On request

### Coupling for cylinder end

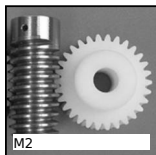
Part number	ØS	ØA	ØB	C	ØD	L1	L2	E	F	N	Weight (kg)	Price each
UGAC-6	M6	9	26	19	4,5	8	14	0,5	8	2	0,02	19,18 €
UGAC-8	M8	16	38	31	5,5	8	22	1,0	13	2	0,08	22,35 €
UGAC-10F	M10x1,25	16	38	31	5,5	8	22	1,0	13	2	0,08	22,35 €
UGAC-12F	M12x1,25	24	55	45	6,5	9	28	1,0	21	4	0,19	28,11 €
UGAC-16F	M16x1,5	24	55	45	6,5	9	28	1,0	21	4	0,19	28,11 €
UGAC-20F	M20x1,5	29	70	56	8,5	10	35	1,5	24	4	0,31	35,75 €
UGAC-27F	M27x2	39	100	76	13,0	16	43	1,5	32	4	0,90	65,66 €

### Connector for threaded actuator rod

Part number	ØS	L	B	P	Price each
UGET-6	M6	40	4,8	10	3,62 €
UGET-8	M8	60	6,4	13	3,99 €

Dimensions in mm

## Our other products



M2

Worm and wheel set,  
Machined plastic  
(delrin)



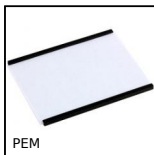
SSDB

Stainless steel bevel  
gear, 2:1



BOX-TOR-B

Box set of Nitrile O-  
rings in nitrile, 20.38 x  
1.78mm to 50.16 x  
5.34



PEM

Magnetic label holder,  
Flexible magnet  
100mm



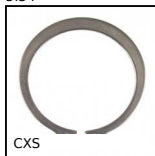
G0

Steel spur gear, Steel  
20NC2



ACLBT5

Closing system for  
aluminium profile,  
Spacer for spherical  
ended stop



CXS

External circlip  
DIN471, external DIN  
471



GSI\_A

Stainless steel  
adjustable gas spring,  
Stainless steel



GMK17\_BR

Clamp for guiding  
profile, Rounded only  
- single



NPTF20

Spacer for tube  
carrier, Fixing  
accessory Ø10 to Ø14



KH

Linear bearing, Light



HTD5M\_25

HTD Heavy duty  
timing pulley, HTD5  
Steel

## Complementary products



UGPC

Actuator guide kit,  
Short bearing



UGCG

Actuator guide kit,  
Long housing