

Stainless/Polymer pillow block bearing

UCP_{PBT}

2 mounting points

- Self aligning bearing with 2 mounting points
- Interchangeable with cast iron units
- Grease applicator supplied
- Working temperature: -35°C to +102°C
- Materials:
 - Bearing: Stainless steel AISI 440C
 - Housing: PBT polymer
 - Grease: suitable for food industry



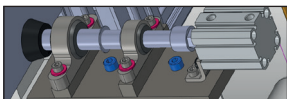
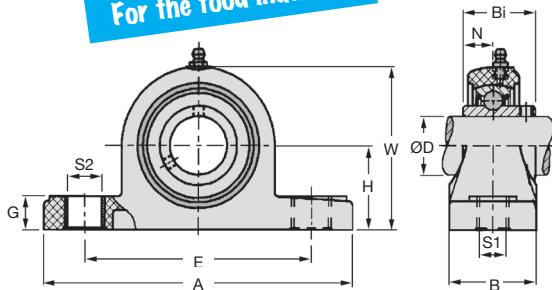
Colour

- UCP/PBT/G: green
- UCP/PBT/W: white

Accessory

- Protective cover

For the food industry



Typical application

DISCOUNTS

Qty	1+	10+	26+	25+
Disc.	List	-10%	-20%	On request

Part number	ØD	H	A	E	B	S1	S2	G	W	Bi	N	Stock*	Price each 1 to 9
UCP201/PBT/G	12	33,3	127,0	95	38	11	14	14,2	65,5	31,0	12,7	✓	90,67 €
UCP202/PBT/G	15	33,3	127,0	95	38	11	14	14,2	65,5	31,0	12,7	✓	86,27 €
UCP203/PBT/G	17	33,3	127,0	95	38	11	14	14,2	65,5	31,0	12,7	✓	82,15 €
UCP204/PBT/W	20	33,3	127,0	95	38	11	14	14,2	65,5	31,0	12,7	✓	22,20 €
UCP205/PBT/W	25	36,5	140,5	105	38	11	14	14,2	71,0	34,0	14,3	✓	26,77 €
UCP206/PBT/W	30	42,9	163,0	119	46	14	18	17,8	83,0	38,1	15,9	✓	38,84 €
UCP207/PBT/W	35	47,6	168,0	128	48	14	18	18,0	94,5	42,9	17,5	✓	54,44 €
UCP208/PBT/W	40	49,2	184,0	137	54	14	18	19,5	98,0	49,2	19,0	-	62,76 €

*Depending on availability - Dimensions in mm

Our other products



BFA
Shaft locking circlip, E clip



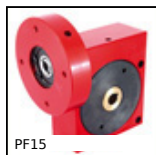
MURP1945
Mini profile-mounted adjusting unit, 19x45mm



FR
Thread repair inserts, Steel



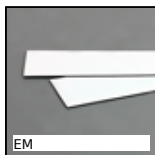
NSU
Sensor support, Universal 90° support clamp



PF15
Worm and wheel gearbox, up to 3,75 Nm



PSG25
Spur gear - precision range, Stainless steel 303



EM
Magnetic label, Flexible magnet



FF20
Offset spur gear reducer, from 5.80 to 23 Nm



ZDB
Machined plastic bevel gear (delrin), 2:1



VTLF
3 lobed handle, Polyamide - Brass

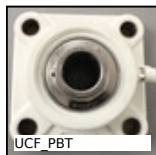


CLQassortiment
Bearing - accessories, Assorted feeler strips



PCLA_T
Clamping lever - male, Plastic

Complementary products



UCF_PBT
Flange bearing, Polymer and stainless steel



BPPss
Pillow block, Stainless steel



UCP_PBT
Pillow block, Polymer and stainless steel