



Stainless steel pillow block bearing

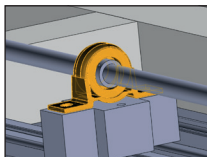
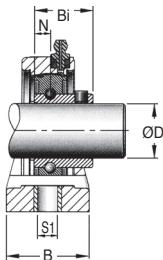
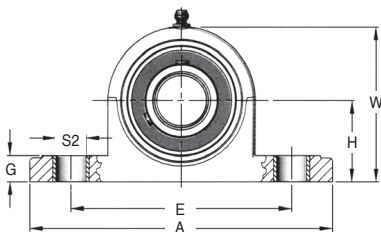
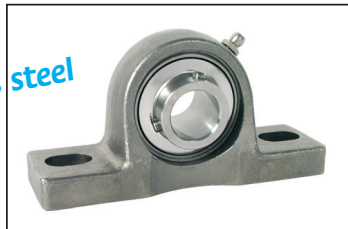
2 mounting points

UCPss

- Self aligning bearing with 2 mounting points
- Interchangeable with cast iron units
- Working temperature range: until +140°C
- Materials:
 Bearing: stainless steel
 Housing: stainless steel

stainless steel

For hostile environments



Typical application

DISCOUNTS

Qty	1+	10+	26+
Disc.	List -10%	On request	

Part number	ØD	H	A	E	B	S1	S2	G	W	Bi	N	Weight (kg)	Price each
													Stock*
UCP204/SS	20	33,3	127	95,0	38	13,0	19,0	13,0	65,0	31,0	12,7	0,70	✓ 53,12 €
UCP205/SS	25	36,5	140	105,0	38	13,0	19,0	15,0	71,0	34,1	14,3	0,85	✓ 58,67 €
UCP206/SS	30	42,9	165	121,0	48	17,0	20,0	17,0	84,0	38,1	15,9	1,20	✓ 82,74 €
UCP207/SS	35	47,6	167	127,0	48	17,0	19,0	19,0	93,0	42,9	17,5	1,70	✓ 116,28 €
UCP208/SS	40	49,2	184	137,0	54	17,0	20,0	20,0	98,0	49,2	19,0	2,10	✓ 134,80 €

*Depending on availability - Dimensions in mm

Our other products



DOMI_MD

Domino rotary table,
55/1



GPB

Threaded spherical
knob, With brass
insert



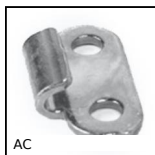
CHA35

Hinge for aluminium
profile, Hinge



CHALss

Piano hinge, Stainless
steel



AC

Strike for toggle latch,
12mm



BOX-TOR-INCH

Box set of Nitrile O-rings
in inch NBR90Sh
A, For fasteners and
fitt...



H0

Crossed helical gear
crossed axis at 90°,
Steel 20NCD2



UCFL_PBT

Stainless
steel/Polymer flanged
bearing, Polymer and
stainless steel



RESC

Retractable castor for
aluminium profile,
Retractable castor



HCV

V-rail guidance
Simple Select®
system, on rail



SER69K-CLE

Quarter turn latch for
the food industry,
Stainless steel key



PRF-SCREEN-4

Screen support,
Support with 4 axes of
rotation

Complementary products



UCF_SS

Stainless steel flanged
bearing, Stainless
steel



UCFL_SS

Stainless steel flanged
bearing, Stainless
steel



BPPss

Pressed stainless
steel pillow block,
Stainless steel