

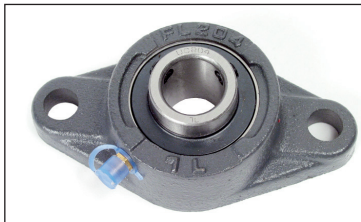
Cast iron flanged bearing



UCFL

2 mounting points

- Self-aligning bearing
- Spherical external ring
- Working temperature range: -30 to +100°C
- Material:
 - Bearing: steel
 - Housing: cast iron
- Maximum speed depends on the shaft tolerance

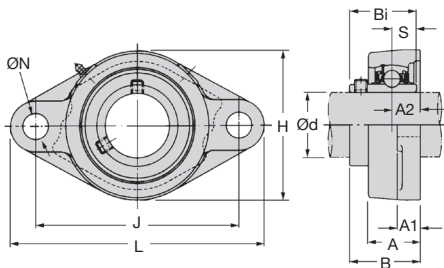


Use

- Mounting a single bearing

Option

- Version suitable for the food industry



| Part number | Load (kN) | | Speed/tolerance (rpm) | | | |
|-------------|-----------|--------|-----------------------|------|------|------|
| | dynamic | static | j7 | h7 | h8 | h9 |
| UCFL204 | 12,2 | 6,35 | 6700 | 4900 | 3500 | 1250 |
| UCFL205 | 13,3 | 7,50 | 5600 | 4100 | 2900 | 1050 |
| UCFL206 | 18,6 | 10,80 | 4700 | 3400 | 2400 | 880 |
| UCFL208 | 27,7 | 17,00 | 3600 | 2600 | 1900 | 660 |
| UCFL212 | 50,0 | 34,50 | 2400 | 1600 | 1250 | 460 |

DISCOUNTS

| Qty | 1+ | 6+ | 10+ | 20+ |
|-------|------|------|------|------------|
| Disc. | List | -20% | -40% | On request |

| Part number | Bore | | | | A | ØN | H | B | Bi | S | Bolt size | Price each | | |
|-------------|------|-----|-----|----|----|------|----|-----|------|------|-----------|------------|--------|---------|
| | Ød | L | J | A2 | | | | | | | | | Stock* | 1 to 5 |
| UCFL204 | 20 | 113 | 90 | 5 | 11 | 25,5 | 12 | 60 | 33,3 | 31,0 | 12,7 | M10 | ✓ | 13,70 € |
| UCFL205 | 25 | 130 | 99 | 16 | 13 | 27,0 | 16 | 68 | 35,8 | 34,1 | 14,3 | M14 | ✓ | 14,75 € |
| UCFL206 | 30 | 148 | 117 | 18 | 13 | 31,0 | 16 | 80 | 40,2 | 38,1 | 15,9 | M14 | ✓ | 18,51 € |
| UCFL208 | 40 | 175 | 144 | 21 | 14 | 36,0 | 16 | 100 | 51,2 | 49,2 | 19,0 | M14 | ✓ | 27,70 € |
| UCFL212 | 60 | 250 | 202 | 29 | 18 | 48,0 | 23 | 140 | 68,7 | 65,1 | 25,4 | M20 | - | 62,45 € |

*Depending on availability - Dimensions in mm

HPC

WEB
04/2020

www.hpceurope.com

Tél: 0 825 88 5000 Service 0,15€/min + prix appel

Our other products



ADL_F

Female eye bolt conforms to DIN582, Steel



PFc

Fixed rubber levelling foot, Levelling support for small parts



PPC_{ss}

Pad eye on mounting plate squarred, Stainless steel



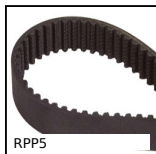
PF20

Worm and wheel gear reducer, up to 5 Nm



CLG3

Moulded plastic spur gear, Moulded plastic (nylon)



RPP5

RPP heavy duty timing belt, RPP5



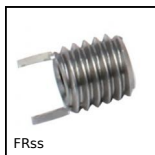
GCL

Linear ball slide Eco Range, economy range



UGH20

H Type Guide units, For Ø20 actuators



FR_{ss}

Stainless steel thread inserts, Stainless steel



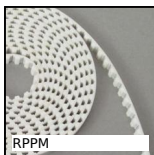
RHTpl_{ss}

High Temperature Castor, up to 200kg



D19 D29

Compression springs in metre length stainless steel, by the



RPPM

RPP type belt per metre, RPP14 Steel cored polyurethane

Complementary products



UCP

Cast iron pillow block bearing, Cast iron



UCF

Cast iron flange bearing unit, Cast iron



SBF

Sealed flange bearing unit for Food Industry, cover



SBF

Sealed flange bearing unit for Food Industry, cover