

Swivel castor for aluminium profile

For loads up to 120kg

TPEPDB

- Swivel castor with brake for use with aluminium profile 40/45mm such as PRF4545
- Material:
 - Plate: powder-coated steel sheet, natural aluminium colour
 - Wheel: grey polypropylene (RAL 7001)

Advantages

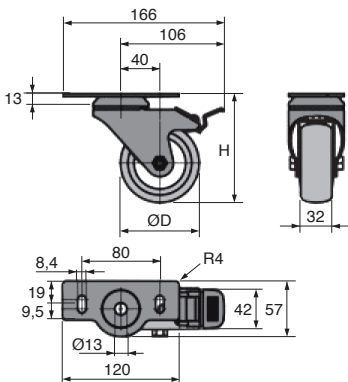
- Silent
- Will not mark floor
- Low rolling resistance

Info

- Fixing screws not supplied (See PRF-ECL-M8 and BHC8/CHC8 screws)



Typical application



REMISES

Qté	1+	10+	30+
Rem. Prix		-5%	Sur demande

Part number	ØD	H	Maximum load (N)	Weight (g)	Price each 1 to 9
TPE80/PDB	80	111	1000	710	33,46 €
TPE100/PDB	100	136	1100	787	36,53 €
TPE125/PDB	125	161	1200	873	38,71 €

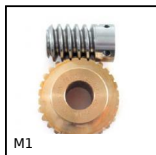
Dimensions in mm

Our other products



M1

Worm and wheel set,
Non hardened steel



M1

Worm and wheel set,
Bronze



RLR

Roll-Ring® chain
tensioner, Roll-Ring®
Self-adjusting



H1

Crossed helical gear
crossed axis at 90°,
Steel 20NCD2



STU

Stroke rotary bushing,
Steel



BMM

Knurled knob - male,
Knurled



PRF_ECL

Nut for aluminium
profile, Stainless steel
square nut with tab



PLC_PLT

Magnetic stud with
central hole, With
central hole



SH2

Parallel axis helical
gear, Steel 20NCD2



SFWR

End support, Surface
mounting



PAP

Handle for aluminium
profile, Ergonomic
handle



CHAC4040NP

Square hinge with
riveted pin, not
drilled, Square with
riveted pin,...

Complementary products



TPEF

Castor for aluminium
profile, Fixed



PRF4545

Standard aluminium
profile, 45 x 45 mm



PRF_ECL

Nut for aluminium
profile, Steel square
nut with tab



CHC

Socket headed screw,
Steel class 12.19