

Fixed castor for aluminium profile

TPEF

For loads up to 120kg

- Castor for aluminium profil 40/45mm
such as PRF4545

- Materials:

Plate: powder-coated steel sheet,
natural aluminium colour

Wheel: grey polypropylene (RAL 7001)

Advantages

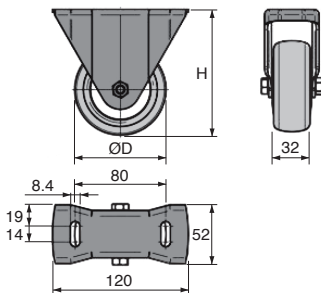
- Silent
- Will not mark floor
- Low rolling resistance

Info

- Fixing screws not supplied
(See PRF-ECL-M8 and BHC8/CHC8 screws)



Typical application



DISCOUNTS

Qty	1+	10+	30+
Disc.	List	-5%	On request

Part number	ØD	H	Maximum load (N)	Weight (g)	Price each 1 to 9
TPE80/F	80	111	1000	484	22.58 €
TPE100/F	100	136	1100	577	27.13 €
TPE125/F	125	161	1200	675	30.39 €

Dimensions in mm

HPC

WEB
04/2020

www.hpceurope.com

Tél: 0 825 88 5000 Service 0,15 €/min + prix appel

Our other products



KPK-AR

Linear bearing with inclined ball tracks, Heavy loads / -20° $+200^{\circ}$



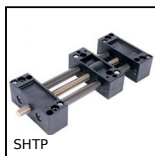
AXTR

Axle for tensioner pulley, Shaft



TFR

Rigid manual tensioner, Fixed



SHTP

Drylin® Linear table, Economy range



CHB

Worm and wheel gear reducer, up to 41 Nm



BABreceptacle

Ball pin socket, Socket



H2

Crossed helical gear crossed axis at 90° , Steel 20NCD2



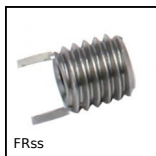
M1

Worm and wheel set, Hardened steel



GALRUB

60mm rubber wheel for conveyor belt, Rubber



FRss

Stainless steel thread inserts, Stainless steel



ERC

Quick fitting cable terminal, Fork



PLM-C

Cylindrical holding magnets, Cylindrical holding magnet

Complementary products



TPEpbd

Castor for aluminium profile, Swivel with brake



PRF4545

Standard aluminium profile, 45 x 45 mm



PRF_ECL

Nut for aluminium profile, Steel square nut with tab



BHC

Socket head button screw, Stainless steel A2