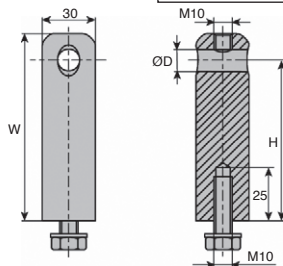


- For guiding profile
- Materials:
Body: stainless steel 304
Nut/washer: stainless steel

stainless steel



Typical application



DISCOUNTS

Qty.	1+	10+	20+
Disc.	List	-5%	On request

Part number	ØD	For Axis	H	W	Weight (kg)	Price each 1 to 9
TOL12-40/SS	12,5	APB12	40	55	0,28	27,48 €
TOL12-60/SS	12,5	APB12	60	75	0,38	33,57 €
TOL12-90/SS	12,5	APB12	90	105	0,55	36,86 €
TOL12-130/SS	12,5	APB12	130	145	0,77	49,17 €
TOL14-40/SS	14,5	APB14	40	56	0,28	49,17 €
TOL14-60/SS	14,5	APB14	60	76	0,38	27,48 €
TOL14-90/SS	14,5	APB14	90	106	0,55	31,79 €
TOL14-130/SS	14,5	APB14	130	146	0,77	35,09 €
TOL16-40/SS	16,5	APB16	40	57	0,28	49,17 €
TOL16-60/SS	16,5	APB16	60	77	0,38	27,48 €
TOL16-90/SS	16,5	APB16	90	107	0,55	36,86 €
TOL16-130/SS	16,5	APB16	130	147	0,77	49,17 €

*Depending on availability - Dimensions in mm

Our other products



CHAFR

Adjustable friction hinges, Friction



PITA

Locking bolt, with T handle



AHEX

Hexagonal shaft, Hexagonal shaft



PPD

Indexing plunger for sheets, For sheet metal



CHMR50

Worm and wheel gear reducer, up to 107 Nm



RESC

Retractable castor for aluminium profile, Retractable castor



PR65C

Half-articulated foot Ø 65, Ø 65



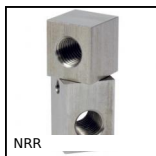
SSG1

Stainless steel spur gear, Stainless steel 304L



PRF4590

Standard aluminium profile, 45 x 90 mm



NRR

Adjustable support clamp, Adjustable



RHTtcss

High Temperature Castor, up to 200kg



WJUM10

Drylin® W bearing block, Slide

Complementary products



TOC

Short swivel head, Short



APB_F

Adjusting rod for clamp - Male, Threaded



APB_T

Adjusting rod for clamp - Female, Bored



RAG

Roller guide, Roller guide