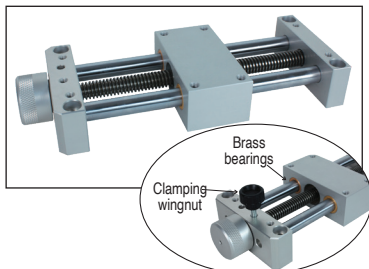


TBE10

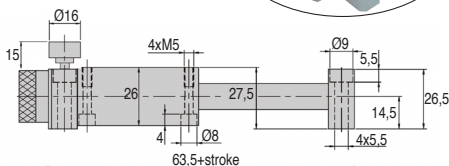
Max carried payload 1kg

- Leadscrew table for manual use
- Right hand trapezoidal leadscrew TR10x2
- Guided by 2 shaft in steel on 4 brass bearings
- Axial accuracy < 0,20mm
- With clamping wingnut and grip knob
- Materials:
Anodised aluminium and steel
- Working T° : from +5°C to +80°C

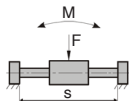


Accessories

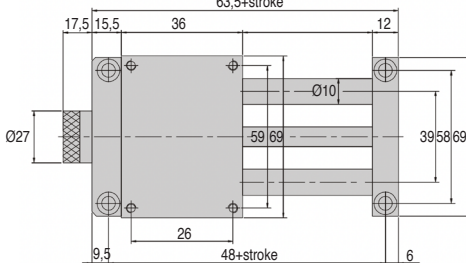
- Base plate with ruler TBE-BASE



Admissible payload



$$C = P_{(N)} \times r_{(m)}$$



	Static	Dynamic
F _{max} (daN)	10	2,5
C _{max} (Nm)	4	1
M _{max} (Nm)	5	1

(40mm < r < 100mm)

DISCOUNTS

Qty	1+	2+	3+
Disc.	List	-10%	On request

Part number	Stroke (mm)	Max carried payload (kg)	Weight (kg)	Stock*	Price each
TBE10-50	50	1	0,51	-	241,34 €
TBE10-100	100	1	0,59	-	243,73 €

*Depending on availability - Dimensions in mm

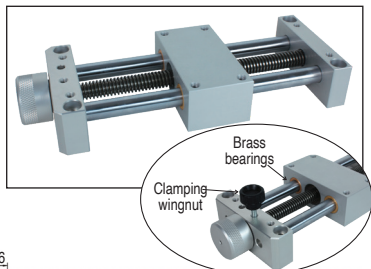


Economic Mini-table with trapezoidal leadscrew

Max carried payload 2kg

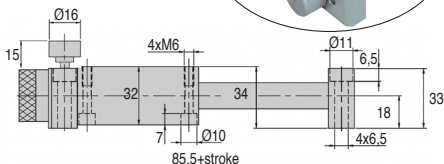
TBE12

- Leadscrew table for manual use
- Right hand trapezoidal leadscrew TR10x2
- Guided by 2 shaft in steel on 4 brass bearings
- Axial accuracy < 0,20mm
- With clamping wingnut and grip knob
- Materials:
Anodised aluminium and steel
- Working T° : from +5°C to +80°C

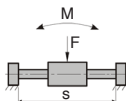


Accessories

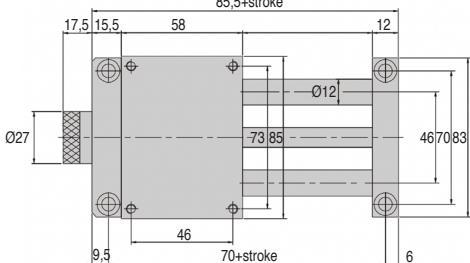
- Base plate with ruler **TBE-BASE**



Admissible payload



$$C = P(N) \times r(m)$$



	Static	Dynamic
F _{max} (daN)	20	5
C _{max} (Nm)	8	2
M _{max} (Nm)	10	2

(50mm < r < 150mm)

DISCOUNTS

Qty	1+	2+	3+
Disc.	List -10%	On request	On request

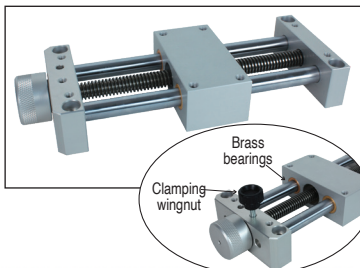
Part number	Stroke (mm)	Max carried payload (kg)	Weight (kg)	Max carried payload	
				Stock*	Price each
TBE12-50	50	2	0,91	-	272,82 €
TBE12-100	100	2	1,02	-	275,79 €
TBE12-150	150	2	1,13	-	278,77 €
TBE12-200	200	2	1,24	-	281,75 €

*Depending on availability - Dimensions in mm

TBE16

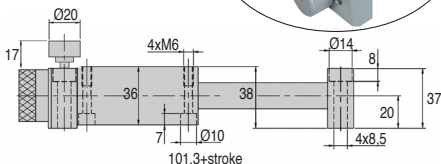
Max carried payload 5kg

- Leadscrew table for manual use
- Right hand trapezoidal leadscrew TR12x3
- Guided by 2 shaft in steel on 4 brass bearings
- Axial accuracy < 0,20mm
- With clamping wingnut and grip knob
- Materials:
Anodised aluminium and steel
- Working T° : from +5°C to +80°C

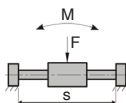


Accessories

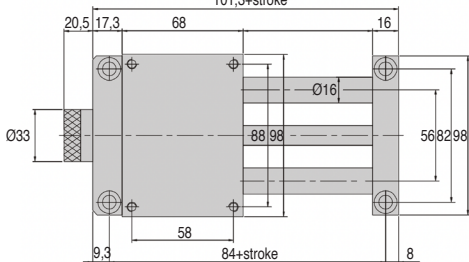
- Base plate with ruler TBE-BASE



Admissible payload



$$C = P_{(N)} \times r_{(m)}$$



	Static	Dynamic
F _{max} (daN)	40	12
C _{max} (Nm)	17	4
M _{max} (Nm)	20	5

(60mm < r < 200mm)

DISCOUNTS

Qty	1+	2+	3+
Disc.	List -10%	On request	

Part number	Stroke (mm)	Max carried payload (kg)	Weight (kg)	Max carried payload	
				Stock*	Price each
TBE16-50	50	5	1,53	-	300,14 €
TBE16-100	100	5	1,71	-	303,71 €
TBE16-150	150	5	1,89	-	307,27 €
TBE16-200	200	5	2,07	-	310,83 €

*Depending on availability - Dimensions in mm

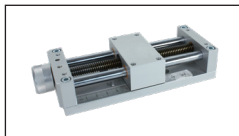
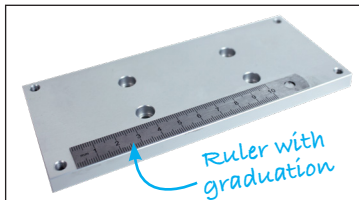


Base plate for **economic** mini-table

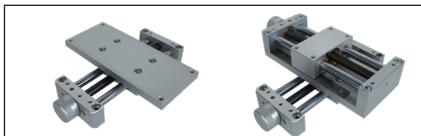
Allows X-Y cross tables

TBEBASE

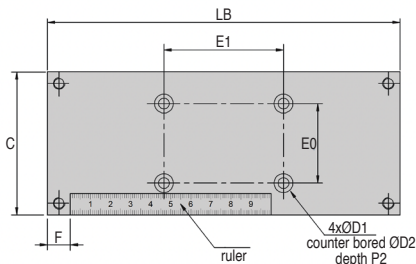
- **Base plate with ruler**
- To be screwed under the end supports
- Allows mounting in XY cross tables thanks to counterbored holes
- Ruler with graduation in mm
- Delivered with 8 fixing screws
- Material:
 - Plate Anodised aluminium
 - Stainless steel ruler
 - Zinc plated fixing screws



Simple assembly



Cross tables assembly



DISCOUNTS

Qty	1+	2+	3+
Disc.	List -10%	On request	

Part number	For table	Stroke (mm)	C	HB	LB	E0	E1	F	ØD1	ØD2	P2	Weight (kg)	Stock ¹	Price each
TBE10-50/BASE	TBE10	50	69	9,0	110	26	59	12	5,2	9	5,0	0,20	-	54,92 €
TBE10-100/BASE	TBE10	100	69	9,0	160	26	59	12	5,2	9	5,0	0,28	-	62,29 €
TBE12-50/BASE	TBE12	50	83	9,5	132	46	73	12	6,5	11	6,5	0,30	-	74,69 €
TBE12-100/BASE	TBE12	100	83	9,5	182	46	73	12	6,5	11	6,5	0,40	-	80,64 €
TBE12-150/BASE	TBE12	150	83	9,5	232	46	73	12	6,5	11	6,5	0,50	-	86,82 €
TBE12-200/BASE	TBE12	200	83	9,5	282	46	73	12	6,5	11	6,5	0,60	-	92,92 €
TBE16-50/BASE	TBE16	50	98	11,5	150	58	88	16	6,5	11	6,5	0,47	-	82,30 €
TBE16-100/BASE	TBE16	100	98	11,5	200	58	88	16	6,5	11	6,5	0,62	-	90,79 €
TBE16-150/BASE	TBE16	150	98	11,5	250	58	88	16	6,5	11	6,5	0,77	-	99,16 €
TBE16-200/BASE	TBE16	200	98	11,5	300	58	88	16	6,5	11	6,5	0,92	-	107,48 €

¹Depending on availability - Dimensions in mm

Our other products



SVG

Adjustable latch clamp with strike plate, Stroke from 174mm to 190mm



RHTtcss

High Temperature Castor, up to 200kg



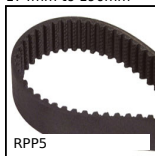
DER63

Stainless steel AC asynchronous motor 0.18 kW, 0.18kW



SEH

Horizontal stirrup toggle clamp, Horizontal stirrup clamp - steel



RPP5

RPP heavy duty timing belt, RPP5



CABtool

Fitting cable tools, Cutting tools



HW_HT

Half-rail guide, Rail



FF50

Offset spur gear reducer, from 111 to 425 Nm



INS

Self tapping steel insert, Steel



PSG25

Spur gear - precision range, Stainless steel



PSG055

Spur gear - precision range, Stainless steel



PM3

Worm and wheel set, Hardened steel

Complementary products



TBEBASE

Base plate for economic mini-table, Allows X-Y cross tables



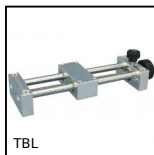
TBE12

Economic mini-table with trapezoidal leadscrew, 2kg



TBE16

Economic mini-table with trapezoidal leadscrew, 5kg



TBL

Mini leadscrew table with metric thread, 1kg