

Alu T type toothed timing pulley bar stock

Aluminium

T5-BAR

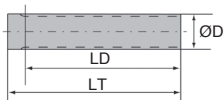


- **Toothed bar stock to be cut to length by the customer**
- The overall length is the same as the maximum length
- Material : Aluminium suitable for hard anodic oxidation
- Finish : Supplied not-treated



Info.

- We are unable to modify this product



DISCOUNTS

Qty	1+	2+	4+
Disc. List	-20%		On request

Part number	Z Teeth	ØD External	Length of teeth LD	Total length LT	Price each
10T5-BAR	10	15,05	125	140	7,92 €
11T5-BAR	11	16,65	125	140	8,58 €
12T5-BAR	12	18,25	125	140	9,37 €
13T5-BAR	13	19,85	125	140	9,40 €
14T5-BAR	14	21,45	140	140	11,01 €
15T5-BAR	15	23,05	140	140	11,93 €
16T5-BAR	16	24,60	140	140	13,39 €
17T5-BAR	17	26,20	140	140	14,01 €
18T5-BAR	18	27,00	140	140	15,56 €
19T5-BAR	19	29,40	140	140	16,89 €
20T5-BAR	20	31,00	160	160	19,41 €
21T5-BAR	21	32,70	160	160	20,25 €
22T5-BAR	22	34,15	160	160	22,55 €
23T5-BAR	23	35,85	160	160	22,77 €
24T5-BAR	24	37,40	160	160	24,42 €
25T5-BAR	25	38,95	160	160	26,23 €
26T5-BAR	26	40,60	160	160	28,92 €
27T5-BAR	27	42,20	160	160	29,14 €
28T5-BAR	28	43,75	160	160	32,07 €
29T5-BAR	29	45,35	160	160	32,23 €
30T5-BAR	30	46,95	160	160	34,33 €
32T5-BAR	32	50,10	160	160	39,90 €
34T5-BAR	34	53,25	160	160	43,61 €
35T5-BAR	35	54,85	160	160	43,89 €
36T5-BAR	36	56,45	160	160	46,34 €
37T5-BAR	37	58,06	160	160	48,93 €
38T5-BAR	38	59,65	160	160	49,19 €
40T5-BAR	40	62,85	160	160	53,47 €
42T5-BAR	42	66,00	160	160	58,03 €
44T5-BAR	44	69,20	160	160	67,94 €
45T5-BAR	45	70,80	160	160	68,42 €
46T5-BAR	46	72,40	160	160	69,02 €
48T5-BAR	48	75,55	160	160	76,42 €
50T5-BAR	50	78,75	160	160	85,22 €
60T5-BAR	60	94,65	160	160	114,98 €
72T5-BAR	72	113,75	160	160	161,63 €
80T5-BAR	80	126,48	160	160	188,59 €
90T5-BAR	90	142,40	160	160	248,23 €
100T5-BAR	100	158,31	160	160	320,88 €

Dimensions in mm

Our other products



APB_BOU
Protective cap, Safety cap



VDSQCB
Sliding lock adjustment system, Blocking wedge



R205
Die spring ISO10243, Heavy



ZHBRA
Plastic bevel gear, 1,25:1 2:1 3:1



SH4
Parallel axis helical gear, Steel 20NCD2



BABreglable
Adjustable ball pin hardened stainless steel, adjustable



ACLEFS
Floor anchor for aluminium profile, Adjustable



T2
T type timing belt, T2.5 Steel cored polyurethane



GCL
Linear ball slide Eco Range, economy range



WFRM
Flanged polymer nut, Polymer (Iglidur®) - 1 thread



SCA
Flat cable clamp, Steel



BPVMss
Stainless steel miniature ball transfer unit, Miniature to screw

Complementary products



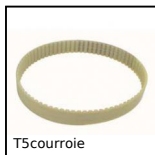
T5-10ECO
T type timing pulley, Economy range - T5 aluminium



T5-16ECO
T type timing pulley, Economy range - T5 aluminium



T5courroie
T type timing belt, T5 Steel cored polyurethane



T5courroie
T type timing belt, T5 Steel cored polyurethane