

- Material:  
Stainless steel 302 AMS 5688
- Standard springs are right hand wound

### Options

- For left hand wound springs, replace R in the part number with L
- Custom made springs

### Info.

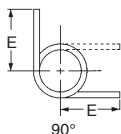
- \*A/S = Spring width
- Not supplied individually, contact us for details



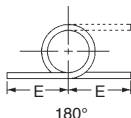
TO-L: Left hand wound spring (Option)



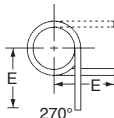
TO-R: Right hand wound spring (Standard)



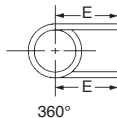
90°



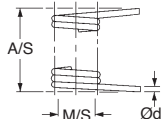
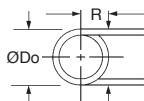
180°



270°



360°



### DISCOUNTS

Qty	1+	10+	25+	50+
Disc.	List	-15%	-45%	On request

Part number	Wire Ød	Outside Ø Do	Torque (N/mm) T	Loaded position R	M/S recommended pin ø	Leg Length E (mm)	A/S			Price each 1 to 9
							Min. axle length (mm)*	Fleet angle	Stock*	
T0120-900-55R	0,30	2,36	5,31	4,75	1,40	9,52	1,17	90°	✓	4,16 €
T0121-800-67R	0,30	2,77	5,31	4,75	1,70	9,52	2,18	180°	✓	4,16 €
T0122-700-62R	0,30	2,59	5,31	4,75	1,57	9,52	3,53	270°	-	4,24 €
T0121-801-09R	0,30	4,22	5,31	6,35	2,77	12,70	1,50	180°	✓	4,24 €
T0122-701-09R	0,30	4,32	5,31	6,35	2,77	12,70	2,18	270°	✓	4,24 €
T0123-601-09R	0,30	4,42	5,31	6,35	2,77	12,70	2,81	360°	✓	4,24 €

## DISCOUNTS

Qty	1+	10+	25+	50+
Disc.	List	-15%	-45%	On request

Part number	Wire Ød	Outside Ø Do	Torque (N/mm) T	Loaded position R	M/S recom- mended pin ø	Leg Length E (mm)	A/S Min. axle length (mm) <sup>1</sup>	Fleet angle	Stock*	Price each 1 to 9
T0170-900-93R	0,43	4,06	13,22	6,35	2,36	12,70	2,06	90°	✓	4,24 €
T0171-800-93R	0,43	4,37	13,22	6,35	2,36	12,70	3,23	180°	✓	4,24 €
T0172-700-93R	0,43	4,06	13,22	6,35	2,36	12,70	4,88	270°	-	4,24 €
T0171-801-56R	0,43	6,32	13,22	9,52	3,96	19,05	2,39	180°	✓	7,23 €
T0172-701-56R	0,43	6,58	13,22	9,52	3,96	19,05	3,13	270°	-	7,23 €
T0173-601-40R	0,43	5,97	13,22	9,52	3,56	19,05	4,32	360°	✓	7,23 €
T0200-901-09R	0,51	4,85	21,10	9,52	2,77	19,05	2,41	90°	✓	4,24 €
T0201-801-09R	0,51	4,55	21,10	9,52	2,77	19,05	4,32	180°	✓	4,24 €
T0202-700-93R	0,51	4,45	21,10	9,52	2,36	19,05	6,22	270°	-	4,24 €
T0201-801-40R	0,51	6,15	21,10	12,70	3,56	25,40	3,30	180°	✓	7,23 €
T0202-701-72R	0,51	6,81	21,10	12,70	4,37	25,40	4,19	270°	-	7,23 €
T0203-601-56R	0,51	6,45	21,10	12,70	3,96	25,40	6,35	360°	-	7,23 €
T0250-901-40R	0,64	5,97	42,40	9,52	3,56	19,05	2,44	90°	✓	4,24 €
T0251-801-40R	0,64	5,69	42,40	9,52	3,56	19,05	5,23	180°	✓	4,24 €
T0252-701-40R	0,64	5,56	42,40	9,52	3,56	19,05	8,03	270°	✓	4,24 €
T0251-802-03R	0,64	7,72	42,40	12,70	5,16	25,40	3,84	180°	✓	7,23 €
T0252-702-18R	0,64	8,64	42,40	12,70	5,54	25,40	5,23	270°	✓	7,23 €
T0253-602-18R	0,64	8,23	42,40	12,70	5,54	25,40	7,32	360°	-	7,23 €
T0320-901-72R	0,81	7,32	92,70	12,70	4,34	25,40	3,86	90°	✓	7,23 €
T0321-801-56R	0,81	6,86	92,70	12,70	3,96	25,40	6,91	180°	✓	7,23 €
T0322-701-56R	0,81	6,71	92,70	12,70	3,96	25,40	9,70	270°	-	7,23 €
T0321-802-18R	0,81	9,30	92,70	12,70	5,54	25,40	5,28	180°	✓	8,55 €
T0322-702-18R	0,81	8,99	92,70	12,70	5,54	25,40	7,52	270°	✓	8,55 €
T0323-602-34R	0,81	9,70	92,70	12,70	5,95	25,40	8,94	360°	✓	8,55 €
T0350-901-87R	0,89	8,00	113,00	15,88	4,75	31,75	3,43	90°	✓	7,23 €
T0351-801-87R	0,89	7,70	113,00	15,88	4,75	31,75	7,37	180°	✓	7,23 €
T0352-701-87R	0,89	7,90	113,00	15,88	4,75	31,75	11,23	270°	✓	7,23 €
T0351-802-81R	0,89	11,43	113,00	15,88	7,14	31,75	5,38	180°	✓	8,55 €
T0352-702-81R	0,89	11,05	113,00	15,88	7,14	31,75	8,33	270°	✓	8,47 €
T0353-603-12R	0,89	11,96	113,00	15,88	7,92	31,75	10,29	360°	✓	8,55 €

\*Subject to availability - Dimensions in mm

## Our other products



UTKpwr  
Utilitak® V rail, V rail



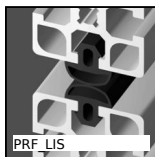
SLV  
Vertical toggle clamp,  
Vertical Lever Clamp -  
steel



DOMI30  
Accessories, Turntable



GE\_ES\_2RS  
Spherical bushing,  
Steel / steel with seals



PRF LIS  
Door seal for  
aluminium profile,  
Black NBR



CM\_CO  
Tools Hygienic Usit®  
and Hygienic  
Design®, Protective  
inserts for ...



DIV  
Locking bolt, With grip  
- Steel



HD  
Double needle roller  
universal joint, Heavy  
duty



ZG1  
Plastic spur gear,  
Machined plastic  
(delrin)



PENC  
Recessed handle, clip-  
in

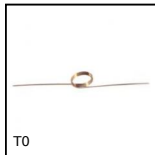


GBS  
Nut for ballscrew,  
Flanged ballscrew nut



GCL  
Linear ball slide -  
Stainless steel balls,  
Chariot - from 516 N  
to 8...

## Complementary products



T0  
Torsion spring,  
Stainless steel