



Screwjack with translating screw

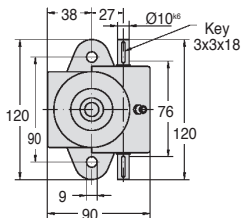
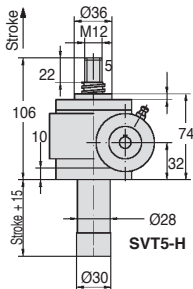
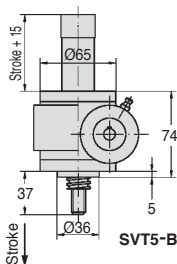
Nominal load 5,000N

SVT5

- **Standard stroke length: 100mm**
- **Material:**
 - Body: Aluminium
- **Weight (without screw): 1.5 kg**
- **Weight of screw: 0.2 kg /100mm**
- **Lubrication: Grease (50g required)**

Accessories

- Plate **SVT5-PLATEAU**
- Clevis **SVT5-CHAPE**



DISCOUNTS

Qty	1+	2+
Disc.	List	On request

Part number	Reduction ratio	Torque at nominal force		rpm max.	Max. speed (m/min)	Max. power (kW)	
		force (Nm)	Efficiency			at 20% DC	at 10% DC
SVT5-10	10:1	1,54	31%	2800	1,68	0,18	0,23
SVT5-20	20:1	1,04	23%	2800	0,84	0,18	0,23

Part number	Reduction ratio	Stroke (H)	Screw Ø	Stroke per rev (mm)	Nominal force (N)	Price each
-------------	-----------------	------------	---------	---------------------	-------------------	------------

Upwards direction

SVT5-10-100H	10:1	100	TR20 x 6	0,6	5000	641,34 €
SVT5-20-100H	20:1	100	TR20 x 6	0,3	5000	641,34 €
SVT5-COURSE		per additional 100mm of stroke length				20,43 €

Downwards direction

SVT5-10-100B	10:1	100	TR20 x 6	0,6	5000	641,34 €
SVT5-20-100B	20:1	100	TR20 x 6	0,3	5000	641,34 €
SVT5-COURSE		per additional 100mm of stroke length				20,43 €

Dimensions in mm

Our other products



TAC_SS

Stainless steel rigging screw (hook/eye),
Stainless steel



LVT

Miniature motorised actuator 4A, 4 ampers



PRF_CHA

Hinge for aluminium profile, Surface mounting hinge



BAC110

Swivel storage bin, Adjustable support



AC

Strike for toggle latch, 12mm



BPH

Ball transfer unit plain fit, High



PSPT

Flexible tube handle, PVC



PITAss

Locking bolt, with T handle



RT70

Self-centering locking Assembly, Medium/high torque



RTE

Rotex®, jaw coupling, steel



BPHClip

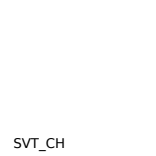
Clip for ball transfer unit, Insert clip - Installing from above



PCS62SS

Chain sprocket - Stainless steel, 15.875mm (DIN 08B-1)

Complementary products



SVT_CH

Clevis for screwjack, Clevis



SVR5

Screwjack with travelling nut, with moving nut



SVT_CH

Screwjack - pivot mounting, Pivoting bracket



LFM

Steel leadscrew, Medium carbon steel - 1 thread