



# Screwjack with translating screw

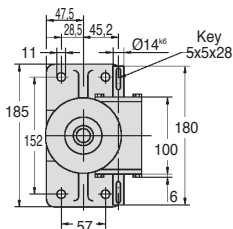
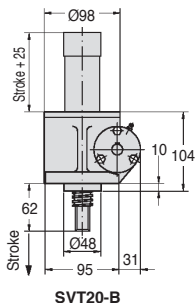
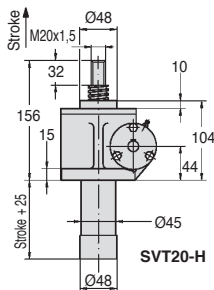
## Nominal load 20,000N

## SVT20

- **Standard stroke length: 100mm**
- **Material:**
  - Body: Iron GGG50
- **Weight (without screw): 7.8 kg**
- **Weight of screw: 0.34 kg /100mm**
- **Lubrication: Grease (150g required)**

### Accessories

- Plate **SVT20-PLATEAU**
- Clevis **SVT20-CHAPE**



### DISCOUNTS

Qty	1+	2+
Disc.	List	On request

Part number	Reduction ratio	Torque at nominal force (Nm)		rpm max.	Max. speed (m/min)	Max. power (kW)	
		Efficiency	Efficiency			at 20% DC	at 10% DC
SVT20-6	6:1	9,8	32%	2800	2,8	0,5	0,7
SVT20-24	24:1	4,1	19%	2800	0,7	0,5	0,7

Part number	Reduction ratio	Stroke (H)	Screw Ø	Stroke per rev (mm)	Nominal force (N)	Price each
<b>Upwards direction</b>						
SVT20-6-100H	6:1	100	TR26 x 6	1,00	20000	1 122,43 €
SVT20-24-100H	24:1	100	TR26 x 6	0,25	20000	1 122,43 €
SVT20-COURSE	per additional 100mm of stroke length					20,97 €
<b>Downwards direction</b>						
SVT20-6-100B	6:1	100	TR26 x 6	1,00	20000	1 122,43 €
SVT20-24-100B	24:1	100	TR26 x 6	0,25	20000	1 122,43 €
SVT20-COURSE	per additional 100mm of stroke length					20,97 €

Dimensions in mm

## Our other products



ZG125

Plastic spur gear,  
Machined plastic  
(delrin)



M2

Worm and wheel set,  
Unhardened steel



NCT

Square tube  
connector, Fixed  
angle



PPD

Indexing plunger for  
sheets, For sheet  
metal



GG1

Ground spur gear,  
Heat treated steel



CLSCLP

Clevis components,  
short version, Steel -  
Short range



PT882

Drive sprocket for slat  
top chain, Range 882



PSG085

Spur gear - precision  
ground, Stainless steel  
303



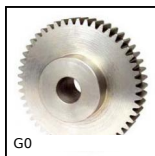
PM4

Worm and wheel set,  
Non hardened steel



MEP

Revolving handle for  
handwheel, Fixed



G0

Steel spur gear, Steel  
20NCD2



PGNT

Thermoplastic T  
handle, With threaded  
spindle

## Complementary products

SVT\_CH

Clevis for screwjack,  
Clevis



SVR20

Screwjack with  
travelling nut, with  
moving nut



SVT\_CH

Screwjack - pivot  
mounting, Pivoting  
bracket



LFM

Steel leadscrew,  
Medium carbon steel -  
1 thread