

Screwjack with translating screw

SVT15

Nominal load 15,000N

- **Standard stroke length: 100mm**

- **Material:**

Body: Iron GGG50

- Weight (without screw): 3.2 kg

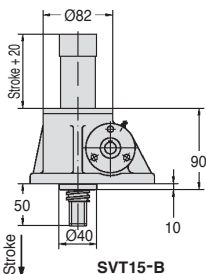
- Weight of screw: 0.3 kg /100mm

- Lubrication: Grease
(100g required)

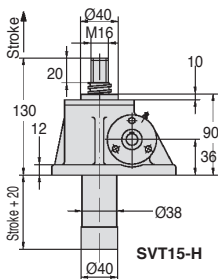
Accessories

- Plate **SVT15-PLATEAU**

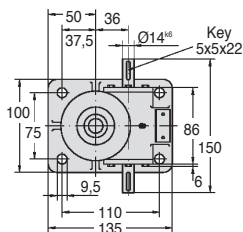
- Clevis **SVT15-CHAPE**



SVT15-B



SVT15-H



DISCOUNTS

Qty	1+	2+
Disc.	List	On request

Part number	Reduction ratio	Torque at nominal force		rpm max.	Max. speed (m/min)	Max. power (kW)	
		force (Nm)	Efficiency			at 20% DC	at 10% DC
SVT15-6	6:1	7,23	33%	2800	2,80	0,35	0,46
SVT15-25	25:1	2,86	20%	2800	0,67	0,35	0,46

Part number	Reduction ratio	Stroke (H)	Screw Ø	Stroke per rev (mm)	Nominal force (N)	Price each

Upwards direction

SVT15-6-100H	6:1	100	TR24 x 6	1,00	15000	895,91 €
SVT15-25-100H	25:1	100	TR24 x 6	0,24	15000	895,91 €
SVT15-COURSE					per additional 100mm of stroke length	20,81 €

Downwards direction

SVT15-6-100B	6:1	100	TR24 x 6	1,00	15000	895,91 €
SVT15-25-100B	25:1	100	TR24 x 6	0,24	15000	895,91 €
SVT15-COURSE					per additional 100mm of stroke length	20,81 €

Dimensions in mm

Our other products



BLHB60

Right angled gearbox, bored shafts, up to 70 Nm



NTMdl

Set screw delrin tip, Delrin-point



SUA4

Single chain supplied by the metre, Steel



UGH50

H Type Guide units, For Ø50 actuators



DOMI80

Accessories, Plate



PRF_BP

Doorstop for aluminium profile, Swing door stop



MEP

Revolving handle for handwheel, Fixed



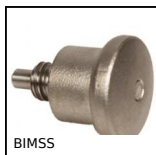
BPHRF

Ball transfer unit housed spring loaded, High



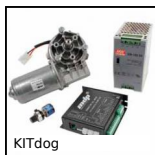
BABreceptacle

Ball pin socket, Socket



BIMSS

Indexing plunger mini, miniature - Stainless



KITdog

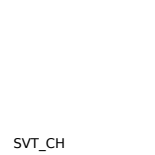
24V DC motorisation kit, Worm and wheel



MDR

Dee shackle with eye bolt, Steel

Complementary products



SVT_CH

Clevis for screwjack, Clevis



SVR15

Screwjack with travelling nut, with moving nut



SVT_CH

Screwjack - pivot mounting, Pivoting bracket



LFM

Steel leadscrew, Medium carbon steel - 1 thread