

Screwjack – pivot mounting

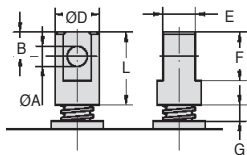
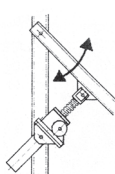
Pivoting bracket and clevis

SVTCH
SVTSK

Pivoting assemblies are often used to avoid radial loads on the screw. A pivoting bracket is placed under the casing, whereas a clevis is placed at the end of the screw.

Important

As the clevis has a special thread, it must be ordered at the same time as the screwjack. They cannot be supplied separately.

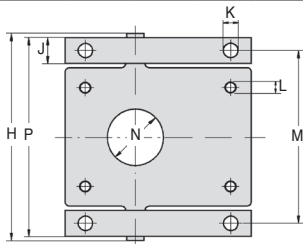
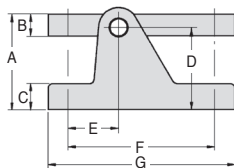


DISCOUNTS

Qty	1+	2+
Disc.	List	On request

Clevis

For		ØA	B	ØD	L	E	F	G	Price each
Part number	screwjack								
SVT5-CH	SVT5	15	15	30	50	20	30	10	68,80 €
SVT15-CH	SVT15	15	15	35	50	25	35	20	72,44 €
SVT20-CH	SVT20	15	23	40	65	30	46	20	77,91 €
SVT30-CH	SVT30	15	23	40	65	30	46	20	77,91 €



Pivoting bracket

For		A	B	C	D	E	F	G
Part number	screwjack							
SVT5-SK	SVT5	50,0	10	8	45,0	30,0	060	070
SVT15-SK	SVT15	67,5	15	15	60,0	37,5	110	135
SVT20-SK	SVT20	90,0	25	20	77,5	50,0	135	165
SVT30-SK	SVT30	90,0	25	20	77,5	50	135	165

Part number	H	P	J	K	L	M	N	Price each
SVT5-SK	150	144	10	6	M8	134	45,2	240,40 €
SVT15-SK	150	140	15	9	M8	125	48,2	308,27 €
SVT20-SK	260	250	25	13	M10	225	60,2	434,65 €
SVT30-SK	190	180	25	13	M12	155	60,2	434,65 €

Dimensions in mm

Our other products



PMC48_M8

Anti-vibration machine mount, Oval base plate



RHT

High Temperature wheel, up to 200kg



PCM

Fixed cylindrical handle, Fixed non-turning handle



SCH

Horizontal hook toggle clamp, Horizontal Hook clamp - stainless steel



PCS62

Chain sprocket - steel, 15.875 (DIN 10B-1)



CHA1056-U4

Screwed hinge, 180°



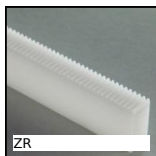
SR

Narrow spur rack, Stainless steel



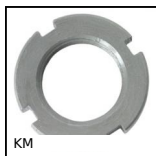
Gal-cardan

Single universal joint eco series, Low duty



ZR

Plastic rack, Delrin



KM

Bearing locknut, Locknut KM



IBJss

Ball and socket joint, Stainless steel



GALRUB

60mm rubber wheel for conveyor belt, Rubber

Complementary products



SVT5

Screwjack with travelling screw, with translating screw



SVT15

Screwjack with travelling screw, with translating screw



SVT20

Screwjack with travelling screw, with translating screw



SVT30

Screwjack with travelling screw, with translating screw