

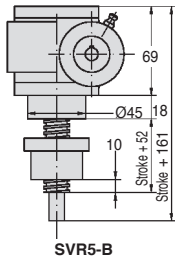


Screwjack - with moving nut

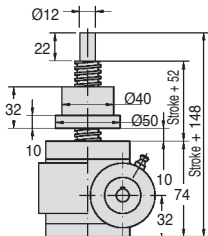
Nominal force: 5,000N

SVR5

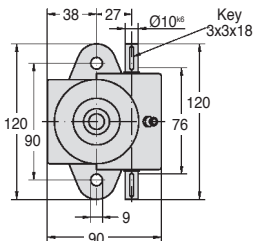
- **Basic stroke: 100mm**
- Material: Aluminium (body)
- Weight (without screw): 1.5kg
- Weight of screw: 0.2kg /100mm
- Lubrication: Grease (50g required)



SVR5-B



SVR5-H



DISCOUNTS

Qty	1+	2+
Disc.	List	On request

Part number	Reduction ratio	Torque at nominal force (Nm)		rpm max.	Max. speed (m/min)	Max. power (kW)	
		force	Efficiency			at 20% DC	at 10% DC
SVR5-10	10:1	1,54	31%	2800	1,68	0,18	0,23
SVR5-20	20:1	1,04	23%	2800	0,84	0,18	0,23

Part number	Reduction ratio	Stroke (H)	Screw Ø	Stroke per rev (mm)	Nominal force (N)	Price each
SVR5-10-100H	10:1	100	TR20 x 6	0,6	5000	847,98 €
SVR5-20-100H	20:1	100	TR20 x 6	0,3	5000	847,98 €
SVR5-COURSE	per additional 100mm of stroke length					15,12 €
Downwards direction						
SVR5-10-100B	10:1	100	TR20 x 6	0,6	5000	847,98 €
SVR5-20-100B	20:1	100	TR20 x 6	0,3	5000	847,98 €
SVR5-COURSE	per additional 100mm of stroke length					15,12 €

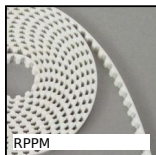
Dimensions in mm

Our other products



PVL

Small lobed handle,
Polyamide



RPPM

RPP type belt per
metre, RPP8 Steel
cored polyurethane



BAC105

Storage bin, 8mm



DCG

Suction cup, 2.5
bellows, natural
rubber



CHT

Asynchronous AC
motor , 0.09kW



CHINV2

Invisible hinge,
Invisible - Opening up
to 125°



SSG1_304L

Stainless steel spur
gear, Stainless steel
304L



RFK48B

Hypoid gearbox -
Stainless steel, up to
350 Nm



BLHB40

Right angled gearbox,
bored shafts, up to
350 Nm



PRF-P

Aluminium profile feet
Support, For feet or



BCM_TP

Modular cylindrical
brush, Tampico



gt64

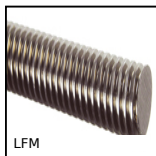
Rotating bent lever,
Common applications

Complementary products



SVT5

Screwjack with
travelling screw, with
translating screw



LFM

Steel leadscrew,
Medium carbon steel -
1 thread