

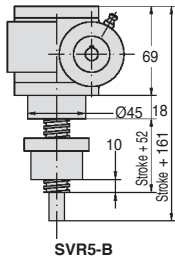


Screwjack - with moving nut

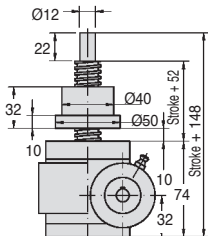
Nominal force: 5,000N

SVR5

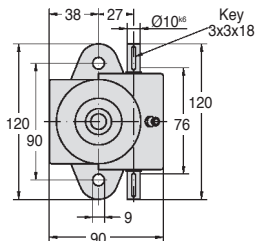
- **Basic stroke: 100mm**
- Material: Aluminium (body)
- Weight (without screw): 1.5kg
- Weight of screw: 0.2kg /100mm
- Lubrication: Grease (50g required)



SVR5-B



SVR5-H



DISCOUNTS

Qty	1+	2+
Disc.	List	On request

Part number	Reduction ratio	Torque at nominal force (Nm)		rpm max.	Max. speed (m/min)	Max. power (kW)	
		force	Efficiency			at 20% DC	at 10% DC
SVR5-10	10:1	1,54	31%	2800	1,68	0,18	0,23
SVR5-20	20:1	1,04	23%	2800	0,84	0,18	0,23

Part number	Reduction ratio	Stroke (H)	Screw Ø	Stroke per rev (mm)	Nominal force (N)	Price each
Upwards direction						
SVR5-10-100H	10:1	100	TR20 x 6	0,6	5000	847,98 €
SVR5-20-100H	20:1	100	TR20 x 6	0,3	5000	847,98 €
SVR5-COURSE	per additional 100mm of stroke length					15,12 €
Downwards direction						
SVR5-10-100B	10:1	100	TR20 x 6	0,6	5000	847,98 €
SVR5-20-100B	20:1	100	TR20 x 6	0,3	5000	847,98 €
SVR5-COURSE	per additional 100mm of stroke length					15,12 €

Dimensions in mm

Our other products



NKIA

Combined bearing with inner ring, Axial load in one direction



SNP

Stainless/Polymer pillow block bearing, Cast iron - Split pillow



SCR

Suction cup threaded insert, Adaptator for insert



DOMI50

Domino 50 adjustable slide, Slide DOMILINE 50



WINGbr

Wing screw, hand tightened DIN316, Brass DIN 316



CLM

Male clevis end, Stainless steel short



GGB

Female wing knob, With blind thread



DOMI80

Connecting kits, XY linking kit



SUA4_L

Chain link, Steel



NSP

Right angled support clamp, Right angled



DOMI30

Connecting kits, XZ linking kit



BLOC

Doorstop, Doorstop

Complementary products



SVT5

Screwjack with travelling screw, with translating screw



LFM

Steel leadscrew, Medium carbon steel - 1 thread