

Screwjack with travelling nut



SVR30

Nominal load 30,000N

- **Standard stroke length: 100mm**

- **Material:**

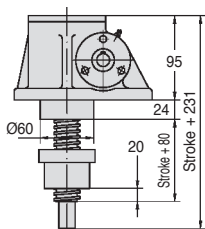
Body: Iron GGG50

- Weight (without screw): 8.2 kg

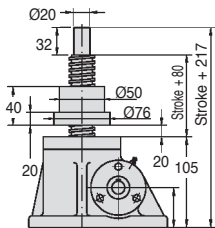
- Weight of screw 0.43 kg /100mm

- Lubrication: Grease

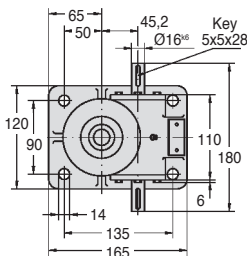
(200g required)



SVR30-B



SVR30-H



DISCOUNTS

Qty	1+	2+
Disc.	List	On request

Part number	Reduction ratio	Torque at nominal force		rpm max.	Max. speed (m/min)	Max. power (kW)	
		force (Nm)	Efficiency			at 20% DC	at 10% DC
SVR30-6	6:1	16,5	29%	2800	2,8	0,6	0,8
SVR30-24	24:1	7,0	17%	2800	0,7	0,6	0,8

Part number	Reduction ratio	Stroke (H)	Screw Ø	Stroke per rev (mm)	Nominal force (N)	Price each
SVR30-6-100H	6:1	100	TR30 x 6	1,00	30000	1 447,26 €
SVR30-24-100H	24:1	100	TR30 x 6	0,25	30000	1 447,26 €
SVR30-COURSE	per additional 100mm of stroke length					16,56 €
Downwards direction						
SVR30-6-100B	6:1	100	TR30 x 6	1,00	30000	1 447,26 €
SVR30-24-100B	24:1	100	TR30 x 6	0,25	30000	1 447,26 €
SVR30-COURSE	per additional 100mm of stroke length					16,56 €

Dimensions in mm

HPC

WEB
04/2020

www.hpceurope.com

Tél: 0 825 88 5000 Service 0,15 €/min + prix appel

Our other products



MFBS

Stainless steel flexible bellows coupling, Stainless steel - with se...



DOMI120

Domino 120 adjustable slide, Slide DOMILINE 120 with counter and han...



PRF4545_P

Stripp Aluminium profile with extendable slot, 45 x 45 mm



AC

Strike for toggle latch, 15mm



CHB

Reaction arm, CHB gear reducers reaction arm



UTKpocr

Utilitrak® 3 wheels carriage, Polymer roller carriage



UGH50

H Type Guide units, For Ø50 actuators



PLM-C

Flat gripping magnet, Flat holding magnet



RPCpl

Fixed castor with plate, Steel -



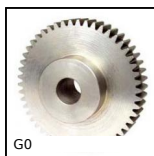
MSP19

Masterplate® glueable insert



AT5P_AT10P

Connecting plate for AT type timing belts,



G0

Steel spur gear, Steel 20NCD2

Complementary products



SVT30

Screwjack with travelling screw, with translating screw



LFM

Steel leadscrew, Medium carbon steel - 1 thread