

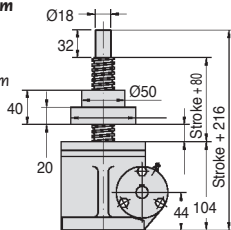


Screwjack with travelling nut

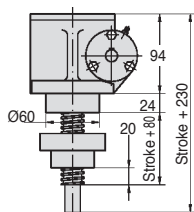
Nominal load 20,000N

SVR20

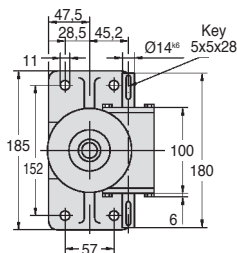
- Standard stroke length: 100mm
- Material:
 - Body: Iron GGG50
- Weight (without screw): 7.8 kg
- Weight of screw: 0.34 kg /100mm
- Lubrication: Grease (150g required)



SVR20-H



SVR20-B



DISCOUNTS

Qty	1+	2+
Disc.	List	On request

Part number	Reduction ratio	Torque at nominal force (Nm)	Efficiency	rpm max.	Max. speed (m/min)	Max. power (kW) at 20% DC	Max. power (kW) at 10% DC
SVR20-6	6:1	9,8	32%	2800	2,8	0,5	0,7
SVR20-24	24:1	4,1	19%	2800	0,7	0,5	0,7

Part number	Reduction ratio	Stroke (H)	Screw Ø	Stroke per rev (mm)	Nominal force (N)	Price each
Upwards direction						
SVR20-6-100H	6:1	100	TR26 x 6	1,00	20000	1 443,88 €
SVR20-24-100H	24:1	100	TR26 x 6	0,25	20000	1 443,88 €
SVR20-COURSE	per additional 100mm of stroke length					15,68 €
Downwards direction						
SVR20-6-100B	6:1	100	TR26 x 6	1,00	20000	1 443,88 €
SVR20-24-100B	24:1	100	TR26 x 6	0,25	20000	1 443,88 €
SVR20-COURSE	per additional 100mm of stroke length					15,68 €

Dimensions in mm

Our other products



PGB
Accessory-holder for aluminium profile,
Tool holder



GP
Spring loaded toggle latch, With padlock-holder



MDB_MTB
Moulded plastic bevel gear (nylon), 3:1



BOX-NINA
Self locking nut - DIN985, Box set of steel nuts



LVT
Miniature motorised actuator 4A, 4 amperes



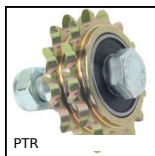
VQTplqp
Quarter-turn clamp lock - Clamping plate, Wall mounting



PSG3
Spur gear - precision range, Pre-hardened Steel 35NCD6



RJA00_02
Sealing strip, Clipping



PTR
Idle chain sprocket, For standard applications



CHMR90
Worm and wheel gear reducer, up to 540 Nm



PFC
Fixed rubber levelling foot, Levelling support for small parts



PO
Pull handle - Multi-sector, Tapped recessed insert

Complementary products



SVT20
Screwjack with travelling screw, with translating screw



LFM
Steel leadscrew, Medium carbon steel - 1 thread