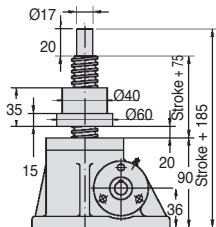


Screwjack with travelling nut

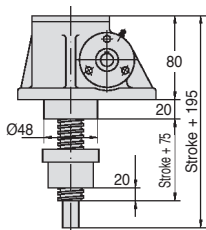


SVR15 Nominal load 15,000N

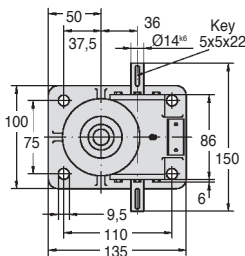
- **Standard stroke length: 100mm**
- **Material:**
Body: Iron GGG50
- **Weight (without screw):**
3.2 kg
- **Weight of screw:**
0.3 kg /100mm
- **Lubrication: Grease**
(100g required)



SVR15-H



SVR15-B



DISCOUNTS

Qty	1+	2+
Disc.	List	On request

Part number	Reduction ratio	Torque at nominal force		rpm max.	Max. speed (m/min)	Max. power (kW)	
		force (Nm)	Efficiency			at 20% DC	at 10% DC
SVR15-6	6:1	7,23	33%	2800	2,80	0,35	0,46
SVR15-25	25:1	2,86	20%	2800	0,67	0,35	0,46

Part number	Reduction ratio	Stroke (H)	Screw Ø	Stroke per rev (mm)	Nominal force (N)	Price each
SVR15-6-100H	6:1	100	TR24 x 6	1,00	15000	1 156,91 €
SVR15-25-100H	25:1	100	TR24 x 6	0,24	15000	1 156,91 €
SVR15-COURSE	per additional 100mm of stroke length					15,55 €
Downwards direction						
SVR15-6-100B	6:1	100	TR24 x 6	1,00	15000	1 156,91 €
SVR15-25-100B	25:1	100	TR24 x 6	0,24	15000	1 156,91 €
SVR15-COURSE	per additional 100mm of stroke length					15,55 €

Dimensions in mm

Our other products



PRF_PGN

Door handle for aluminium profile, Handle with lock suitable



PR821

Idler sprocket for slat top chain, Ranges 821 and 805



NCT

Square tube connector, Fixed angle



PW_PWG1

Worm - precision range, Stainless steel



SH1

Parallel axis helical gear, Machined plastic (delrin)



PSG25

Spur gear - precision range, Stainless steel 316



PPS

Lifting ring, Universal threaded



PW_PWG1

Worm - precision range, Steel



SVT30

Screwjack with travelling screw, with translating screw



NIN

Self-locking nut, A2 Stainless steel



ZG3

Plastic spur gear, Machined plastic (delrin)



MFBC

Flexible Bellows coupling, Aluminium and Bronze - with clamping jaw

Complementary products



SVT15

Screwjack with travelling screw, with translating screw



LFM

Steel leadscrew, Medium carbon steel - 1 thread