

Adjustable latch clamp with catch plate **StaSta**

SVG26 Span adjustable from 82 to 92mm

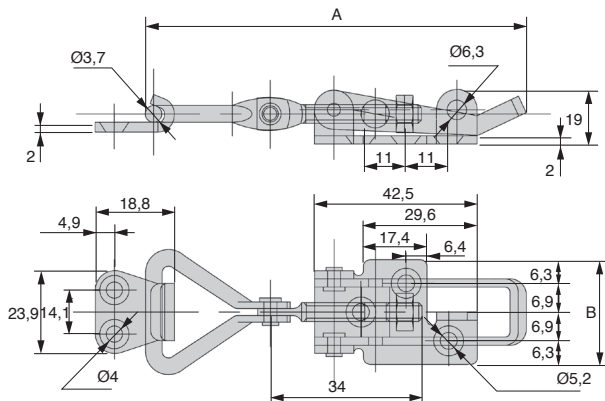
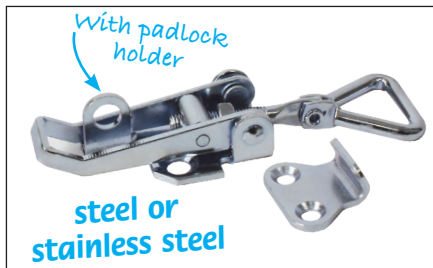
- Adjustable latch clamp with catch-plate

- Materials:

- Chromed steel
- Non treated 304 stainless steel

Application

- Clamping system for industrial applications
- Fold down the handle after attaching the hook
- Span is adjusted by turning the hook



DISCOUNTS

| Qty | 1+ | 10+ | 20+ | 50+ |
|-------|------|-----|-----|------------|
| Disc. | List | -3% | -5% | On request |

| Part number | A | B | Material | Finish | Weight (g) | Stock* | Price each 1 to 9 |
|----------------|----------|------|-------------|------------|------------|--------|-------------------|
| SVG26-82-92 | 82 to 92 | 26,4 | Steel | Galvanised | 48 | ✓ | 6,75 € |
| SVG26-82-92/SS | 82 to 92 | 26,4 | S-Steel 304 | Natural | 48 | ✓ | 11,32 € |

*Subject to availability - Dimensions in mm

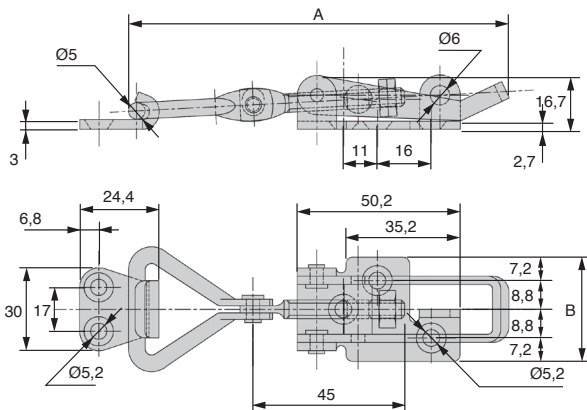
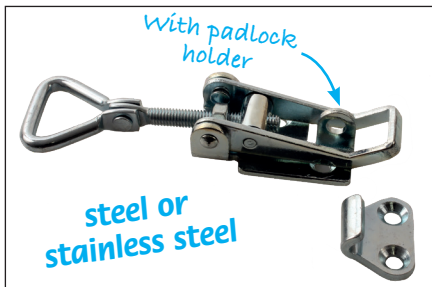
Ste Sta Adjustable latch clamp with catch plate

Span adjustable from 106.7 to 121.4mm **SVG32**

- Adjustable latch clamp with catch-plate
- Materials:
Chromed steel
Non treated 304
stainless steel

Application

- Clamping system for industrial applications
- Fold down the handle after attaching the hook
- Span is adjusted by turning the hook



DISCOUNTS

| | | | | |
|------------|-----|-----|-----|------------|
| Qty | 1+ | 10+ | 20+ | 50+ |
| Disc. List | -3% | -5% | -5% | On request |

| Part number | A | B | Material | Finish | Weight (g) | Price each 1 to 9 |
|------------------|----------------|----|-------------|------------|------------|-------------------|
| SVG32-106-121 | 106.7 to 121.4 | 32 | Steel | Galvanised | 102 | 6.60 € |
| SVG32-106-121/SS | 106.7 to 121.4 | 32 | S-Steel 304 | Natural | 102 | 18.91 € |

*Subject to availability - Dimensions in mm

Adjustable latch clamp with catch plate **Ste|Sta**

SVG39 Span adjustable from 118 to 130.5mm

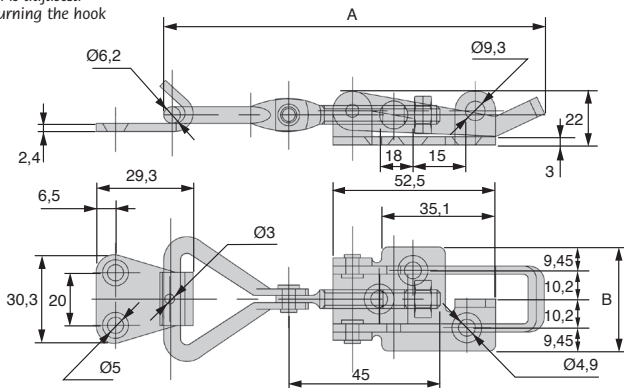
- Adjustable latch clamp with catch-plate

- Materials:

- Chromed steel
- Non treated 304 stainless steel

Application

- Clamping system for industrial applications
- Fold down the handle after attaching the hook
- Span is adjusted by turning the hook



DISCOUNTS

| Qty | 1+ | 10+ | 20+ | 50+ |
|-------|------|-----|-----|------------|
| Disc. | List | -3% | -5% | On request |

| Part number | A | B | Material | Finish | Weight (g) | Stock* | Price each 1 to 9 |
|------------------|--------------|------|-------------|------------|------------|--------|-------------------|
| SVG39-118-130 | 118 to 130,5 | 39,3 | Steel | Galvanised | 124 | ✓ | 11,51 € |
| SVG39-118-130/SS | 118 to 130,5 | 39,3 | S-Steel 304 | Natural | 124 | ✓ | 25,25 € |

*Subject to availability - Dimensions in mm

HPC

WEB
04/2020

www.hpceurope.com

Tél: 0 825 88 5000 Service 0,15€/min + prix appel

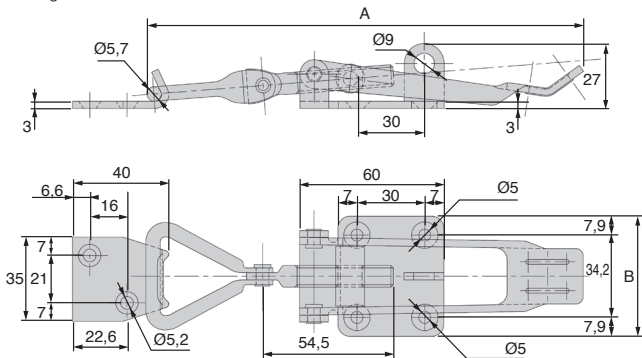
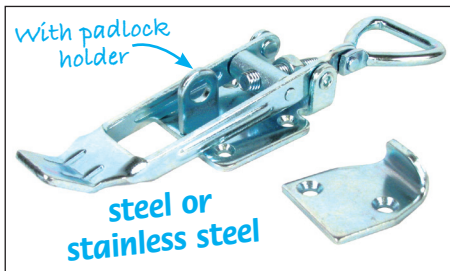
SteSta Adjustable latch clamp with catch plate

Span adjustable from 174 to 190mm **SVG50**

- Adjustable latch clamp with catch-plate
- Screw fixing
- Materials:
 - Chromed steel
 - Non treated 304 stainless steel

Application

- Clamping system for industrial applications
- Fold down the handle after attaching the hook
- Span is adjusted by turning the hook



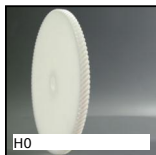
DISCOUNTS

| Qty | 1+ | 10+ | 20+ | 50+ |
|------------|-----|-----|------------|-----|
| Disc. List | -3% | -5% | On request | |

| Part number | A | B | Material | Finish | Weight (g) | Stock* | Price each 1 to 9 |
|------------------|------------|----|-------------|------------|------------|--------|-------------------|
| SVG50-174-190 | 174 to 190 | 50 | Steel | Galvanised | 236 | ✓ | 14,75 € |
| SVG50-174-190/SS | 174 to 190 | 50 | S-Steel 304 | Natural | 236 | - | 48,36 € |

*Subject to availability - Dimensions in mm

Our other products



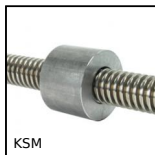
Crossed helical gear
crossed axis at 90°,
Machined plastic
(delrin)



Spring plunger with
internal hexagonal
socket, stainless steel
303 b...



Steel spur gear, Steel
20NCD2



Cylindrical steel nut,
Steel - 1 thread



HTD type tooth bar
stock, HTD5



Articulated foot with
sheet metal base
Ø50, Articulated foot



Chain sprocket with
hardened teeth,
15.875mm (DIN10B-1)



Closed linear
precision bearing,
Precision - steel



Right angle spiro
bevel gearbox, Up to
78Nm



Stainless steel pull
handle, Stainless steel



Stainless steel
hexagonal headed
thumb screw, Male



Right angle spiro
bevel gearbox, Up to
182Nm

Complementary products



Adjustable latch
clamp with strike
plate, Stroke from
77,3mm to 83mm



Adjustable latch
clamp with strike
plate, Stroke from
96mm to 121,7mm