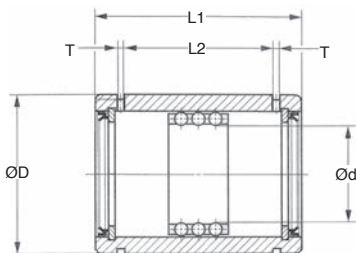
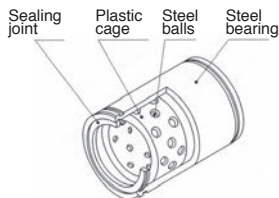


For combined rotary and linear movements

- Permits both linear and rotary movement
- Sealed
- Material: steel
- Stroke: should not exceed 80% of the max. stroke length indicated in the table
- Max. temperature: +120°C

## Assembly

- Use shafts with hardness 58-64 HRC, Ra 0.2
- When mounted vertically use:
  - shaft: k5, m5
  - housing: H6, H7
- Otherwise use
  - shaft: n5, p6
  - housing: j6, j7



## DISCOUNTS

|            |     |      |            |     |
|------------|-----|------|------------|-----|
| Qty        | 1+  | 5+   | 10+        | 25+ |
| Disc. List | -6% | -12% | On request |     |

| Part number | Ød | ØD | L1 | L2   | T   | Max. stroke (mm) | Static load Co (N) | Dynamic load C (N) | Weight (g) | Stock* | Price each 1 to 4 |
|-------------|----|----|----|------|-----|------------------|--------------------|--------------------|------------|--------|-------------------|
| STU-8       | 8  | 15 | 24 | 12,3 | 1,5 | 14               | 211                | 315                | 16,5       | ✓      | 32,71 €           |
| STU-10      | 10 | 19 | 30 | 15,5 | 1,5 | 16               | 466                | 659                | 30,7       | ✓      | 34,95 €           |
| STU-12      | 12 | 23 | 32 | 17,1 | 1,5 | 17               | 822                | 1110               | 45,0       | ✓      | 37,22 €           |
| STU-16      | 16 | 28 | 37 | 21,1 | 1,5 | 24               | 998                | 1230               | 74,0       | ✓      | 41,52 €           |
| STU-20      | 20 | 32 | 45 | 26,8 | 2,0 | 32               | 1250               | 1390               | 107,0      | ✓      | 43,60 €           |
| STU-25      | 25 | 37 | 45 | 26,8 | 2,0 | 32               | 1430               | 1450               | 121,0      | ✓      | 56,85 €           |
| STU-30      | 30 | 45 | 65 | 45,1 | 2,5 | 65               | 3160               | 3110               | 215,0      | ✓      | 69,71 €           |
| STU-35      | 35 | 52 | 70 | 50,1 | 2,5 | 75               | 3550               | 3290               | 342,0      | -      | 82,47 €           |
| STU-40      | 40 | 60 | 80 | 59,9 | 2,5 | 91               | 4810               | 4340               | 529,0      | ✓      | 104,30 €          |

\*Depending on availability - Dimensions in mm

## Our other products



BIMSS  
Indexing plunger mini,  
miniature - Stainless  
steel



DBL805  
Idler for slat top  
chain, Range 805



ETP  
Modular handle for  
aluminium profile,  
Modular handle



BPM-Z  
Plastic slotted spring  
plunger with ball tip,  
Plastic body + stainle...



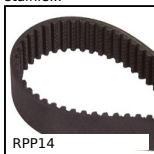
SVR5  
Screwjack with  
travelling nut, with  
moving nut



CHN\_CHNSS  
Straight long link  
stainless steel chain,  
Stainless steel



HAR9  
Captive C washer, DIN  
6371



RPP14  
RPP heavy duty  
timing belt, RPP14



B\_ECO  
Eco. range steel bevel  
gear, 1:1



FF30  
Offset spur gear  
reducer, from 21.50  
to 83 Nm



VQTplq  
Quarter-turn clamp  
lock - Clamping plate,  
Wall mounting



GMK17\_R  
Round guide, Round  
guide for conical  
profile

Complementary products