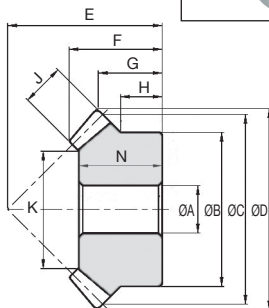


Ratio 1:1

Stainless steel 303

- Module 1 to 2.5
- Pressure angle 20°
- Teeth: Gleason
- Precision JIS B 1704 : 1978 grade 3
- Material :
Stainless steel 303
- Gear hardness < 187HB
- Two gears required
to make a pair



DISCOUNTS

Qty	1+	6+	10+
Disc.	List	-12%	On request

Part number	Module	Teeth		ØA	ØB	ØC	ØD	E	F	G	H	N	J	K	Weight (g)	Price each	
		Z	H7													1 à 5	6 à 10
SSB1-20-RA	1	20	6	16	20	21,41	20	13,95	10,71	8	12	5	9,86	0,019	42,57	€	
SSB1-25-RA		25	6	20	25	26,41	23	15,16	11,21	8	14	6	15,03	0,035	46,92	€	
SSB1-30-RA		30	8	24	30	31,41	28	17,71	13,71	10	16	6	19,03	0,057	57,50	€	
SSB1.5-20-RA	1,5	20	8	26	30	32,12	30	21,24	16,06	13	19	8	15,37	0,074	54,13	€	
SSB1.5-25-RA		25	10	30	37,5	39,62	34	22,25	16,31	11,5	19	9	19,54	0,11	67,68	€	
SSB1.5-30-RA		30	10	36	45	47,12	43	28,24	21,56	16	25	10	25,72	0,21	99,05	€	
SSB2-20-RA	2	20	12	34	40	42,83	37	24,89	18,41	14	22	10	21,72	0,15	76,49	€	
SSB2-25-RA		25	12	45	50	52,83	40	24,33	16,41	12,5	20	12	26,06	0,24	95,26	€	
SSB2-30-RA		30	12	45	60	62,83	50	29,43	21,41	12,5	25	12	36,06	0,37	138,61	€	
SSB2.5-20-RA	2,5	20	14	42	50	53,54	48	32,54	24,77	19	29	12	28,06	0,30	108,65	€	
SSB2.5-25-RA		25	16	55	62,5	66,04	50	30,41	20,52	15	26	15	34,57	0,46	145,19	€	
SSB2.5-30-RA		30	16	60	75	78,54	62	36,28	26,27	17	32	15	47,57	0,76	212,52	€	

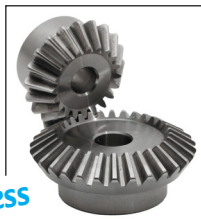
Dimensions in mm

Stainless steel 303

Ratio

1,5:1 2:1 3:1

- Module 1 to 2.5
- Pressure angle 20°
- Teeth: Gleason
- Precision JIS B 1704 : 1978 grade 3
- Material :
- Stainless steel 303
- Gear hardness < 187HB
- Two gears required to make a pair



stainless
steel

DISCOUNTS

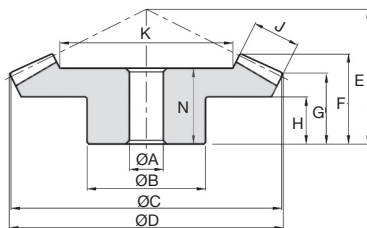
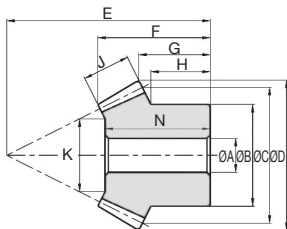
Qty	1+	6+	10+
Disc.	List	-12%	On request

Part number	Module	Teeth		ØA	ØB	ØC	ØD	E	F	G	H	N	J	K	Weight (g)	Price each 1 à 5
		Z	H7													
Ratio 1,5:1																
SSHB1.5-20-RA	1,5	20	8	25	30	33,13	33	18,63	11,54	8,83	17	9	17,05	0,063	55,11	€
SSHB1.5-30-RA		30	10	30	45	46,24	28	18,53	13,93	8	16	9	27,37	0,120	84,88	€
SSHB2-20-RA	2	20	10	35	40	44,18	45	25,06	16,39	13,33	22	11	21,34	0,160	82,29	€
SSHB2-30-RA		30	10	35	60	61,65	40	26,87	21,24	15	23	11	37,56	0,260	129,60	€
SSHB2.5-20-RA	2,5	20	12	40	50	55,22	55	31,06	19,24	14,16	28	15	27,42	0,280	118,05	€
SSHB2.5-30-RA		30	15	45	75	77,07	50	34,22	26,55	18	30	15	45,61	0,540	194,93	€
Ratio 2:1																
SSDB1.5-20-RA	1,5	20	8	25	30	33,61	46	25,54	16,9	14,75	24	10	17,28	0,088	62,51	€
SSDB1.5-40-RA		40	10	38	60	60,88	35	25,01	20,88	15	22	10	39,64	0,270	132,03	€
SSDB2-20-RA	2	20	12	32	40	44,81	60	34,16	21,2	18	32	15	20,92	0,190	92,67	€
SSDB2-40-RA		40	12	50	80	81,17	45	32,37	26,17	18	27	15	48,46	0,610	214,91	€
SSDB2.5-20-RA	2,5	20	12	40	50	56,01	75	43,78	26,5	22,5	41	20	24,56	0,400	144,01	€
SSDB2.5-40-RA		40	15	60	100	101,46	55	39,73	31,46	20	35	20	60,28	1,210	352,53	€

Dimensions in mm

Ratio
1,5:1
2:1
3:1

Stainless steel 303



DISCOUNTS

Qty	1+	6+	10+
Disc.	List	-12%	On request

Part number	Module	Teeth		ØA	ØB	ØC	ØD	E	F	G	H	N	J	K	Weight (g)	Price each 1 à 5
		Z	H7													
Ratio 3:1																
SSTB1.5-15-RA	1.5	15	8	18	22,5	26,54	47	23,19	13,92	12,5	22,5	10	14,75	0,041	43,94	€
SSTB1.5-45-RA		45	10	36	67,5	68,06	28	20,44	17,59	11	17	10	46,58	0,250	143,59	€
SSTB2-15-RA	2	15	10	24	30	35,35	60	29,8	15,89	14	29	15	19,13	0,095	63,69	€
SSTB2-45-RA		45	12	60	90	90,75	40	30,4	26,12	17	26	15	59,04	0,800	243,88	€
SSTB2.5-15-RA	2.5	15	12	30	37,5	44,18	75	38,41	19,86	17,5	37	20	20,51	0,190	90,28	€
SSTB2.5-45-RA		45	15	60	112,5	113,43	50	38,35	32,65	22	35	20	72,84	1,360	406,27	€

Dimensions in mm

Our other products



ASM

Cylindrical polymer bush, Food grade polymer



CHAPAM

Weld-on hinge with flat end, Steel



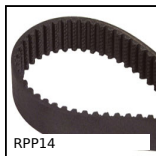
INS

Self tapping steel insert, Steel



GSI_A

Gas control screw for gas spring, Gas control screw



RPP14

RPP heavy duty timing belt, RPP14



ESCON

Speed controller 5A accessories, USB cable for PC link



SCA

Flat cable clamp, Steel



PTA100

Articulated levelling foot, pressed base Ø100, Ø 100



BOXKU

Boxed set of half round (Woodruff) keys



BABS303

303 Stainless steel compact ball pin,



HLA24

Right angle spiro bevel gearbox, Up to



BAP25

Plastic clamping collar, Ø25 - Ø40

Complementary products



ZHBRA

Plastic bevel gear, 1,25:1 2:1 3:1



ZBRA

Machined plastic bevel gear, 1:1