

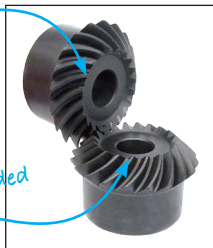
Ratio 1:1

Hardened steel

- **Module 1 to 3**
- Helical angle 35°
- Pitch angle 45°
- Face angle:
 - 20 teeth = 49°12'
 - 25 teeth = 48°22'
 - 30 teeth = 47°48'
- Pressure angle 20°
- Two gears are needed to make a pair, one angled to the right (R), the other to the left (L)
- **This pair must be used together**
- Material: steel S45C
- Teeth surfaces are induction hardened

L = left-handed inclination

R = right-handed inclination



Option

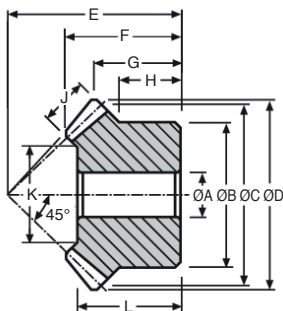
- We are unable to modify these parts

DISCOUNTS

Qty	1+	2+	4+
Disc.	List	-12%	On request

Part number	Teeth													Weight	
	Module	Z	ØA	ØB	ØC	ØD	E	F	G	H	J	K	L	(kg)	Price each
SMS1-20R	1	20	6	16	20,0	21,30	20	13,84	10,65	8	5	9,86	12	0,02	51,57 €
SMS1-20L															51,57 €
SMS1-25R	1	25	6	20	25,0	26,22	23	15,08	11,11	8	6	15,03	14	0,05	58,06 €
SMS1-25L															58,06 €
SMS1-30R	1	30	8	24	30,0	31,26	28	17,61	13,63	10	6	19,03	16	0,05	68,88 €
SMS1-30L															68,88 €
SMS1,5-20R	1,5	20	8	26	30,0	31,74	30	21,18	15,87	13	8	15,37	19	0,07	58,79 €
SMS1,5-20L															58,79 €
SMS1,5-25R	1,5	25	10	30	37,5	39,30	34	22,14	16,15	11,5	9	19,54	19	0,12	72,51 €
SMS1,5-25L															72,51 €
SMS1,5-30R	1,5	30	10	36	45,0	46,84	43	28,11	21,42	16	10	25,72	25	0,20	86,63 €
SMS1,5-30L															86,63 €

Dimensions in mm



DISCOUNTS

Qty	1+	2+	4+
Disc.	List	-12%	On request

Part number	Teeth												Weight (kg)	Price each	
	Module	Z	ØA	ØB	ØC	ØD	E	F	G	H	J	K			L
SMS2-20R	2	20	12	34	40,0	42,4	37	24,75	18,2	14	10	21,72	22	0,15	73,60 €
SMS2-20L															73,60 €
SMS2-25R	2	25	12	40	50,0	52,38	40	24,20	16,19	10	12	26,06	20	0,20	86,63 €
SMS2-25L															86,63 €
SMS2-30R	2	30	12	45	60,0	62,42	50	29,27	21,21	12,5	12	36,06	25	0,37	140,81 €
SMS12-30L															140,81 €
SMS2,5-20R	2,5	20	14	42	50,0	52,94	48	32,42	24,47	19	12	28,06	29	0,30	123,43 €
SMS2,5-20L															123,43 €
SMS2,5-25R	2,5	25	16	50	62,5	65,54	50	30,24	20,27	12,5	15	34,57	26	0,40	154,56 €
SMS2,5-25L															154,56 €
SMS2,5-30R	2,5	30	16	60	75,0	78,04	62	36,08	26,02	17	15	47,57	32	0,77	189,61 €
SMS2,5-30L															189,61 €
SMS3-20R	3	20	16	50	60,0	63,72	58	39,60	29,86	23	15	31,57	35	0,50	151,29 €
SMS3-20L															151,29 €
SMS3-25R	3	25	20	60	75,0	78,77	60	37,57	24,39	15	20	37,43	32	0,70	194,28 €
SMS3-25L															194,28 €
SMS3-30R	3	30	20	70	90,0	93,61	75	45,25	31,80	20	20	53,43	40	1,30	252,82 €
SMS3-30L															252,82 €

Dimensions in mm

Our other products



Linear bearing, Light



Numerical counter accessories, Operating knob



H Type Guide units, For Ø12 and Ø16 actuators



Multifunction display, Mounting bracket for front mounting



Storage bin, 8mm



Stainless steel indexing plunger, Stainless steel



Pull handle, Up to 250 °C



Surface mounting plate, Surface mounting plate for ball joint



Joining plate for aluminium profile, Joint plate - 45x90



Synchronous AC Motor and- gearbox , from 1.3 to 6Nm



Dual-thread screw wood/metal, Steel



Reducing sleeve male/female, Hexagonal - steel

Complementary products