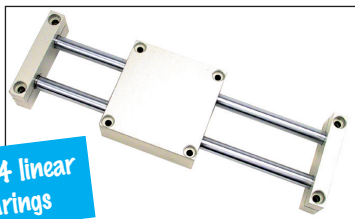
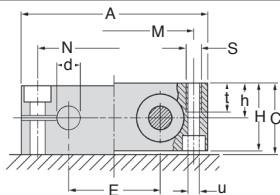
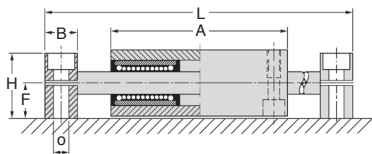


- Shafts supported at the ends
- This linear table comprises 2 h6 tolerated shafts, 2 shaft supports, 4 KBWW precision bearings and a sliding plate
- Materials:
Plate + end supports: Aluminium
Shafts + bearings: steel



With 4 linear bearings



DISCOUNTS

Qty	1+	2+
Disc.	List	On request

Part number	d	A	H	M screw centres on plate	E	h	u	S	t
SMLS-12	12	85	32	73	42	16,0	5,3	M60	13
SMLS-16	16	100	36	88	54	18,0	5,3	M60	13
SMLS-20	20	130	46	115	75	23,0	6,4	M80	18
SMLS-25	25	160	56	140	88	28,0	8,4	M10	22
SMLS-30	30	180	64	158	96	32,0	10,5	M12	26
SMLS-40	40	230	80	202	122	40,0	13,5	M16	34
SMLS-50	50	280	96	250	152	48,0	13,5	M18	34

Part number	C	F	o	B	End N screw centres	Length L (mm)	Stock*	Price each
SMLS-12	34	18,0	6,6	14	70	1000	✓	243,14 €
SMLS-16	38	20,0	9,0	18	82	1000	✓	292,52 €
SMLS-20	48	25,0	11,0	20	108	1000	✓	368,03 €
SMLS-25	58	30,0	13,5	25	132	1000	✓	521,60 €
SMLS-30	67	35,0	13,5	25	150	1000	-	747,32 €
SMLS-40	84	44,0	17,5	30	190	1000	-	1 158,38 €
SMLS-50	100	52,0	17,5	30	240	1000	-	On request

*Depending on availability - Dimensions in mm

Our other products



PW_PWG3
Worm - precision range, Steel



TBEBASE
Base plate for economic mini-table, Allows X-Y cross tables



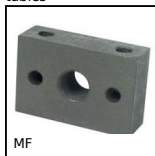
HLU
Spoked handwheel without handle, Aluminium



TAC_SS
Stainless steel rigging screw (hook/eye), Stainless steel



PM3
Worm and wheel set, Bronze



MF
Shock Absorber - universal flange, Universal fixing



BEK
Bearing housing for miniature ballscrew, Bearing housing



PPG
Indexing plunger with flange, With horizontal mounting flange



BFA
Shaft locking washer, E clip



BLHB20
Right angled gearbox, bored shafts, up to 20mm



M0
Worm and wheel set, Non hardened steel



RTE
Rotex®, jaw coupling, steel

Complementary products



BPQ
Quadro linear ball bearing unit, Included 4 linear ball bearings