

Toggle clamps

Round faced nut

SLH-M

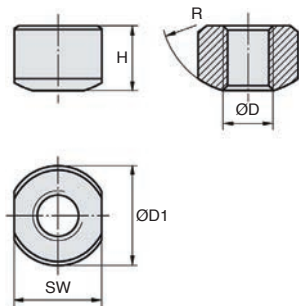
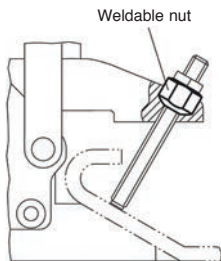
- Nut for toggle clamps

- Material : steel

- Finish : oxidised

Advantage

- Nut can be welded in place



DISCOUNTS

Qty	1+	6+	15+	20+
Disc.	List	-5%	-10%	On request

Part number	ØD	H	ØD1	SW	R	Price each 1 to 5
SLH-M4	M4	5,2	8	7	7	2,57 €
SLH-M5	M5	6,7	10	9	9	2,70 €
SLH-M6	M6	9,5	13,5	12,2	10	2,96 €
SLH-M8	M8	12,8	18	15,3	12	3,61 €
SLH-M10	M10	12,1	20	18,2	14	3,87 €
SLH-M12	M12	14,8	23	20	16	4,20 €

Dimensions in mm

Our other products



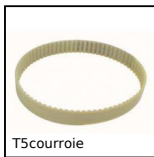
RDERSS
Stainless steel manual rigging screw, Stainless steel - manual



BH02
Single housed bearing assembly, Bearing secured with circlips



SSG1_304L
Stainless steel spur gear, Stainless steel 304L



T5courroie
T type timing belt, T5 Steel cored polyurethane



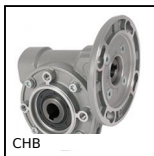
Q4
Double row radial contact ball bearing, Radial contact - Steel



T5P_T10P
Connecting plate for T type timing belts, T5



PTA100
Articulated levelling foot, pressed base Ø100, Ø 100



CHB
Worm and wheel gear reducer, up to 41 Nm



COA-COG
Surface mounting plate, Surface mounting plate for



DIA
Ring operated locking bolt, with ring

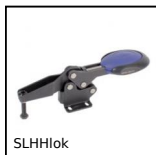


RAS
90°ball and socket joints DIN71802, Steel



BDMdll
Magnetic bush for pin, Fast and light magnetic locking

Complementary products



SLHHlok
Horizontal toggle clamp, Horizontal toggle clamp / horizontal foot



SLHVlok
Horizontal toggle clamp, Horizontal toggle clamp / vertical foot