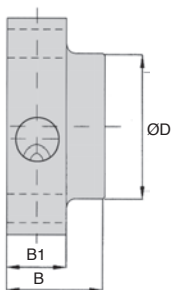
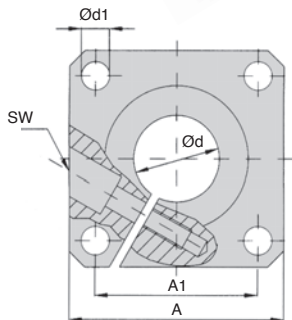
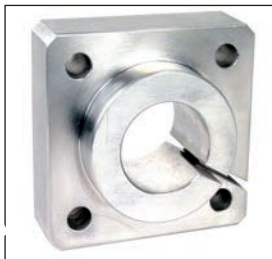


- For linear guide shaft
- End support bracket
- Material: Aluminium
- Adjustable backlash
- Mounting holes conform to DIN912 8.8



### DISCOUNTS

Qty	1+	5+	10+	25+
Disc.	List	-5%	-10%	On request

Part number	Ød	A	B	ØD	A1	Ød1	B1	SW	Weight (kg)	Stock*	Price each 1 to 4
SFWR-12	12	40	20	23,5	30 <sup>+0,12</sup>	5,5	12	M3	0,05	✓	50,59 €
SFWR-16	16	50	20	27,5	35 <sup>+0,12</sup>	5,5	12	M3	0,08	✓	57,54 €
SFWR-20	20	50	23	33,5	38 <sup>+0,15</sup>	6,6	14	M4	0,10	✓	64,49 €
SFWR-25	25	60	25	42,0	42 <sup>+0,15</sup>	6,6	16	M5	0,15	✓	73,44 €
SFWR-30	30	70	30	49,5	54 <sup>+0,25</sup>	9,0	19	M6	0,24	✓	94,28 €
SFWR-40	40	100	40	65,0	68 <sup>+0,25</sup>	11,0	26	M8	0,66	✓	114,14 €
SFWR-50	50	100	50	75,0	75 <sup>+0,25</sup>	11,0	36	M8	0,82	-	154,46 €

\*Depending on availability - Dimensions in mm

## Our other products



MLY

Bow shackle with eye bolt, Steel



EPE

Wing nuts Hygienic Design®, Narrow



HRV

V-rail guidance Simple Select® system, Rail with carriage



RHTtcss

High Temperature Castor, up to 200kg



SHA

Handwheel without handle, Polyamide



PSPD18

Flexible tube handle, Black PVC



CFE

Female rod ends DIN ISO12240-4, Steel / bronze



D19 D29

Compression springs in metre length stainless steel, by the metre



DPAR\_DKON

Conical elasto buffer, Steel



SH3

Parallel axis helical gear, Steel 20NCD2



PTRSS

Idle chain sprocket, For hostile



LRR

Catch-plate for latch, Catch-plate

## Complementary products



ZA

Shaft for linear guides, Hardened ground steel



ZB

Shaft for linear guides, Hardened ground stainless steel



ZA

Shaft for linear guides, Hardened ground steel



AWMP

Aluminium shaft for linear guide, Aluminium