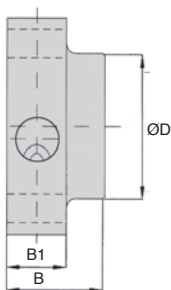
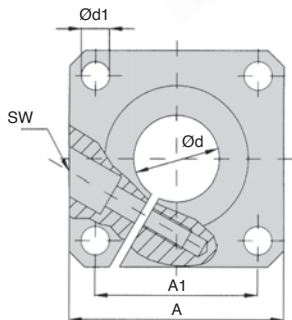


- For linear guide shaft
- End support bracket
- Material: Aluminium
- Adjustable backlash
- Mounting holes conform to DIN912 8.8



DISCOUNTS

Qty	1+	5+	10+	25+
Disc.	List	-5%	-10%	On request

Part number	Ød	A	B	ØD	A1	Ød1	B1	SW	Weight (kg)	Stock*	Price each 1 to 4
SFWR-12	12	40	20	23,5	30 ^{+0,12}	5,5	12	M3	0,05	✓	50,59 €
SFWR-16	16	50	20	27,5	35 ^{+0,12}	5,5	12	M3	0,08	✓	57,54 €
SFWR-20	20	50	23	33,5	38 ^{+0,15}	6,6	14	M4	0,10	✓	64,49 €
SFWR-25	25	60	25	42,0	42 ^{+0,15}	6,6	16	M5	0,15	✓	73,44 €
SFWR-30	30	70	30	49,5	54 ^{+0,25}	9,0	19	M6	0,24	✓	94,28 €
SFWR-40	40	100	40	65,0	68 ^{+0,25}	11,0	26	M8	0,66	✓	114,14 €
SFWR-50	50	100	50	75,0	75 ^{+0,25}	11,0	36	M8	0,82	-	154,46 €

*Depending on availability - Dimensions in mm

Our other products



YG0

HEAVY DUTY spur gear, Steel 35NCD6



PNA

PERIFLEX® elastic coupling, Complete coupling



PCS375S

Chain sprocket - Stainless steel, 9.525 (DIN 06B-1)



BLH50

Right angled gearbox, from 7.70 to 20 Nm



ACLLPP

Latch for aluminium profile, Spring operated latch



NCT_AT

Variable angle connector, Variable angle



T5P_T10P

Connecting plate for T type timing belts, T10



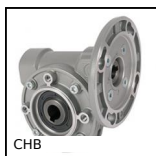
PLM-C

Cylindrical holding magnets, Cylindrical holding magnet



CHA1056-UPA

Molded polyamide face-mounted hinge, Black polyamide



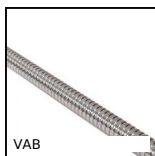
CHB

Worm and wheel gear reducer, up to 41 Nm



DOMI_MD

Domino rotary table, 40/1



VAB

Ballscrew, supplied by the metre, Rolled ballscrew, per metre

Complementary products



ZA

Shaft for linear guides, Hardened ground steel



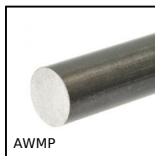
ZB

Shaft for linear guides, Hardened ground stainless steel



ZA

Shaft for linear guides, Hardened ground steel



AWMP

Aluminium shaft for linear guide, Aluminium