

Cam latch

Hole 8x8

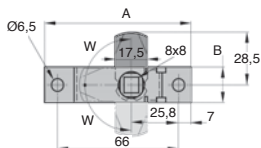
SERB

- Latch with 3 indexed positions

- Material:

304 stainless steel

Natural finish



Latch and key



DISCOUNTS

Qty	1+	6+	20+	50+
Disc.	List -5%	-10%	On request	On request

Part number	A	B	C	W	Weight (g)	Price each 1 to 5
SERB80-19/SS	80	19	8	90°	20	20,00 €

Dimensions in mm

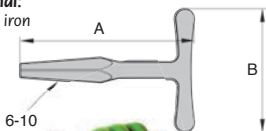
Universal latch key

For SERB80-19/SS cam latch

SERB

- Material:

Cast iron



DISCOUNTS

Qty	1+	6+	20+	50+
Disc.	List -5%	-10%	On request	On request

Part number	A	B	Weight (g)	Price each 1 to 5
SERB-CLE	90	63,5	58	2,98 €

Dimensions in mm

Our other products



VTLM

3 lobed handle,
Polyamide - Steel



RAG

Roller track,



PDD

Spring operated
plunger, Non-rotating
detector shaft



MC

Shock Absorber, Self-
compensating -
without adjustment



DHX

Dowel pin, Extractable
DIN 7979D



NT61

Spur gear coaxial
gearbox, from 5 to 14
Nm - Inline



BFDdII

Locking pin for
bushes, Nickel-plated
steel



GET-AL

Elastic coupling,
economy range,
Aluminium



SKM

Trapezoidal nut, Steel
- 1 thread



PXHG25

Crossed helical gear -
precision range,
35NCD6 Pre-hardened



NCT

Square tube
connector, Fixed
angle



S_ZZ

Ball bearing, Stainless
steel

Complementary products



SERB

Latch, Cam latch