

Cam latch

Hole 8x8

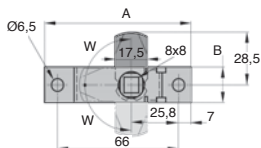
SERB

- Latch with 3 indexed positions

- Material:

304 stainless steel

Natural finish



Latch and key



DISCOUNTS

Qty	1+	6+	20+	50+
Disc.	List -5%	-10%	On request	On request

Part number	A	B	C	W	Weight (g)	Price each 1 to 5
SERB80-19/SS	80	19	8	90°	20	20,00 €

Dimensions in mm

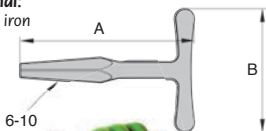
Universal latch key

For SERB80-19/SS cam latch

SERB

- Material:

Cast iron



DISCOUNTS

Qty	1+	6+	20+	50+
Disc.	List -5%	-10%	On request	On request

Part number	A	B	Weight (g)	Price each 1 to 5
SERB-CLE	90	63,5	58	2,98 €

Dimensions in mm

Our other products



J52
Spur gear coaxial gearbox, from 0.27 to 0.90 Nm - In-line



BVR
Adjustable screw stop, Steel



VTA
Vari-Tork® slip friction clutch, 0.53 to 1.32 Nm



BLHB30
Right angled gearbox, bored shafts, up to 4.47 Nm



PSG25
Spur gear - precision range, Case hardened steel 20NCD2



AT5M AT10M
AT type timing belt per metre, AT5 Steel cored polyurethane



SCA_SS
Stainless steel flat cable clamp, Stainless steel



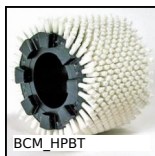
BS3
Panamech, Multi-Beam stainless steel, Stainless steel - with set screw



ACAs5
Stainless steel splined shaft, Stainless steel



SVR15
Screwjack with travelling nut, with



BCM_HPBT
Modular cylindrical brush, PBT polyester



BHEX
Hexagonal cap, Black technopolymer

Complementary products



SERB
Universal latch key, Universal latch key



SER69K
Quarter turn latch for the food industry, Stainless steel